

Waters Quality Parts and Supplies

Contents

Rely on Genuine Waters Quality Parts	531	HPLC Pumps	559
Performance Maintenance Kits – All the Parts You Need, in One Box.....	531	Gradient Modules	561
ACQUITY Premier.....	532	Fluid Handling Units.....	562
ACQUITY I-Class Plus	532	Injectors/Fraction Collectors.....	563
ACQUITY H-Class Plus.....	534	Detectors.....	566
ACQUITY H-Class Plus Bio	535	Quadrupole Time-of-Flight Mass Spectrometers	569
Arc Premier.....	536	Tandem Quadrupole Mass Spectrometers.....	571
ACQUITY Arc Bio	537	Atmospheric Solids Analysis Probe (ASAP).....	573
Arc HPLC	538	Tool Free Probes.....	574
ACQUITY Arc System.....	539	Single Quadrupole Mass Spectrometers	574
ACQUITY UPC2 System	540	Time-of-Flight (ToF) Mass Spectrometers.....	576
ACQUITY APC System	542	Magnetic Sector Mass Spectrometer	577
ACQUITY UPLC I-Class System	543	Column and Cartridge Fittings and Accessories.....	578
ACQUITY UPLC System	548	SLIPFREE Connectors.....	579
ACQUITY UPLC H-Class System	545	PEEK Tubing and Fittings.....	580
ACQUITY UPLC H-Class Bio System....	546	Filters.....	582
ACQUITY UPLC M-Class System	553		
nanoACQUITY UPLC System.....	554		
Alliance Separations Modules.....	556		
Common Parts for Alliance Systems...	558		

Waters Quality Parts and Supplies

Rely on Genuine Waters Quality Parts

Waters knows how to run chromatography and LC-MS laboratories at peak performance. Our instruments, software, chemistries, and services provide you the tools for success.

Only Waters Quality Parts™ are tested and certified for ensuring optimal performance of Waters systems. Fitting our component parts to your instruments instills confidence that they will operate in a dependable, invariable manner over time, that results will be accurate, precise, and reproducible, and that systems will remain compliant.

Performance Maintenance Kits —All the Parts You Need, in One Box

Our Performance Maintenance (PM) kits meet the requirements of our instruments, providing a dependable, economical way to ensure proper maintenance. Each kit contains the parts necessary to keep an instrument operating at peak performance. You'll also find a sticker, for affixing to the instrument. On it you can document the performance of maintenance procedures and thus be reminded when they are once again due.

Performance maintenance protocols for Waters instruments can be obtained from our support library on **waters.com**. The protocols include details of maintenance tasks and may also include calibration and diagnostic tests, to ensure the instruments function correctly.

Ordering is Easy, Online or by Phone

Our local Waters sales office can quote prices, in any currency, for PM Kits and Waters Quality Parts. In the United States and Canada, you can obtain pricing by phone at 1-800-252-4752. If you are located elsewhere, you can consult the inside back cover of this catalog, which lists our worldwide sales offices and contact information. Finally, if you're a registered user of the Waters website, you can obtain local-currency prices at **waters.com/order**.

To Find Parts: Use Our Waters Quality Parts Locator

Visit Waters online at waters.com/partslocator to use the Waters Quality Parts Locator to browse Waters systems, identify replacement components, and make purchases.

The Quality Parts Locator provides access to far more items than those that appear in this catalog. It also offers troubleshooting information, by our technical experts, to help you determine how best to correct problems.



i The online Waters Quality Parts Locator provides a simple way to find the component parts you need. You move the cursor over depictions of instruments, click on assemblies, and then click on component parts.

ACQUITY Premier



ACQUITY Premier System.

Ordering information

NEW ACQUITY Premier BSM

Description	P/N
ACQUITY Premier BSM Performance Maintenance Kit	201000328
PM Kit consists of: Check Valves, Mixers, Filters, Plungers & Seals	

NEW ACQUITY Premier QSM

Description	P/N
ACQUITY Premier QSM Performance Maintenance Kit	201000244
PM Kit consists of: Check Valves, Mixers, Filters, Plungers & Seals	

NEW ACQUITY Premier SM-FTN

Description	P/N
ACQUITY Premier Sample Manager-FTN Performance Maintenance Kit	201000334
PM Kit consists of: Syringe, 15 µL Textured Needle, Guide & Seat, Inject Valve Cartridge, and Filters	

ACQUITY I-Class Plus

Ordering information

ACQUITY I-Class PLUS Sample Manager-FTN

Description	P/N
ACQUITY I-Class PLUS Sample Manager-FTN Performance Maintenance Kit	201000316
PM Kit consists of: Syringe, 15 µL Textured Needle, Guide & Seat, Inject Valve Cartridge, and Filters	

Parts and Accessories	
Inject Valve Cartridge	700006057
Air Filter, Side Panel	401000694
Guide, Sample Needle	405008854
Seat, Vespel with Anti-rot	405011492
Syringe, 100 µL, HP	700002570
Assy, Seat Port, .003 I.D.	700006056
Assy Textured Needle 15 µL with Guide and Seat	700011628
Assy, Tube, Out, Wash Pump	430002345
Assy, Tube, Feed, Injection Port	430002346
Assy, Tube, Feed, Syringe	430002347
Assy, Tube, Feed, Transducer	430002348
Assy, Tube, Feed, Injection Valve	430002349



ACQUITY I-Class Plus System.

Parts and Accessories	
Assy, Tube, Waste, EXT., Injection Valve	430002360
Assy, Tube, Waste, Injection Valve	700009534
Assy, Tube, Waste, Injection Valve	430002362
Tube Assy, Sample Manager Purge	430002462
Tube, ACQUITY UPLC I-Class to MS MP35N 17 in.	700008939
Tube, ACQUITY UPLC I-Class to MS PEEKsil 17 in.	700008940
Tube, ACQUITY UPLC I-Class to MS PEEK 17 in.	700008941
Tube, ACQUITY UPLC I-Class to MS PEEK 21 in.	700008942
Tube, ACQUITY UPLC I-Class to MS PEEKsil 21 in.	700008943
Tube, ACQUITY UPLC I-Class to MS PEEKsil. 003 × 21 in.	700008944
ACQ. I-Class PDA Tubing Single Detector	700011803
ACQ. I-Class TUV Tubing Single Detector	700011804

ACQUITY I-Class PLUS Sample Manager-FL

Description	P/N
ACQUITY I-Class PLUS Sample Manager-FL Performance Maintenance Kit	201000258
PM Kit consists of: Syringes, Std 10 µL PEEK Needle, Injection Cartridge, 10 µL Loop and Filters	
Parts and Accessories	
Inject Valve Cartridge	700006069
Syringe, 100 µL, HP	700002570
Syringe, 2.5 mL, Inverted	700006070
Assy, Sample Loop, EXT. Hypo Tip, 5 µL	430002936
Assy, Sample Loop, Hypo Tip, 10 µL	430002938
Assy, Sample Loop, EXT. Hypo Tip, 1 µL	430003166
Assy, Sample Loop, EXT. Hypo Tip, 2 µL	430002928
Assy, Tube, SSV/P-3 to Transducer	430002558
Assy, Tube, SSV P-2 to VM/SSV	430002560
Assy, Tube, WS1 to VM/S-SY	430002564
Assy, Tube, WS2 to VM/W-SY	430002566
Assy, Tube, WS to VM/W-In.	430002568
Assy, Tube, SS to VM/S-In.	430002571
Assy, Tube, NCS Inlet	430002579
Tube, NCS, Puncture Needle to Elbow	430003159
Port, Seal, Needle Wash	700002886
Assy, Puncture Needle, .059 O.D.	700006067
Kit, I-Class FEP/Metal Needle, 10 µL	700005925
Kit, I-Class PEEKsil Needle 10 µL	700005926
Kit, I-Class FEP/Metal Needle, 20 µL	700005929
Kit, I-Class ACQUITY UPLC PEEKsil Needle	700005930
Kit, I-Class PEEK Needle, 10 µL	700005923

ACQUITY I-Class PLUS BSM

Description	P/N
ACQUITY I-Class BSM Performance Maintenance Kit	201000260
PM Kit consists of: Plungers, Check Valves, Seals, and Filters	
Parts and Accessories	
Primary Inlet Check Valve Filter Kit, 2/pk	700002912
HP Seal, Dual Spring, Perform Seal, 2/pk	700009135
Plunger Assy, 2/pk	700002600
Assy, Housing, Seal Wash, .045, SST, 2PT	700009194
Assy, Cartridge, Filter, SS Frit	700002913
Marker Set, Tubing, ACQUITY, 2/pk	700003102
Filter, Solvent Bottle, SS, 7/pk	700003616
Seal, Wash, .0787 I.D., Fixed, 2/pk	700006048
Kit, Check Valve, Dual Ball and Seat, 2/pk	700003755
Assy, Cart, Vent, Dogleg, 18 K psi, Dome	700006052
Pump Head, 316 SS, DLC, Face Seal	700009190
Support Plant, Thickened, VHP, Head	700002601
Assy, Tube, Degasser Port B2 to SSV B	430001113
Assy, Tube, Degasser Port B1 to SSV B	430001114
Assy, Tube, Degasser Port A1 to SSV A	430001115
Assy, Tube, Degasser Port A2 to SSV A	430001116
Assy, Tube, Accu. "B" Xducer—Vent Valve	430001199
Assy, Tube, Accu. "A" Xducer—Vent Valve	430001200
Assy, Tube, Vent Valve P5 to Tee/Filter	430001207
Assy, Tube, Vent Valve P2 to Tee/Filter	430001208
Assy, Tube, SSV to i2V	430001443
Assy, Tube, Vent Valve P1 to Waste	430001893
Assy, Tube, Vent Valve P4 to Waste	430001894
Assy, Tube, Head to Xducer, MP35N	430002472
Assy, Tube, Prim-out Xducer to CV, MP35N	430002583
Tube Assy, Solvent Inlet, BSM-CR	430002800

ACQUITY I-Class PLUS CM-A

Parts and Accessories	P/N
ACQUITY I-Class PLUS APH, SS, 12.5 LG	205001757
Kit, ACQ. UPLC I-Class PLUS CM-A Tubing 2 Col	205001826
9-port Valve Cartridge Assembly	700008871

DID YOU KNOW...

To ensure the maximum performance and longevity of your ACQUITY UPLC System, it is critical that you use Waters Quality Parts for maintenance.

ACQUITY H-Class Plus

Ordering information

ACQUITY H-Class PLUS Sample Manager-FTN

Description	P/N
ACQUITY H-Class PLUS Sample Manager-FTN Performance Maintenance Kit	201000314
PM Kit consists of: Syringe, 15 µL Textured Needle, Guide & Seat, Inject Valve Cartridge, Seat Port Assy and Filters	
Parts and Accessories	
Inject Valve Cartridge	700005236
Air Filter, Side Panel	401000694
Guide, Sample Needle	405008854
Seat, Vespel with Anti-rot	405011492
Syringe, 100 µL, HP	700002570
Assy, Seat Port, .004 I.D.	700005234
Assy Textured Needle 15 µL with Guide and Seat	700011628
Assy, Tube, Out, Wash Pump	430002345
Assy, Tube, Feed, Injection Port	430002346
Assy, Tube, Feed, Syringe	430002347
Assy, Tube, Feed, Transducer	430002348
Assy, Tube, Feed, Injection Valve	430002349
Assy, Tube, Waste, EXT., Injection Valve	430002360
Assy, Tube, Waste, Injection Valve	430002362
Tube Assy, Sample Manager Purge	430002462
Tube Assy, Sample Manager Purge, Bio	430002464
Tube Assy, Sample Manager Wash, Bio	430002487



ACQUITY H-Class Plus System.

ACQUITY H-Class PLUS Binary Solvent Manager

Description	P/N
ACQUITY H-Class PLUS BSM Performance Maintenance Kit	201000260
PM Kit consists of: Plungers, Check Valves, Seals, and Filters	
Parts and Accessories	
Primary Inlet Check Valve Filter Kit, 2/pk	700002912
HP Seal, Dual Spring, Perform Seal, 2/pk	700009135
Plunger Assy, 2/pk	700002600
Assy, Housing, Seal Wash, .045, SST, 2PT	700009194
Assy, Cartridge, Filter, SS Frit	700002913
Marker Set, Tubing, ACQUITY, 2/pk	700003102
Filter, Solvent Bottle, SS, 7/pk	700003616
Seal, Wash, .0787 I.D., Fixed, 2/pk	700006048
Kit, Check Valve, Dual Ball and Seat, 2/pk	700003755
Assy, Cart, Vent, Dogleg, 18 K psi, Dome	700006052
Pump Head, 316 SS, DLC, Face Seal	700009190
Support Plant, Thickened, VHP, Head	700002601
Assy, Tube, Degasser Port B2 to SSV B	430001113
Assy, Tube, Degasser Port B1 to SSV B	430001114
Assy, Tube, Degasser Port A1 to SSV A	430001115
Assy, Tube, Degasser Port A2 to SSV A	430001116
Assy, Tube, Accu. "B" Xducer—Vent Valve	430001199
Assy, Tube, Accu. "A" Xducer—Vent Valve	430001200
Assy, Tube, Vent Valve P5 to Tee/Filter	430001207
Assy, Tube, Vent Valve P2 to Tee/Filter	430001208
Assy, Tube, SSV to i2V	430001443
Assy, Tube, Vent Valve P1 to Waste	430001893
Assy, Tube, Vent Valve P4 to Waste	430001894
Assy, Tube, Head to Xducer, MP35N	430002472
Assy, Tube, Prim-out Xducer to CV, MP35N	430002583
Tube Assy, Solvent Inlet, BSM-CR	430002800

ACQUITY H-Class PLUS Quaternary Solvent Manager

Description	P/N
ACQUITY H-Class Quaternary Solvent Manager Performance Maintenance Kit	201000233
PM Kit consists of: Mixer, Plungers, Check Valves, Seals, and Filters	
Parts and Accessories	
Seal Wash Housing Seal, 2/pk	700002598
Head Plunger Seal, 2/pk	700002599
Plunger, 2/pk	700002600
Head Support Plate	700002601
Vent Valve Cartridge Assembly	700002660
Check Valve, Double Ball and Seat, 1/pk	700005164
i2 V Valve Cartridge, 1/pk	700005165
Filter, Air, Door	700005167
Filter for GPV, 4/pk	700005173
Assy, Mixer, 100 µL, QSM	700005119
O-ring, Teflon, Pump Head	WAT076152
Pump Head	700002595
Seal Wash Housing	700002597
Tube Assembly, Degasser to GPV	430002208
Tube Assembly, Transducer to Vent Valve	430002316
Tube Assembly, Vent Valve P4 to Waste	430002317
Tube Assembly, Vent Valve P2 to Outlet Filter	430002319
Tube Assembly, Transducer to Check Valve	430002357
Tube Assembly, GPV-D to Mixer Manifold	430002387
Tube Assembly, GPV-C to Mixer Manifold	430002388
Tube Assembly, GPV-A to Mixer Manifold	430002389
Tube Assembly, GPV-B to Mixer Manifold	430002390
Tube Assembly, Mixer Manifold to i2 V	430002400

ACQUITY H-Class PLUS CM-A

Parts and Accessories	P/N
ACQUITY H-Class PLUS APH, SS, 12.5 LG	205001774
Kit, ACQ. UPLC H-Class PLUS CM-A Tubing 2 Col	205001819
Kit, ACQ. UPLC H-Class PLUS CM-A Tubing 4 Col	205001821
ACQUITY H-Class PLUS APH, SS, 18.5 LG	205001758
Kit, ACQUITY UPLC 4 × 50 mm CM-A	205001832
Kit, ACQ. UPLC H-Class PLUS CM-A Tubing 6 Col	205001822
9-port Valve Cartridge Assembly	700005438

ACQUITY H-Class Plus Bio



ACQUITY H-Class Plus Bio System.

Ordering information

ACQUITY H-Class PLUS Bio Sample Manager-FTN

Description	P/N
ACQUITY H-Class PLUS Bio Sample Manager-FTN Performance Maintenance Kit	201000315
PM Kit consists of: Syringe, 15 µL Textured Needle, Guide & Seat, Inject Valve Cartridge, Seat Port Assy and Filters	
Parts and Accessories	
Inject Valve Cartridge	700005407
Air Filter, Side Panel	401000694
Guide, Sample Needle	405008854
Seat, Vespel with Anti-rot	405011492
Syringe, 100 µL, HP	700002570
Assy, Seat Port, .004 I.D.	700005682
Assy Textured Needle 15 µL with Guide and Seat	700011658
Assy, Tube, Out, Wash Pump	430002345
Assy, Tube, Feed, Injection Port	430002346
Assy, Tube, Feed, Syringe	430002347
Assy, Tube, Feed, Transducer	430002348
Assy, Tube, Feed, Injection Valve	430002349
Assy, Tube, Waste, EXT., Injection Valve	430002360
Assy, Tube, Waste, Injection Valve	430002362
Tube Assy, Sample Manager Purge, Bio	430002464
Tube Assy, Sample Manager Wash, Bio	430002487

ACQUITY H-Class PLUS Bio Quaternary Solvent Manager

Description	P/N
ACQUITY H-Class PLUS Bio QSM Performance Maintenance Kit	201000244
PM Kit consists of: Mixer, Plungers, Check Valves, Seals, and Filters	
Parts and Accessories	
Pump Head, ACQUITY, Titanium	700005411
Plunger, .0787 Diameter x 1.415, 2/pk	700002600
Assy, Mixer, 100 µL, BioQSM	700005258
Fitting and Lock Ring, GPV Filter, 4/pk	700005259
Solvent Filter, Titanium, 7/pk	700005378
Cartridge, i2V, BioACQUITY	700005414
Check Valve, Accumulator, Ti	700005415
HP Seal, .0787 I.D., Flanged, Bio	700005418
Holder, 20 Micron Frit, Titanium, 4/pk	700005419
Wash Seal, .0787 I.D., Flanged, Bio	700005422
Ferrule, Flangeless, Tefzel, Lock Ring	700003796
Ferrule, Lock Ring and Screws, Flangeless, 7/pk	700003797
Filter, Air, Door	700005167
Cartridge, Vent Valve, BioQSM	700005413
Parts and Accessories	
Barbed Seal Wash Housing, Titanium	700005410
Tube Assy, Solvent Inlet, BioQSM	430002274
Assy, Tube, Vent Valve P4 to Waste, QSM	430002317
Assy, Tube, Head to Xducer, MP35N	430002472
Assy, Tube, Degasser to GPV, MP35N	430002474
Assy, Tube, Xducer to Check Valve, MP35N	430002475
Assy, Tube, Xducer to Vent Valve, MP35N	430002476
Assy, Tube, Vent VLV P2 to Filter, MP35N	430002477
Assy, Tube, Mixer Manifold to i2V, MP35N	430002479
Assy, Tube, GPV-A to Mixer, MP35N	430002481
Assy, Tube, GPV-B to Mixer, MP35N	430002482
Assy, Tube, GPV-C to Mixer, MP35N	430002483
Assy, Tube, GPV-D to Mixer, MP35N	430002484
Support Plant, Thickened, VHP, Head	700002601

ACQUITY H-Class PLUS Bio CM-A

Parts and Accessories	P/N
ACQUITY H-Class PLUS APH, MP35N, 12.5 LG	205001754
Kit, ACQ. UPLC H-Class PLUS Bio CM-A Tubing 2 Col	205001823
Kit, ACQ. UPLC H-Class PLUS Bio CM-A Tubing 4 Col	205001824
ACQUITY H-Class PLUS APH, MP35N, 18.5 LG	205001755
Kit, ACQUITY UPLC 4 x 50 mm CM-A	205001830
Kit, ACQ. UPLC H-Class PLUS CM-A Tubing 6 Col	205001825
9-port Valve Cartridge Assembly	700005461

Arc Premier



Arc Premier System.

Ordering information

NEW Arc Premier BSM

Description	P/N
Arc Premier BSM Performance Maintenance Kit	201000336
PM Kit consists of: Check Valves, Mixers, Filters, Plungers & Seals	

NEW Arc Premier QSM

Description	P/N
Arc Premier QSM Performance Maintenance Kit	201000338
PM Kit consists of: Check Valves, Mixers, Filters, Plungers & Seals	

NEW Arc Premier SM-FTN

Description	P/N
Arc Premier Sample Manager-FTN Performance Maintenance Kit	201000337
PM Kit consists of: 100 µl Syringe, 30 µL Textured Needle, Guide & Seat, Inject Valve Cartridge, and Filters	

ACQUITY Arc Bio

Ordering information

ACQUITY H-Class PLUS Binary Solvent Manager

Description	P/N
Arc Bio QSM Performance Maintenance Kit	201000311
PM Kit consists of: Check Valves, Mixers, Filters, Plungers & Seals	
Parts and Accessories	
Assy, Barbed Seal Wash Housing	700011660
Assy, Plunger, .125 Dia, 2/pk	700010661
Pump Head, Ti	700011661
Wash Seal, Dual Spring MP35N .125 I.D, 2/pk	700011663
Hi Pressure Seal, Dual Spring MP35N .125 I.D, 2/pk	700010662
O-Ring, 2-016, Teflon	WAT076152
Check Valve Accumulator, Ti, 1/pk	700005415
Check Valve Primary, Spring Loaded, 1/pk	700010642
PEEK washer	700005221
Assy, Mixer, 4.6 mm × 100 mm, Path 1	700011553
Assy, Mixer, 4.6 mm × 50 mm, Path 2	700011554
Assy, Cartridge, Dual Mixer Vent Valve	700011664
Assy, Cartridge, Inlet Filter, Ti	700011679
Assy, Solvent Filter, Thru Tube, Ti	700011675
Assy, Solvent Filter, Thru Tube, Ti 7/pk	700011676
Assy, Tube, GPV to PCV	700011677
Assy, Tube, Head to Transducer	700011668
Assy, Tube, Xducer - VV	700011689
Assy, Tube, Xducer - ACC	700011670
Tube Assy, Solvent Inlet	700011674
Tubing, .040 PEEK, GPV, 4/pk	700011680
Assy, Tube, VV P7 to Waste	700011681
Assy, Tube, VV P4 to 100 mm Mixer	700011671
Assy, Tube, VV P2 to 50 mm Mixer	700011672
Assy, Tube, Mixer to VV P1 Path 1	700011673

ACQUITY Arc BIO 2489, 2998

Description	P/N
ACQUITY PDA/TUV 2489/2998 Performance Maintenance Kit	201000281
PM Kit consists of: PerformancePLUS Lamp	
Parts and Accessories	
Arc Bio 2998 Flow Cell, Inert,	205001043
Arc Bio 2489 Flow Cell, Low Dispersion	205001731
Performance Plus HB Deuterium Lamp Assy	700009330



ACQUITY Arc Bio System.

ACQUITY Arc Bio FTN

Description	P/N
ACQUITY Arc SM FTN-R Performance Maintenance Kit	201000312
PM Kit consists of: 30 µL Needle Assembly, Guide & Seat, 100 µL Syringe, Injection Valve, Seat Port Assy and Filters	
Parts and Accessories	
Assy, Cart, Inject, Bio FTN, 18 K psi	700005407
Seat, Vespel with Anti-rot	405011492
Kit, Assy, Seat Port, MP35N, .007 I.D.	700011690
Assy, Needle, 15 µL, FTN	700005421
Guide, Sample Needle	405008854
Syringe, 100 µL, HP	700002570
Assy, Solvent Filter, Thru Tube, Ti	700011675
Air Filter, Side Panel	401000694

ACQUITY Arc Bio 30 CM Column Heater and Column Heater/Cooler

Description	P/N
Passive Pre-Heater Kit, .005	205001709
Passive Pre-Heater Kit, .007	205001726
Tube, MP35N, .062 × .005 × 10 L	700012304
Union, Titanium, V-V, .010" Thru	405011424
Tube, PEEK, .062 × .005 × 24	700010530
Tube, PEEK, .062 × .007 × 24	700010701

ACQUITY 30 CM Column Heater—Active

Description	P/N
ACQUITY UPLC APH, Bio, .005 I.D. 23.5 LG	205001727
ACQUITY UPLC APH, Bio, .007 I.D. 23.5 LG	205001728

Arc HPLC

Ordering information

Arc HPLC QSM

Description	P/N
Arc HPLC QSM Performance Maintenance Kit	201000346
PM Kit consists of: Check Valves, Filters, Plungers & Seals	
Parts and Accessories	
Assy, Plunger, .125 Dia, 2/pk	700010661
Wash Seal, Floating, .125 I.D., 2/pk	700009137
HP Seal, Flanged, .125 I.D., Thin Bur, 2/pk	700010663
O-Ring, 2-016, Teflon	WAT076152
Primary Check Valve, 1/pk	700010664
Assy, Check Valve, Double Ball and Seat, 1/pk	700005164
Washer, Check Valve, PEEK	700005221
Assy, Mixer, 4.6 mm × 100 mm, 200 μm	700011656
Assy, Cartridge, Dual Mixer Vent Valve	700010669
Assy, Filter, In-Line, SS Frit	700002912
Assy, Cartridge, Inline Filter, SS Frit	700002913
Assy, Solvent Filter, Bottle, 2/pk	700010196
Assy, Barbed Seal Wash Housing	700012760
Support Plate, Thickened, VHP Head	700002601
Pump Head, 9 K, Shallow Gland	700010662
Tubing, .040 PEEK, GPV, 4/pk	700010683
Assy, Tube, GPV to PCV	700010678
Assy, Tube, Head to Transducer	700010679
Assy, Tube, Xducer - VV	700010680
Assy, Tube, Xducer - ACC	700010681
Tube Assy, Solvent Inlet	700010682
Assy, Tube, VV P7 to Waste	700010684
Assy, Tube, VV P4-5 to Mixers	700010685
Assy, Tube, Mixer to VV P1 Path 1	700010687



Arc HPLC System.

Arc HPLC 2489, 2998

Description	P/N
ACQUITY PDA/TUV 2489/2998 Performance Maintenance Kit	201000281
PM Kit consists of: PerformancePLUS Lamp	
Parts and Accessories	
Arc HPLC 2998 Analytical Flow Cell	205001023
Arc HPLC 2489 Analytical Flow Cell	205001027
Performance Plus HB Deuterium Lamp Assy	700009330

Arc HPLC CH-A

Description	P/N
Active Pre-Heater 12.5 in.	205001002

Arc HPLC FTN

Description	P/N
Arc HPLC SM FTN-R Performance Maintenance Kit	201000345
PM Kit consists of: 30 μL Needle Assembly, Guide & Seat, 100 μL Syringe, Seat Port Assy and Filters	
Parts and Accessories	
Seat, Vespel with Anti-rot	405011492
Kit, Assy, Seat Port, SST, .007 I.D.	700010726
Assy, Needle, 30 μL, FTN	700005279
Guide, Sample Needle	405008854
Syringe, 100 μL, HP	700002570
Inject Valve Cartridge	700005236
Parts and Accessories	
Filter, Solvent Bottle, SS, 1/pk	700003615
Filter, Solvent Bottle, SS, 7/pk	700003616
Air Filter, Side Panel	401000694

ACQUITY Arc System

Ordering Information

ACQUITY Arc QSM-R

Description	P/N
Arc QSM Performance Maintenance Kit	201000303
Parts and Accessories	
Pump, Solenoid, Wash	700010657
Assy, Barbed Seal Wash Housing, SFC-BSM	700008999
Support Plate, Thickened, VHP Head	700002601
Assy, Plunger, .125 Dia, 2/pk	700010661
Pump Head, 9 K, Shallow Gland	700010662
Wash Seal, Floating, .125 I.D., 2/pk	700009137
HP Seal, Flanged, .125 I.D., Thin Bur, 2/pk	700010663
O-Ring, 2-016, Teflon	WAT076152
Primary Check Valve, 1/pk	700010664
Assy, Check Valve, Double Ball and Seat, 1/pk	700005164
Washer, Check Valve, PEEK	700005221
Assy, Mixer, 4.6 mm × 100 mm, 200 µm Path 1	700010589
Assy, Mixer, 4.6 mm × 30 mm, 200 µm Path 2	700010590
Assy, Cartridge, Dual Mixer Vent Valve	700010669
Assy, Filter, In-Line, SS Frit	700002912
Assy, Cartridge, Inline Filter, SS Frit	700002913
Assy, Solvent Filter, Bottle, 2/pk	700010196
Assy, Tube, GPV to PCV	700010678
Assy, Tube, Head to Transducer	700010679
Assy, Tube, Xducer - VV	700010680
Assy, Tube, Xducer - ACC	700010681
Tube Assy, Solvent Inlet	700010682
Tubing, .040 PEEK, GPV, 4/pk	700010683
Assy, Tube, VV P7 to Waste	700010684
Assy, Tube, VV P4-5 to Mixers	700010685
Assy, Tube, VV P2 to Mixer Path 2	700010686
Assy, Tube, Mixer to VV P1 Path 1	700010687

ACQUITY Arc FTN-R

Description	P/N
ACQUITY Arc SM FTN-R Performance Maintenance Kit	201000302
Parts and Accessories	
Assy, Cart, Inject, STR, FTN, 18 K psi	700006057
Seat, Vespel with Anti-rot	405011492
Kit, Assy, Seat Port, SST, .007 I.D.	700010726
Assy, Needle, 30 µL, FTN	700005279
Guide, Sample Needle	405008854
Syringe, 100 µL, HP	700002570
Filter, Solvent Bottle, SS, 1/pk	700003615
Filter, Solvent Bottle, SS, 7/pk	700003616
Air Filter, Side Panel	401000694



ACQUITY Arc System.

ACQUITY 30 CM Column Heater and Column Heater/Cooler

Description	P/N
Kit, ACQUITY Arc CM Column H/HC PPH, .005	205001484
Kit, ACQUITY Arc 30 CM Column H/HC PPH, .007	205001524
Tube, SST, .062 × .005 × 10 L	700010708
Tube, SST, .062 × .007 × 10 L, High Flow	700010540
Assy, Tube, SST, .005 I.D., Valve Inlet	700010694
Assy, Tube, SST, .005 I.D., Column Inlet	700010695
Assy, Tube, SST, .007 I.D., Valve Inlet	700010696
Assy, Tube, SST, .007 I.D., Column Inlet	700010697
Valve, 3 Column Switch, 8 Port, 9.5 K psi	700010692
Rebuild Kit, Rotor, 3 Col Switch VLV, 9.5 K	700010447
Assy, Restriction Tube	700001598
PEEK Comp. Screw, Ferr, with Lock Ring, 5/pk	700000991
Kit, Screw, Comp., Lock Ring, Knurled, 8/pk	700010011
Kit, Ferrule B/L PEEK, 1/16 Machined, 10/pk	700010009
Screw, Comp., 10-32, SS Gold Plated, Long, 10/pk	700002645
Ferrule, Set, .062, Two-piece, 10/pk	700002635
Union, SST, V-V, .010" Thru	700010702

ACQUITY 30 CM Column Heater—Active

Description	P/N
ACQUITY UPLC APH, SS .005 I.D. 23.5 LG	205001452
ACQUITY UPLC APH, SS .007 I.D. 23.5 LG	205001451
Assy, Tube, APH to Column, .005 I.D.	700010700
Assy, Tube, APH to Column, .007 I.D.	700010698
Tube, PEEK, .062 × .005 × 24	700010530
Tube, PEEK, .062 × .007 × 24	700010701
PEEK Comp. Screw, Ferr, with Lock Ring, 5/pk	700000991
Screw, Comp., Lock Ring, Hex, Captured	700010699
Kit, Ferrule B/L PEEK, 1/16 Mach, 10/pk	700010009
Screw, Comp., 10-32, SS Gold Plated, Long, 10/pk	700002645
Ferrule, Set, .062, Two-piece, 10/pk	700002635

ACQUITY DETECTORS FOR ACQUITY ARC SYSTEM

2489 UV/Vis Detector

Description	P/N
ACQUITY PDA/TUV 2489/2998 Performance Maintenance Kit	201000281
PM Kit consists of: PerformancePLUS Lamp	
Parts and Accessories	
Performance Plus HB Deuterium Lamp Assy	700009330
Low Dispersion Analytical Flow Cell for Arc 2489	205001553
Flow Cell Rebuild Kit	WAS081346

2998 PDA Detector

Description	P/N
Performance Plus HB Deuterium Lamp Assy	700009330
PM Kit consists of: PerformancePLUS Lamp	
Parts and Accessories	
ACQUITY PDA/TUV 2489/2998 Performance Maintenance Kit	201000281
Low Dispersion Analytical Flow Cell for Arc 2998	205001552

2414 RI Detector

Description	P/N
Valve, 2-way Solenoid	700002360
Assy, Pressure Relief, 1/4-28, 35 psi	700002361
Valve, 3-way Recycle	700002362
Tubing, Union to Relief Valve	700002363
Tubing, Union to Purge Valve	700002364
Tubing, 2-way to 3-way Valve	700002378

Common Tubing for Arc Detectors

Description	P/N
Tubing Convoluted	700010532
Tube Assy, PEEK, .062 × .005 × 17 in.	700010533
Tube Assy, PEEK, .062 × .005 × 24 in.	700010530
Tube Assy, PEEK, .062 × .020 × 60 in., Waste	700010531

2475 FLR Detector

Description	P/N
ACQUITY UPLC FLR Detector Performance Maintenance Kit	201000193
PM Kit consists of: Lamp Assy	
Parts and Accessories	
Low Dispersion Flow Cell for Arc 2475	205001554

ACQUITY UPC² System

Ordering Information



ACQUITY UPC² System.

ACQUITY UPC² BSM

Description	P/N
UPC ² BSM Performance Maintenance Kit	201000270
PM Kit consists of: Mixer, Plungers, Check Valves, Seals, and Filters	
Parts and Accessories	
Assy, Seal Wash Housing, B-Pump	700008999
Assy Plunger, SFC, 0.125 Diameter, 2/pk	700009000
Head, SFC	700009001
Assy, Tube, Head to Transducer, No Loop	430003165
Transducer Assy, SFC A-Pump, 15 K psi, Parylene Coated	700009006
Assy, Seal Wash, Copper, SFC A-Pump	700009007
Support Plate, SFC Head, A-Pump	700009008
Insulating Sleeve, SFC Head, 2/pk	700009009
Assy, 250 µL Mixer	700008909
Kit, Cover, Head Insulator UPC ² BSM	700009012
Bulkhead Actuator Insulation, SFC-BSM	415001943
Insulator, Actuator, Pre-chiller, SFC-BSM	415001945
Assy, Tube, SSV to i2 V, SFC	430003096
Assy, Tube, Degasser to SSV, SFC-BSM	430003104
Assy, Tube, Transducer to C-Valve, SFC-BSM	430003105
Assy Tube, Vent Valve P2 to Tee/Filter, SFC	430003108
Assy, Tube, Vent Valve P5 to Tee/Filter, SFC	430003109
Assy, Tube, Accu, CO ₂ Transducer, V-Valve	430003161
Assy Tube, Solvent Inlet, SFC-BSM	430003274
Assy Tube, Vent Valve P4 to Waste	430003277
Assy Tube, Vent Valve P1 to Waste	430003278
Head Seal	700009136
Head Support Plate (Pump B)	700002601
Screw Metric Skt Cap M3 × 16, 4/pk	700004023
Screw M5 × 25, 2/pk	700002478
Screw, Metric, Skt Cap M5 × 40, 138 K, 4/pk	700006049
Transducer Assy, Head Mounted	700002594
Wash Seal, 2/pk	700009137
Solvent Select Valve Cartridge	700005408
Union, 0.020 in. I.D. V-Detail	700002636
Tube, Degasser 2 to SSV 2	700003387
Tube, Degasser 3 to SSV 3	700003388
Tube, Degasser 4 to SSV 4	700003389
Air Filter, Side Panel, Fan Intake	401000813
Air Filter, Vista Pump	700002632
Connector Plug, 12-pin	700001539
ACQUITY UPC ² CO ₂ Connections Kit	205001006

ACQUITY UPC² SM-FL

Description	P/N
UPC ² SM-FL Performance Maintenance Kit	
PM Kit consists of: Syringes, Needle Assy, Injection Cartridge, 10 µL Loop, Tube Assys, and Filters	201000271
Parts and Accessories	
Injection Valve Cartridge	700009057
In-line Waste Valve	410003180
PEEK Sample Needle Kit, 10 µL	700009095
Needle Assy, 250 µm, PEEKsil	700005179
Syringe, 100 µL	700002570
Volume Detection Device	700009094
Wash Port Fitting, 1/4-28 PEEK	700005297
Sample Loop, 2 µL	430002928
Sample Loop, 5 µL	430002936
Sample Loop, 10 µL	430002938

ACQUITY UPC² Convergence Manager

Description	P/N
Convergence Manager Performance Maintenance Kit	
PM Kit consists of: Valve Cartridge, Pressure Regulator, and Filters	201000272
Parts and Accessories	
Tee, V-Detail, SFC	405013607
Assy Tube, Tee to Vent Valve, SFC	430003194
Assy, Cartridge, Static Regulator	700009459
Assy Tube, Transducer to ABPR	430003200
Assy, Filter, 20 µm, 19 mm	700009059
Tube, Convolved, 3/8 in. I.D., Cuffed End	430003142
Tube, Convolved, 1/4 in. I.D., Cuffed End	430003191
Assy Tube, Vent Valve Tee to ABPR	430003201
Welded Tube, SM P6 to CM P1	430003351
Welded Tube, SS 0.007 in. I.D. × 14.5 in.	430003211
Welded Tube, SM P5 to CM P4	430003350
Welded Tube, SS 0.007 in. I.D. × 26.0 in.	430003339
Welded Tube, SS 0.007 in. I.D. × 20.5 in.	430003341
Injection Cartridge	700009052
Air Filter	401000813

ACQUITY CM-A

Description	P/N
ACQUITY CM-A/CM-A Aux Performance Maintenance Kit	
PM Kit consists of: Filters	201000207
Parts and Accessories	
Kit, ACQUITY UPC ² , SST, .007 in. I.D. × 12.5 in.	205001002
Kit, ACQUITY UPC ² , SST, .007 in. I.D. × 18.5 in.	205001003
Kit, ACQUITY UPC ² , SST, .007 in. I.D. × 36.5 in.	205001004
Kit, ACQUITY UPC ² CM-A 6 Column Tubing	205001001
Kit, ACQUITY UPC ² CM-A 4 Column Tubing	205000999
Kit, ACQUITY UPC ² CM-A 2 Column Tubing	205000986
Valve Cartridge, Rotary Shear, SS	700005438

ACQUITY UPC² PDA Detector

Description	P/N
PDA/TUV Performance Maintenance Kit	
PM Kit consists of: PerformancePLUS Lamp	201000273
Parts and Accessories	
PerformancePLUS HB Deuterium Lamp Assembly	700005269
I/O Connector 6-pin	700005237
Ethernet Cable, Shielded CAT 5 Cross-over, 3 ft.	440000145
Ethernet Patch Cord, Shielded, 10 ft.	441000372
Fuse Holder	WAT055426
Back Pressure Regulator, 250 psi	700002676
ACQUITY UPC ² Analytical Flow Cell	205015037
Leak Sensor Assy	205000505

ACQUITY APC System

Ordering information

ACQUITY APC CM-S

Description	P/N
CM-S Performance Maintenance Kit	201000282
PM Kit consists of: Filters	
Parts and Accessories	
Kit, Tubing Configuration, No Vlvs, CM-S	205001166
Kit, 2-column Bank Connection, CM-S	205001169
Kit, 3-column Bank Connection, CM-S	205001171
Kit, 4-column Bank Connection, CM-S	205001172
Tubing, SS Bypass, .004 in. I.D.	430002725
Welded Tube Assy, SST, 44.0 LG, LP	430002772
Welded Tube Assy, SS, 19.0 LG	700005478
Welded Tube Assy, SS, 22.5 LG, LP	700005480
Welded Tube Assy, MP35N, 14.5 LG, LP	700005482
Latch Set, CM-A/CM-Aux Trough Cover, L&R	700005980
Assy, Cartridge, 9-port CM-S	700008871
Tube, .005 I.D., Col Conn, In-line	700009524
Tube, .004 I.D., Col Conn, Offset "U"	700009534
Tube, .004 I.D., Col Conn, "U"	700009535
Cover, Column Manager	700009538
Gasket, Trough Cover	700009539
Retainer Clip, CM-S Trough, APH	700009540
Gasket, Thin, APH, CM-S	700009541
Tube, .004 I.D., Col Conn, Long	700009560

ACQUITY APC SM-FTN

Description	P/N
ACQUITY APC SM-FTN Performance Maintenance Kit	201000285
PM Kit consists of: Syringe, Std Needle, Injection Cartridge and Filters	
Parts and Accessories	
Assy, Extension Loop, 250 µL	430002007
Assy, Extension Loop, 100 µL	430002011
Assy, Extension Loop, 50 µL	430002012
Cup, Overflow	700009505
Support Sleeve, Fountain Wash PPS	700009506
Guide, Sample Needle, PPS	700009512
Syringe, 100 µL, HP PPS Tip	700009529
Set Screw, M3 × 5, T6, for Needle Guide	700009530
Syringe, 250 µL, HPLC PPS Tip	700009576
Needle, 30 µL, pFTN	700009580
Cartridge, Inject, FTN, 18 K psi, APC	700009919



ACQUITY APC System.

ACQUITY APC PDA TS

Description	P/N
PDA/TUV Performance Maintenance Kit	201000273
PM Kit consists of: PerformancePLUS Lamp	
Parts and Accessories	
ACQ PDA TS Analytical Flow Cell	205001162
Assy, Tube Inlet .004 I.D. LT PEEK Nut	430001748
Assy, Tube Inlet .0025 I.D. LT PEEK Nut	430001749
Assy, Tube Inlet .0025 I.D. PEEK Nut PDA	430001783
Union, .020 I.D., V-detail	700002636
Performance Plus HB Deuterium Lamp Assy	700005269
Backpressure Restrictor	700009590

ACQUITY APC p-ISM

Description	P/N
p-ISM Performance Maintenance Kit	201000283
PM Kit consists of: Plungers, Check Valves, Seals, and Filters	
Parts and Accessories	
22 µL Filter Assy	205000731
Tube, Transducer to Check Valve, MP35N	430002475
Tubing Kit, SS, Standard Flow TUV/PDA, 6 and 10 in.	700003756
i2V Cartridge, Hexane/THF	700005272
Assy Check Valve, Dual Ball, and Seat	700005273
Transducer Pressure, Flex Cable	700006045
Assy, Cartridge Vent Valve	700006052
Pump Head, 316 SS, DLC, Face Seal	700009190
Tube, Degasser to i2 V	700009478
Tube Assy, Solvent Inlet, ISM	700009483
Tube, VV P4 to Waste, p-ISM	700009484
Tube, SW to Accum, EFTE	700009485
Tube, SW, Accum to Pri, EFTE	700009489
Tube, Seal to Waste, EFTE	700009490
Tube, Vent Valve P2 to Filter, ISM	700009491
Tube, VV to Waste	700009493
Tubing, GP Pump Outlet	700009911

ACQUITY UPLC I-Class System

Ordering Information

ACQUITY I-Class Sample Manager-FTN

Description	P/N
ACQUITY I-Class Sample Manager-FTN Performance Maintenance Kit	201000259
PM Kit consists of: Syringe, Std Needle, Injection Cartridge, and Filters	
Parts and Accessories	
Air Filter, Side Panel	401000694
Guide, Sample Needle	405008854
Seat, Vespel with Anti-rot	405011492
Assy, Tube, Out, Wash Pump	430002345
Assy, Tube, Feed, Injection Port	430002346
Assy, Tube, Feed, Syringe	430002347
Assy, Tube, Feed, Transducer	430002348
Assy, Tube, Feed, Injection Valve	430002349
Assy, Tube, Waste, EXT., Injection Valve	430002360
Assy, Tube, Waste, Injection Valve	430002362
Tube Assy, Sample Manager Purge	430002462
Syringe, 100 µL, HP	700002570
Filter, Solvent Bottle, SS, 7/pk	700003616
Assy Needle 15 µL with Guide and Seat 18 K psi	700008977
Assy, Seat Port, .003 I.D.	700006056
Assy, Cart, Inject, STR, FTN, 18 K psi	700006057
Tube, ACQUITY UPLC I-Class to MS MP35N 17 in.	700008939
Tube, ACQUITY UPLC I-Class to MS PEEKsil 17 in.	700008940
Tube, ACQUITY UPLC I-Class to MS PEEK 17 in.	700008941
Tube, ACQUITY UPLC I-Class to MS PEEK 21 in.	700008942
Tube, ACQUITY UPLC I-Class to MS PEEKsil 21 in.	700008943
Tube, ACQUITY UPLC I-Class to MS PEEKsil. 003 × 21 in.	700008944
10.5 in. Col to PDA Det Inlet, SST	205000895
8.5 in. Col to TUV Det Inlet, SST	205000896



ACQUITY UPLC I-Class System.

ACQUITY I-Class Sample Manager-FL

Description	P/N
ACQUITY I-Class Sample Manager-FL Performance Maintenance Kit	201000258
PM Kit consists of: Syringes, Std Needle, Injection Cartridge, 10 µL Loop and Filters	
Parts and Accessories	
Assy, Tube, SSV/P-3 to Transducer	430002558
Assy, Tube, SSV P-2 to VM/SSV	430002560
Assy, Tube, WS1 to VM/S-SY	430002564
Assy, Tube, WS2 to VM/W-SY	430002566
Assy, Tube, WS to VM/W-In.	430002568
Assy, Tube, SS to VM/S-In.	430002571
Assy, Tube, NCS Inlet	430002579
Assy, Tube, VDD	430003103
Tube, NCS, Puncture Needle to Elbow	430003159
Syringe, 100 µL, HP	700002570
Port, Seal, Needle Wash	700002886
Assy, Puncture Needle, .059 O.D.	700006067
Assy, Cart, Inject, STR, FL, 18 K psi	700006069
Syringe, 2.5 mL, Inverted	700006070
Assy, Sample Loop, EXT. Hypo Tip, 5 µL	430002936
Assy, Sample Loop, Hypo Tip, 10 µL	430002938
Assy, Sample Loop, EXT.D. Hypo Tip, 1 µL	430003166
Assy, Sample Loop, EXT. Hypo Tip, 2 µL	430002928
Kit, I-Class FEP/Metal Needle, 10 µL	700005925
Kit, I-Class PEEKsil Needle 10 µL	700005926
Kit, I-Class FEP/Metal Needle, 20 µL	700005929
Kit, I-Class ACQUITY UPLC PEEKsil Needle	700005930
Kit, I-Class PEEK Needle, 10 µL	700005923

ACQUITY I-Class BSM

Description	P/N
ACQUITY I-Class BSM Performance Maintenance Kit	201000260
PM Kit consists of: Plungers, Check Valves, Seals, and Filters	
Parts and Accessories	
Filter, Air	405003507
Assy, Tube, Degasser Port B2 to SSV B	430001113
Assy, Tube, Degasser Port B1 to SSV B	430001114
Assy, Tube, Degasser Port A1 to SSV A	430001115
Assy, Tube, Degasser Port A2 to SSV A	430001116
Assy, Tube, Accu. "B" Xducer—Vent Valve	430001199
Assy, Tube, Accu. "A" Xducer—Vent Valve	430001200
Assy, Tube, Vent Valve P5 to Tee/Filter	430001207
Assy, Tube, Vent Valve P2 to Tee/Filter	430001208
Assy, Tube, SSV to i2V	430001443
Assy, Tube, Vent Valve P1 to Waste	430001893
Assy, Tube, Vent Valve P4 to Waste	430001894
Assy, Tube, Head to Xducer, MP35N	430002472
Assy, Tube, Prim-out Xducer to CV, MP35N	430002583
Tube Assy, Solvent Inlet, BSM-CR	430002800
Plunger Assy, 2/pk	700002600
Support Plant, Thickened, VHP, Head	700002601
Filter, Air	700002632
Parts and Accessories	
Filter, Air	700002633
Screw, Comp., 10–32, SS Gold Plated, Short, 10/pk	700002634
Ferrule, Set, .062, Two-piece, 10/pk	700002635
Screw, Comp., 10–32, SS Gold Plated, Long, 10/pk	700002645
Primary Inlet Check Valve Filter Kit, 2/pk	700002912
Assy, Cartridge, Filter, SS Frit	700002913
Marker Set, Tubing, ACQUITY, 2/pk	700003102
Filter, Solvent Bottle, SS, 7/pk	700003616
Kit, Check Valve, Dual Ball and Seat, 2/pk	700003755
Ferrule, Lock Ring and Screws, Flangless, 7/pk	700003797
Assy, Cartridge, i2 V, Hexane/THF, 2/pk	700004139
Fitting and Lock Ring, GPV Filter, 4/pk	700005259
Pump Head, 316 SS, DLC, Face Seal	700009190
Seal, Wash, .0787 I.D., Fixed, 2/pk	700006048
SCR, Metric SKT Cap M5 × 40, 138 K psi, 4/pk	700006049
Assy, Cart, Vent, Dogleg, 18 K psi, Dome	700006052
*HP Seal, Dual Spring, Perform Seal, 2/pk	700009135
Assy, Housing, Seal Wash, .045, SST, 2PT	700009194

*S/N prior to G12BUR641M must use 0.045 Seal Wash Housing and Seals Conversion Kit (p/n:[205001097](#)) first.

ACQUITY UPLC H-Class System



ACQUITY UPLC
H-Class System.

Ordering Information

ACQUITY H-Class Sample Manager-FTN

Description	P/N
ACQUITY H-Class Sample Manager Flow Through Needle Performance Maintenance Kit	201000234
PM Kit consists of: Mixer, Plungers, Check Valves, Seals, and Filters	
Parts and Accessories	
Sample Needle Kit, 15 µL	700005215
In-line Waste Valve, 1/4-28 Thread	410003180
Seal Extension Tube	700005234
Injector Valve Cartridge, SM-FTN	700005236
Sample Needle Guide	405008854
Needle Seat	405011492
Syringe 100 µL, HP	700002570

ACQUITY H-Class Column Heater Active

Description	P/N
Door Latch with Pins	700005248
Clip Retainer	415001544
Active Preheater Assembly	205000730
Column Support Clips, 10/pk	205000478
Screw, Panel, M4 × 16, Blue	410003295
Extension Arm Kit, Optional	205000726
Drip Tray, CH-A	415001608
Tygon Tubing (0.375 in. O.D. × 0.250 in. I.D.)	700001796
External Cable, Right Angle	441001040
I-button, CH-A	700005251

ACQUITY H-Class Quaternary Solvent Manager

Description	P/N
ACQUITY H-Class Quaternary Solvent Manager Performance Maintenance Kit	201000233
PM Kit consists of: Mixer, Plungers, Check Valves, Seals, and Filters	
Parts and Accessories	
Bottle Tray	289002414
Seal Wash Waste Fittings	405003015
Plunger Removal Tool	405007627
Inlet Manifold	405010508
Screw, Metric Skt Cap M5 × 40, 2/pk	410001296
Tube Assembly, Degasser to GPV	430002208
Tube Assembly, Transducer to Vent Valve	430002316
Tube Assembly, Vent Valve P4 to Waste	430002317
Tube Assembly, Vent Valve P2 to Outlet Filter	430002319
Tube Assembly, Transducer to Check Valve	430002357
Tube Assembly, GPV-D to Mixer Manifold	430002387
Tube Assembly, GPV-C to Mixer Manifold	430002388
Tube Assembly, GPV-A to Mixer Manifold	430002389
Tube Assembly, GPV-B to Mixer Manifold	430002390
Tube Assembly, Mixer Manifold to i2V	430002400
Outlet Housing Cartridge, Stainless Steel	700001530
Transducer	700002594
Pump Head	700002595
Seal Wash Housing	700002597
Seal Wash Housing Seal	700002598
Head Plunger Seal	700002599
Plunger	700002600
Head Support Plate	700002601
Ferrule Set (.062, 2-piece), 10/pk	700002635
Vent Valve Cartridge Assembly	700002660
Screw, Metric Skt Cap M3 × 16, 4/pk	700004023
i2V Valve	700005162
Check Valve, Double Ball and Seat	700005164
i2V Valve Cartridge, 1/pk	700005165
Filter, Air, Door	700005167
Filter for GPV, 4/pk	700005173
Assy, Mixer, 100 µL, QSM	700005119
O-ring, Teflon, Pump Head	WAT076152
Seal Wash Pump Solenoid	WAT270926

ACQUITY UPLC H-Class Bio System



ACQUITY UPLC H-Class Bio System.

Ordering Information

ACQUITY H-Class Bio Column Management

Description	P/N
CH30-A	
APH Bio MP35N, 12.5 in. LG	205000756
APH Bio MP35N, 23 in. LG	205000777
CH-30A Tubing Kit, Bio	205000792
Tube, Outlet, MP35N, 22.5 in. LG	700008914
Tube, Outlet, MP35N, 36 in. LG	700008915
CM-A	
CM-A and CM-Aux Performance Maintenance Kit	201000207
PM Kit consists of: Filters	
Parts and Accessories	
Assy, MP35N, 14.5 LG, HP	700005481
Assy, MP35N, 14.5 LG, LP	700005482
Assy, MP35N, 19.0 LG, LP	700005483
Assy, MP35N, 19.0 LG, HP	700005484
Assy, MP35N, 22.5 LG, LP	700005485
By-pass Tubing, MP35N, .005 in. I.D.	430002779
APH Bio MP35N, 12.5 in. LG	205000756
APH Bio MP35N, 18.5 in. LG	205000775
Valve Cartridge Kit, Ti CM-A	205000773

ACQUITY H-Class Bio SM-FTN

Description	P/N
H-Class Bio FTN Performance Maintenance Kit	
PM Kit consists of: Syringe, Std Needle, Injection Cartridge, and Filters	201000201
Parts and Accessories	
Air Filter, Side Panel	401000694
Seat, Vespel with Anti-rot	405011492
Calibration Pin, RZZ Mechanism	405013532
Union, 1/4-28, THRU	410001281
Ferrule, Set, .062, Two-piece	410001349
Assy, Tube, Out, Wash Pump	430002345
Assy, Tube, Feed, Injection Port	430002346
Assy, Tube, Feed, Syringe	430002347
Assy, Tube, Feed, Transducer	430002348
Assy, Tube, Feed, Injection Valve	430002349
Assy, Tube, Waste, EXT., Injection Valve	430002360
Assy, Tube, Waste, Injection Valve	430002362
Tube Assy, Sample Manager Purge, Bio	430002464
Tube Assy, Sample Manager Wash, Bio	430002487
Syringe, 100 µL, HP	700002570
Screw, Comp., 10-32, SS Gold Plated, Short, 10/pk	700002634
Ferrule, Set, .062, Two-piece, 10/pk	700002635
Ferrule, Flangeless, Tefzel, Lock Ring	700003796
Ferrule, Lock Ring and Screws, Flangeless, 7/pk	700003797
Solvent Filter, Titanium, 7/pk	700005378
Cartridge, Inject Valve, Bio	700005407
Needle, DI-15 µL, MP35N, BioSM-FTN	700005421
Kit, Tube Markers, Purge/Wash	700005429

ACQUITY H-Class Bio QSM

Description	P/N
ACQUITY H-Class Bio QSM Performance Maintenance Kit	201000244
PM Kit consists of: Mixer, Plungers, Check Valves, Seals, and Filters	
Parts and Accessories	
Tube Assy, Solvent Inlet, BioQSM	430002274
Assy, Tube, Vent Valve P4 to Waste, QSM	430002317
Assy, Tube, Head to Xducer, MP35N	430002472
Assy, Tube, Degasser to GPV, MP35N	430002474
Assy, Tube, Xducer to Check Valve, MP35N	430002475
Assy, Tube, Xducer to Vent Valve, MP35N	430002476
Assy, Tube, Vent VLV P2 to Filter, MP35N	430002477
Assy, Tube, Mixer Manifold to i2V, MP35N	430002479
Assy, Tube, GPV-A to Mixer, MP35N	430002481
Assy, Tube, GPV-B to Mixer, MP35N	430002482
Assy, Tube, GPV-C to Mixer, MP35N	430002483
Assy, Tube, GPV-D to Mixer, MP35N	430002484
Transducer Assy, Head Mounted, 15 K psi	700002594
Plunger, .0787 Diameter x 1.415, 2/pk	700002600
Support Plant, Thickened, VHP, Head	700002601
Screw, Comp., 10-32, SS Gold Plated, Short, 10/pk	700002634
Ferrule, Set, .062, Two-piece, 10/pk	700002635
Screw, Comp., 10-32, SS Gold Plated, Long, 10/pk	700002645
Pin Plug, 1/16 in., High Pressure, 5/pk	700002747
Ferrule, Flangeless, Tefzel, Lock Ring	700003796
Ferrule, Lock Ring and Screws, Flangeless, 7/pk	700003797
Filter, Air, Door	700005167
Assy, Mixer, 100 µL, BioQSM	700005258
Fitting and Lock Ring, GPV Filter, 4/pk	700005259
Solvent Filter, Titanium, 7/pk	700005378
Barbed Seal Wash Housing, Titanium	700005410
Pump Head, ACQUITY, Titanium	700005411
Cartridge, Vent Valve, BioQSM	700005413
Cartridge, i2V, BioACQUITY	700005414
Check Valve, Accumulator, Ti	700005415
HP Seal, .0787 I.D., Flanged, Bio	700005418
Holder, 20 Micron Frit, Titanium, 4/pk	700005419
Wash Seal, .0787 I.D., Flanged, Bio	700005422

ACQUITY UPLC System

Ordering Information

ACQUITY UPLC Binary Solvent Manager

Description	P/N
ACQUITY i2 Valve Binary Solvent Manager Performance Maintenance Kit	201000197
PM Kit consists of: Plungers, Check Valves, Seals, and Filters	
ACQUITY Binary Solvent Manager Performance Maintenance Kit	201000173
PM Kit consists of: Plungers, Check Valves, Seals, and Filters	

Parts and Accessories	
100 µL Filter Mixer	205000404
High Sensitivity Filter Mixer, 425 µL	205000403
Tube Assembly, Solvent Inlet SDS	430001020
Degasser Port B2 to SSV B Tube Assembly	430001113
Tube Assembly, Transducer to Check Valve	430001121
Vent Valve P5 to Tee/Filter Tube Assembly	430001207
Tube Assembly, System Outlet SDS	430001486
Transducer Assembly, Head Mounted, 15 K psi	700002594
15 K psi Head	700002595
UPLC Primary Check Valve Assembly, 2/pk	700002596
Seal Wash Housing	700002597
Wash Seal, 2/pk	700002598
Head Plunger Seal	700002599
Plunger, 2/pk	700002600
Support Plate, Thickened, VHP Head	700002601
Solenoid Valve, Solvent Select	700002603
Fuse, 5A, 250 V, 5 × 20 mm, SLO BLO, 5/pk	700002604
Screw, Comp., 10–32, SS Gold Plated, Short 10/pk	700002634
Ferrule Set, 1/16 in. I.D., Two-piece, 10/pk	700002635
Union, .020 I.D.	700002636
Screw, Comp., 10–32, SS Gold Plated, Long, 10/pk	700002645
Vent Valve/Trap Valve Cartridge	700002660
Solvent Bottle Filter, Stainless Steel, 7/pk	700003616
Solvent Bottle Filter, Stainless Steel, 1/pk	700003615
50 µL High Pressure Filter Mixer	700002911
Primary Inlet Check Valve Filter Kit, 2/pk	700002912
ACQUITY Accum. Check Valve, 2/pk	700002968
O-ring, Teflon	WAT076152
Assembly, Actuator	700003557
Assembly, Tube, Transducer to Check Valve	430001773
Assembly, Tube, SSV to Active Check Valve	430001443
Fuse, 0.5 A Slow Blow	WAT042091



ACQUITY UPLC System.

ACQUITY UPLC Sample Manager

Description	P/N
ACQUITY Sample Manager Performance Maintenance Kit	201000174
PM Kit consists of: Syringe, Needle, and Filters	

Parts and Accessories	
ACQUITY UPLC Column In-line Filter Kit	205000343
Needle Stainless Steel, 30 µL	205000362
Needle, 15 µL Stainless Steel	205000363
Needle, Stainless Steel Tip, 30 µL	205000369
Needle, Stainless Steel Tip, 15 µL	205000370
Tube Holder, 24-well, 1.5 mL Tubes	405003740
Tube Holder, 48-well, 0.65 mL Tubes	405003741
Vial Holder, 24-well, 4 mL Vial	405003742
Vial Holder, 48-well, 2 mL Vial	700011047
250 µL Sample Syringe	410001347
Sample Needle Fitting Kit	410001659
Tube Assembly, Inject Outlet, (UPLC Fittings both ends)	430001084
Needle Guide Tube	430001086
Tube Assembly, Inject Out, (UPLC fitting at injector and HPLC fitting at Col. Inlet)	430001221
Sample Loop, 2 µL	430001264
Sample Loop, 5 µL	430001311
Sample Loop, 20 µL, Std.	430001320
Sample Loop, 50 µL	430001325
Sample Loop, 10 µL	430001326
2.5 mL Wash Syringe	700002569
100 µL Sample Syringe	700002570
Needle Seal O-ring, 002 Kalrez	700002572
Needle Assembly, PEEK	700002644
ACQUITY Injector Pod/Cartridge	700002765
0.2 µm SS Column In-line Replacement Frits, 5/pk	700002775

ACQUITY UPLC Sample Organizer

Description	P/N
ACQUITY Sample Organizer Performance Maintenance Kit	201000208
PM Kit consists of: Filters	
Parts and Accessories	
Door Window Shade	700003794
Vial Holder, 48-well, 2 mL Vial	700011047
Vial Holder, 24-well, 1.5 mL Tubes	405003740
Vial Holder, 48-well, 0.65 mL Tubes	405003741
Vial Holder, 24-well, 4 mL Vial	405003742



ACQUITY UPLC Bottle Accessory Kit.

ACQUITY UPLC Bottle Accessory Kit

Description	P/N
ACQUITY UPLC Bottle Accessory Kit	205000589

ACQUITY UPLC Column Manager, Column Heater, and Cooler

Description	P/N
Column Stabilizer Kit, 50/100 mm Columns	205000291
Column Stabilizer Kit, 150 mm Columns	205000365
Column Support Clips, 10/pk	205000478
Ferrule, PEEK, 1/16, HPFT, 10/pk	700003114
Fingertight Reusable Fittings Kit	700003139
Door Seal Gasket	700003147
Snap-in. Clip, 1/16 Tubing	700003151
Column Retainer Rod, 2/pk	700003156
Exit Drip Tray	700003164
I-button Cord Clip	700003167
Collet, Reusable, HPFT, 10/pk	700003168
Screw, Comp., Reusable, HPFT, Gold, 10/pk	700003169
1-piece Fitting, 10-32, 10/pk	700004841
Column Support Clips, Column Heater, 10/pk	205000263
Column Heater Thermal Gasket	425000536
Front Cover, Column Heater	700002587
Collet, Reusable, HPFT, 2/pk	700003115
Screw, Comp., Reusable, HPFT, Gold, 2/pk	700003116

ACQUITY UPLC Open Architecture System

Description	P/N
Open Architecture UPLC Performance Maintenance Kit	
PM Kit consists of: Injection Cartridge, 10 µL Loop Tension Cords, and Lubricant (Relevant Syringe is ordered separately)	201000198
Parts and Accessories	
10 µL Sample Loop	430001326
25 µL Syringe	700002705
5 µL Sample Loop	430001311
Column Manager Tubing Assembly	430002015
Column Stabilizer Tubing Assembly	205000585
Injection Valve Adapter	700004145
Injection Valve Pod	700011083
MS Inlet Tubing Assembly	430001229
O-ring, Injection Valve Drive	700004147
Syringe Kit, 25 µL	205000275
System Outlet Tubing	430001017
Valve Drive	700002455
Waste Check Valve Kit	700004057
Ferrule Set, (062), 2-piece	700002635
Screw, Comp., 10-32, SS Gold Plated, Long 10/pk	700002645
Screw, Comp., 10-32, SS Gold Plated, Short 10/pk	700002634

DID YOU KNOW...

Waters supplies System Performance Standards that can help you benchmark and trend ACQUITY UPLC data, enhancing productivity and increasing the accuracy of results.

 For more information, visit asr.waters.com



ACQUITY Isocratic Solvent Manager.

ACQUITY Isocratic Solvent Manager

Description	P/N
ACQUITY ISM Performance Maintenance Kit	201000286
PM Kit consists of: Plungers, Check Valves, Seals, and Filters	
Parts and Accessories	
22 µL Filter Assy	205000731
Assy, Tube, Head to Xducer	430001120
Assy, Tube, Xducer to Check Valve	430002357
Wash Pump Solenoid	WAT270926
Plunger, .0787 Diameter × 1.415, 2/pk	700002600
Support Plant, Thickened, VHP, Head	700002601
Primary Inlet Check Valve Filter Kit	700002912
Transducer, Pressure	700006045
Seal, Wash, .787 I.D., Fixed, 2/pk	700006048
Tube, Vent Valve P2 to Filter, ISM	700009491
Tubing, .156 O.D. × .031 I.D., Pharmed	700009694
Tube, Inlet to Check Valve	700009699
Tube Assy, Solvent Inlet, ISM	700009700
Tee, w/Bracket	700009708
Tube, PEEK, .007 in. I.D. × 16 in. L	700009709
Module, Restrictor, 100 S/R	700009712
Module, Restrictor, 10 S/R	700009713
Module, Restrictor, 250 S/R	700009714
Capillary Tube, ISM Outlet	700009715
Capillary Tube, Optic Det Inlet	700009716
Module, Restrictor, 5 S/R	700009776
Tube, PEEK, .062 × .010 × 60.0 LG	700009778
Tube, PEEK, .062 × .005 × 26.0 LG	700009779
Tube, PEEK, .007 I.D., 28.0 in. LG	700009780
Tube, Connector, UPC ²	700009781
Module, Coiled Probe, Dual Det	700009782
Module, Coiled Probe, Triple Det	700009783
Tube, PEEKsil, 75 µm × 31 in. L	700009784
Support Plate for Drip Tab	700009789
Tube, SST w/AU, .007 in. I.D. × 28 in. LG	700009796
Tube, SST, .005 in. I.D. × 20 in. L	700009797
Tube, SST, .01 in. I.D. × 60 in. L	700009798
Tube, SST/w/AU, .007 in. I.D. × 5 in. L	700009799
Solvent Filter, Thru Tube, 316SS	700010196
O-ring, 2-016, Teflon	WAT076152

ACQUITY UPLC DETECTORS

ACQUITY QDa Detector

Description	P/N
ACQUITY QDa® 'KAB' STD Performance Maintenance Kit	
PM Kit consists of: O-rings, Seals, Filters, Aperture Disk Assy, and Calibration Pin	201000300
ACQUITY QDa 'KAD' STD Performance Maintenance Kit	
PM Kit consists of: O-rings, Seals, Filters, Aperture Disk Assy, and Calibration Pin	201000308
ACQUITY QDa 'KAB' High Performance Maintenance Kit	
PM Kit consists of: O-rings, Seals, Filters, Aperture Disk Assy, Calibration Pin, and Rotary Pump Components	201000301
ACQUITY QDa 'KAD' High Performance Maintenance Kit	
PM Kit consists of: O-rings, Seals, Filters, Aperture Disk Assy, Calibration Pin, and Rotary Pump Components	201000309

Performance Maintenance Kit does not include the probe. We strongly recommend you purchase and replace annually the appropriate probe, selecting it from the list below.

Note: Instruments prior to KAB1052 will also require MKII Ion Block Assy, (p/n: [70001037Z](#)) fitted to the instrument.

Parts and Accessories	
ESI Probe Assembly 250 mm	700009641
ESI Probe Assembly 500 mm	700009642
SFC Probe Assembly 200 mm	700009771
Probe Assembly 750 L × 50 µm	700009977
O-ring, 2.6 I.D. × 1.9 C/S Viton, 10/pk	700000943
MKII Ion Block Assembly	700010377
Sample Cone	700009597
Gasket, Pumping Block (Front)	700011132
Seal, Custom Shaft	700009601
Gasket, Ion Block	700009603
Source Aperture Carrier	700009608
O-ring, Viton, 28 × 1 mm	700009614
Cone Gas Nozzle	700009625
Cone Clamp	700009626
Source Gas Seal	700009627
Calibration Pin, Assy (for MKII Ion Block)	700011295
Pumping Block Assembly	700009678
Rotary Pump, RE6 B-oil, 1 L	700009679
Diaphragm Pump Service Kit	700009680
ESI Source Attachment Knob, 2/pk	700009690
Aperture Disc Assembly, 0.2 mm, Performance	700009768
Aperture Disc Assembly, 0.09 mm, Standard	700009769
O-ring, Conductive, 7.1 × 1.6 mm	700009810
Septa, Advanced Green, Non Stick, 11 mm	700009976
External Valve Drain Assembly	700010156
Thumbscrew Assembly	700010158
Oil Filter Insert	700010211
Absorbent Felt	700010213
Gasket, Pumping Block (Rear)	700011133



ACQUITY UPLC
RI Detector.

ACQUITY UPLC RI Detector

Description	P/N
Kit, ACQUITY RI Compatibility Kit for APC	205001157
Parts and Accessories	
Valve, 2-way Solenoid	700002360
Assy, Pressure Relief, 1/4–28, 35 psi	700002361
Valve, 3-way Recycle	700002362
Tubing, Union to Relief Valve	700002363
Tubing, Union to Purge Valve	700002364
Tubing, 2-way to 3-way Valve	700002378
Welded Tube Assy, SST, 14.5 LG, HP	700005476
Ferrule, Flangeless w/Lock Ring–3/pk	700009440
Tubing, ETFE, .030 I.D. × .062 O.D.	700009554

ACQUITY UPLC TUV Detector

Description	P/N
ACQUITY PDA/TUV 2489/2998 Performance Maintenance Kit	
PM Kit consists of: PerformancePLUS Lamp (TUV with S/N K05UPT700N or higher)	201000281
Parts and Accessories	
ACQUITY UPLC I.D. Cell TUV, Analytical	205015033
Flow Cell, High Sensitivity, 2.4 µL Vol. (TUV with S/N K05UPT700N or higher)	205015018
Connector Plug, 10-position	323000247
Tube Assembly, Low Flow, TUV Inlet	430001749
Tube Assembly, Std. Flow, TUV Inlet	430001748
Ethernet Patch Cord, 5 ft.	441000456
Fuse, 3.15A (250 V, 5 × 20 mm), 2/pk	700001800
Backpressure Regulator	700002676
Power Cord, 110 V	442000176

ACQUITY UPLC PDA Detector and eLambda Detector

Description	P/N
ACQUITY PDA/TUV 2489/2998 Performance Maintenance Kit	
PM Kit consists of: PerformancePLUS Lamp	201000281
Parts and Accessories	
ACQUITY PDA, Standard Flow Cell, 10 mm, 500 nL (for earlier models)	205015036
ACQUITY UPLC I.D. Cell PDA, Analytical Flow Cell	205015017
ACQUITY UPLC I.D. Cell PDA, High Sensitivity	205015019
Connector Plug, 10-position	323000247
Ethernet Patch Cord, Shielded, 5 ft.	441000456
Event Cable, 6 ft.	441000373
Backpressure Regulator, 250 psi	700002676
Fuse, 3.15A (250 V, 5 × 20 mm), 2/pk	700001800
Power Cord, 110 V	442000176
Assembly, Tube Inlet .004 I.D. PDA	430001784
Leak Sensor	205000505
Tube Assembly, Low Flow, PDA Inlet	430001783

ACQUITY UPLC FLR Detector

Description	P/N
ACQUITY UPLC FLR Detector Performance Maintenance Kit	
PM Kit consists of: Lamp Assy	201000193
Parts and Accessories	
ACQUITY FLR Flow Cell Assembly	700003711
Fuse Drawer	WAT055426
Fuse 3.15A, 250 V	700001800
10-position I/O Connector	323000247
Connector Shell Cover	323000446
Union, Internal Reducer	410002096
Backpressure Regulator	700002676
Fluorescence System PQ Solution	700003694
Analog Out Cable Assembly	WAT057235
Power Cord, 110 V	442000176
External Ethernet Cable	441000372

ACQUITY UPLC ELS Detector

Description	P/N
ACQUITY ELSD/ELSD Performance Maintenance Kit	201000159
PM Kit consists of: Lamp Assy	
Parts and Accessories	
Nebulizer	205000342
Connector Plug, 10-position	323000247
Packing Ring, Nebulizer	425000326
PEEK Tubing, 6 in. × .004 in. I.D.	430001562
PEEK Tubing, 14 in. × .004 in. I.D.	430001565
Ethernet Cross-over Cable, 3 ft.	440000145
Ethernet Patch Cord, 5 ft.	441000456
Bottle/Vapor Trap, 1000 mL	700002682
Siphon Drain Tube	700002801
Event In./Out Cable Assembly	WAT020321
Analog Out Cable Assembly	WAT057235
Fuse 5.0A, 250 V, 5 × 20 mm, Fast-acting	WAT163-18

WATERS HIGH BRIGHTNESS LAMP WITH INTELLIGENT TECHNOLOGY

The Waters High Brightness (HB) Lamp boasts features that outshine its competition's. In a lamp history file in the Empower Software Database, the lamp's "intelligent" technology records its serial number, hours of use, and number of ignitions. Moreover, you can include the lamp history in a comprehensive status report, so if you transfer the lamp between units, its data remain with it. Thus you always know exactly how many hours the lamp has operated.

The High Brightness Lamp with Intelligent Technology is currently available for our latest ACQUITY UPLC PDA and TUV Detectors.



Description	P/N
PerformancePLUS HB Deuterium Lamp Assembly	700005269

Waters Fraction Manager—Analytical

Description	P/N
Analytical Fraction Manager Performance Maintenance Kit	201000291
Parts and Accessories	
Assy, Needle, FC-007 I.D., MP35N	700009406
Assy, Needle, FM-10 I.D., MP35N	700010339
Guide, Needle, FC	700010380
Syringe, 250 µL, HPLC	410001347
Assy, Fraction Valve with Coupling	700009400
Basin, Needle Wash	700010215
Assy, Tube, FM Flush	700010453
Assy, Tube, MSV-FV, Interconnect	700010457
Assy, Tube, FV, Inlet	700010458
Tube, Convoluted, 1/4 I.D. × 72 LG	700009402
Tube, Convoluted, 1/4 I.D. × 1.75 LG	700009408
WFMA Delay Coil 0.1–1 mL Flow Kit #1	205001416
WFMA Delay Coil 0.5–2.2 mL Flow Kit #2	205001417
WFMA Delay Coil 2.2–5 mL Flow Kit #3	205001418
WFMA w/QDa Delay Coil 0.1–1 mL Flow Kit 4	205001419
Low Flow Detector—WFMA Tubing Kit	205001427
Assy, Tube, Det-FM, .007" × 14" L, ETFE	700010334
Assy, Tube, Det-FM, .007" × 32" L, ETFE	700010335
High Flow Detector—WFMA Tubing Kit	205001428
Assy, Tube, Det-FM, .010" × 14" L, ETFE	700010336
Assy, Tube, Det-FM, .010" × 32" L, ETFE	700010337
Assy, Tube, Restrictor/Waste, Frac Valve	700010338
Assy, Tube, Res/Waste, FV, Hi Flow	700010345
Kit, 10 mL Vial Holder	205001042
Vial, 2.2 × 45 mm with 20–400 screw top, 100/pk	186001420
96 Well 350 µL ACQUITY Collection Plate	186002643
Plate, 96-well, 700 µL Round Well, 25/pk	186005837
1 mL Round Collection Plate, 50/pk	186002481
2 mL Square Collection Plate, 50/pk	186002482
Holder, 48-well, 2 mL Vial	700011047
Glass Vial with Screw Neck, 100/pk	186000273
Holder, 24-well, 4 mL Vial	405003742
4 mL Vial, Screw Top, 100/pk	186000840
Holder, 48-well, .65 mL Tubes	405003741
Holder, 24-well, 1.5 mL Tube	405003740

DID YOU KNOW...

Waters offers a range of services to support Agilent LC and GC Systems.

 Consult your Waters service representative to learn more.

ACQUITY UPLC M-Class System

Ordering Information

ACQUITY M-Class μ BSM/ASM

Description	P/N
μ BSM/ASM Performance Maintenance Kit	
PM Kit consists of: Mixer, Plungers, Check Valves, Seals, and Filters	201000289
Parts and Accessories	
Certified Container Low Volume Kit	186007278
Assy, Tube, Vent Valve P1 to Waste	430001209
Assy, Tube, Vent Valve P4 to Waste	430001210
Assy, Tube, Head to Xducer, MP35N	430002472
Assy, Tube, Prim-out Xducer to CV, MP35N	430002583
Plunger, .0787 Diameter \times 1.415, 2/pk	700002600
Support Plant, Thickened, VHP, Head	700002601
Valve, Solenoid, Solvent Select	700002603
Tubing, 3/16 in. O.D. \times 1/16 in. I.D., TYGON, 25 in.	700003751
Filter, In-line, Titanium Kit, 2/pk	700003784
Cartridge, Filtered Ferrule, Titanium, 2/pk	700003785
i2V PEEK High Pressure Gasket	700005218
PEEK Check Valve Washer	700005221
Reduced Height i2V, Bio	700005412
Cartridge, Valve, Vent	700005413
Cartridge, i2V, BioACQUITY	700005414
Check Valve, Accumulator, Ti	700005415
Transducer, Pressure	700006045
Filter, 1/2 micron, HP, Titanium	700009010
Tee, nano, M-detail, Ti	700009830
Seal, Wash HSG, Dual Sprg, 2P, Ti	700009836
Pump Head, Ti, DLC, Face Seal, Straight	700009837
HP Seal, Dual Spring, .045, 2/pk	700009838
Seal, Wash .0787 I.D., Fixed, Bio, 2/pk	700009839
Tube, Degass Port B2-SSV B, MP35N	700009843
Tube, Degass Port A2-SSV A, MP35N	700009844
Tube, SSV to i2V, MP35N	700009845
Tube, Vent Valve P2-filter, MP35N	700009846
Tube, Vent Valve P5-filter, MP35N	700009847
Tube, Accu "A" Xducer-V V P3	700009848
Tube, Accu "B" Xducer-VV P6, MP35N	700009849
Tube, Filter Inlet A, FCM, MP35N	700009850
Tube, Filter Inlet B, FCM, MP35N	700009851
Tube Assembly, Inlet ASM	700009858
O-ring, 2-016, Teflon	WAT076152



ACQUITY M-Class μ SM-FL

Description	P/N
μ SM-FL Performance Maintenance Kit	
PM Kit consists of: Syringes, Std Needle, and Filter	201000290
Parts and Accessories	
Plug, One-piece, 10-32, Coned	410001400
Tube Assy, Strong Needle Wash-in.	430002491
Tube Assy, Weak Needle Wash-in.	430002680
Sample Loop, Ext. Hypo Tip, 2 μ L	430002928
Sample Loop, Ext. Hypo Tip, 5 μ L	430002936
Sample Loop, Ext. Hypo Tip, 10 μ L	430002938
Sample Loop, Ext. Hypo Tip, 1 μ L	430003166
Syringe, 100 μ L, HP	700002570
Kit, I-Class PEEKsil Needle 10 μ L	700005926
Puncture Needle, .059 O.D.	700006067
Tube, Vent/Drain	700009863
Cart, Injection, 18 K psi, μ SM-FL	700009864

ACQUITY M-Class TVM

Description	P/N
Tee, MMV Nano	289004442
Tube, Cap, 40 μ m \times 10 in., V-V, HP	700009875
Tube, Cap, 25 μ m \times 30 in., M-M, HP	700009876
Tube, Cap, 40 μ m \times 6 in., V-V, HP	700009878
Tube, Cap, 40 μ m \times 6 in., M-V, HP	700009880
Tube, Cap, 40 μ m \times 26 in., V-V, HP	700009881
Cap Tube, 40 μ m \times 30 in., V-PT, HP	700009889
Capillary Tubing, 40 μ m \times 40 in., Inlet	700010399
Waste Tube, TVM, 31 in.	700009892
Cap Tube, 40 μ m \times 20 in. L, M-V	700009894
Cap Tube, 25 μ m \times 20 in. L, M-V	700009895
Assy, Waste Tube	700010401
Nano Tee, #6-40 Ports	700009920
Tube, PEEKsil, 25 μ m \times 30 in. L, M-V	700010040
Tube, PEEKsil, 25 μ m \times 50 cm. LG, V-V	700010042
Tube, Cap w/Frit, 40 μ m \times 26 in. L	700010059

nanoACQUITY UPLC System

Ordering Information

nanoACQUITY High Pressure BSM/ASM

Description	P/N
nanoACQUITY Solvent Manager Performance Maintenance Kit	201000181
PM Kit consists of: Plungers, Check Valves, Seals, and Filters	

Parts and Accessories

Assembly, Bottle Tray	289002414
1/2 µm Filter Assembly	289002111
Solvent Filter Assembly, 5 µm	289002172
Degasser Port B2 to SSV B Tube Assembly	430001113
Degasser Port B1 to SSV B Tube Assembly	430001114
Degasser Port A1 to SSV A Tube Assembly	430001115
Degasser Port A2 to SSV A Tube Assembly	430001116
Tube Assembly, Pump Head to Transducer	430001120
Tube Assembly, Transducer to Check Valve	430001121
Tube, Vent Valve Port 1 to Waste	430001209
Tube, Vent Valve Port 4 to Waste	430001210
Tube, Vent Valve Port 5 to Filter	430001346
Solvent Inlet Tube (Aux. Pump Only)	430001389
Tube Set, A2 and B2 Inlet Lines	430001436
Tube, Vent Valve Port 2 to Filter	430001511
Tube, Vent Valve Port 5 to Filter	430001512
Tube, ACC. A Transducer to Vent Valve P3	430001534
Tube, ACC. B Transducer to Vent Valve P6	430001535
Tube, Filter to Flow Sensor Inlet A	430001568
Tube, Filter to Flow Sensor Inlet B	430001569
Tube, ASM to MS, 25 µm × 60 in.	430001572
Fuse Drawer	700001502
Transducer Assembly, Head Mounted, 15 K psi	700002594
15 K Pump Head	700002595
UPLC Primary Check Valve Assembly, 2/pk	700002596
Wash Seal, 2/pk	700002598
Head Plunger Seal	700002599
I/O Connector Plug, 12 pin	WAT270868
Plunger, 2/pk	700002600
Support Plate, Thickened	700002601
Solenoid Valve, Solvent Select	700002603
Fuse, 5A, 250 V, 5 × 20 mm, SLO BLO, 5/pk	700002604
Ferrule Set, 1/16 i.D., Two-piece, 10/pk	700002635
Screw, Comp., 10–32, SS Gold Plated, Long, 10/pk	700002645
Vent Valve/Trap Valve Cartridge	700002660
1/2 µm Filter Insert Assembly	700002696
Tube, Vent Valve Port 2 to Filter	700002702
Tube, ASM to MS, 25 µm × 60 in.	700002712
Solvent Inlet System Tube Set	700002713
Check Valve, Double Ball and Seat, 2/pk	700002968
O-ring, Teflon	WAT076152

nanoACQUITY
UPLC System.



nanoACQUITY High Pressure Sample Manager

Description	P/N
nanoACQUITY Sample Manager Performance Maintenance Kit	201000182
PM Kit consists of: Plungers, Check Valves, Seals, and Filters	

Parts and Accessories

Shuttle Tray Kit	205000542
Kit, Tubing 2D/2 Pmp. Trap, nanoACQUITY	205000398
Union, Zero Dead Volume	289000439
nano-Tee without Gauge Pin	289002576
nano Trap Column Holder	289002802
Tube Holder, 24-well, 1.5 mL Tubes	405003740
Tube Holder, 48-well, 0.65 mL Tubes	405003741
Vial Holder, 24-well, 4 mL Vial	405003742
Vial Holder, 48-well, 2 mL Vial	700011047
Fitting, Plug, PEEK, Knurled	405005067
Fitting, PEEK, Knurled One-piece	405005068
50 µL Sample Syringe	410001348
2 µL Sample Loop	430001264
5 µL Sample Loop	430001311
20 µL Sample Loop	430001320
50 µL Sample Loop	430001325
10 µL Sample Loop	430001326
Assembly, Cap. Tube with Frit 25 µm × 18 in.	430002242
Capillary Tubing with Frit, 25 µm × 10 in.	430001570
Capillary Tubing with Frit, 40 µm × 16 in.	430001571
25 µm Capillary, BSM to Trap Valve	430001575
40 µm Capillary, ASM to Inject Valve	430001576
Capillary Tubing Assembly, Injection Valve to Column	430001577
Capillary Tubing Assembly, Injection Valve to Trap Valve	430001629
2.5 mL Wash Syringe	700002569
100 µL Sample Syringe	700002570
Needle Seal O-ring, 002 Kalrez	700002572
Fuse, 0.25A, 250 V	700002576
Fuse, 10A, 5 mm × 20 mm, Slo Blo	700002577
Screw, Comp., 10–32, SS Gold Plated, Short, 10/pk	700002634
Sample Needle, PEEK, 15 µL	700002708
Capillary Tube, 300 µm Column Inlet	700002754
Capillary Tube, 300 µm Column Outlet	700002755
300 µm Column Inlet/Outlet Tubing Kit	700002757
Injector Valve Pod/Cartridge	700002907
Column Heater	700002908

nanoACQUITY TUV Detector

Description	P/N
ACQUITY PDA/TUV 2489/2998 Performance Maintenance Kit	
PM Kit consists of: PerformancePLUS Deuterium Lamps (with S/N K05UPT700N and above)	201000281
Parts and Accessories	
TUV Flow Cell, 10 nL (TUV with S/N K05UPT700N and above)	205015013
Connector Plug, 10-position	323000247
Fuse, 3.15A (250 V, 5 × 20 mm), 2/pk	700001800
Backpressure Regulator	700002676
Fuse Holder	WAT055426

nanoACQUITY UPLC System with 2D Technology

Description	P/N
Assembly, Waste Tube, HTM, PEEK	430001456
Union, Nano, 6–40	289004407
Tee, Nano M-M-V-Detail	289004442
Capillary Tubing, BSM-MMV Tee, M-M 25 µm × 24 in.	430002140
Capillary Tubing, Injection Valve to Trap Valve, V-V 40 µm × 13 in.	430001629
Holder, MVM nano-Tee	700004599
Assembly, Capillary Tubing, 1st D Col. In./Out 10 in.	430002183
Assembly, Capillary Tubing, Trap Valve to MMV Tee 12 in.	430002153
Assembly, Capillary Tubing, BSM2-Injection Valve, 22 in.	430002155
Assembly, Capillary Tubing, BSM-Trap Valve, 30 in.	430001575
Assembly, Pod, Trap Valve, 3 trace	700004601
Assembly, Capillary Tube with Frit 25 µm × 18 in.	430002242
nano-Tee, M-M-M Detail	289002576
Pin Plug, 1/16 in., High Press.	700002747
Capillary Tubing Assembly Injection Valve to Trap Valve	430001577
Capillary Tubing with Frit, 40 µm × 16 in.	430001571
Tubing Assembly, Solvent Select Valve to In-line Filter	430001470
Mixer Assembly, 1.0 × 50 mm, Zirc. Bead	289003345
Tubing, Capillary, 300 µm Col. Outlet	430001848
Tubing, Capillary with Frit, 75 µm × 10 in.	430001837
Tubing, Capillary with Frit, 75 µm × 8 in.	430001835
Thumb Screw, Stainless Steel, M5 × 11 mm Large	410001697
Ethernet Switch Box, 8-port	725000455
Mixer Kit for 1 mm Column	205000540

nanoACQUITY HDX Manager

Description	P/N
Parts and Accessories	
Assy, Tube, Post Column, .005 I.D.	430001919
Assy, Tube, Column HTR/CLR, HPLC	430001923
Column Clip, 4/pk	700002143
Ferrule Set, 1/16 I.D., Two-piece, 10/pk	700002635
Screw, Comp., 10–32, SS Gold Plated, Long, 10/pk	700002645
One-piece Fitting, 10–32, 10/pk	700004841
Clip, Snap-in., 1/16 in. Tubing, 5/pk	700003792
Union	WAT097332


ACQUITY UPLC FLEXCARTS

Make Your System Mobile

A complete-system platform, the ACQUITY UPLC FlexCart wheeled cart provides the means to position an ACQUITY UPLC System close to a mass spectrometer's ionization source, facilitating its installation and operation. Fitted with electrical outlets, a computer monitor and keypad, and a container for fluid waste, the FlexCart is compatible for use with ACQUITY UPLC and nanoACQUITY Systems.



Description	P/N
ACQUITY UPLC FlexCart	205015015
nanoACQUITY UPLC FlexCart	205016040

 Visit waters.com/parts for more information about parts and accessories for your ACQUITY UPLC and nanoACQUITY UPLC Systems.

Alliance Separations Modules

Ordering Information

e2695 SEPARATIONS MODULE



Description	P/N
e2695 Separations Module Performance Maintenance Kit	
PM Kit consists of: Plungers, Check Valves, Seals, Filters, Needle, Syringe (250 µL), and enhanced Injector Rebuild Kit	201000313

2695 SEPARATIONS MODULE



Description	P/N
2695 Separations Module Performance Maintenance Kit	
PM Kit consists of: Plungers, Check Valves, Seals, Filters, Needle, Syringe (250 µL), and Injector Rebuild Kit	WAT270944

2695D SEPARATIONS MODULE



Description	P/N
2695D Separations Module 8 Needle Performance Maintenance Kit*	
PM Kit consists of: Dispenser Syringes, Needles, and Filters	70000201

*Note: For proper maintenance of the 2695D, please make sure to order, PM Kit: [70000201](#) and PM Kit: [WAT270944](#).

IMPORTANT INFORMATION ABOUT SELECTING COMPONENTS FOR WATERS SEPARATIONS

Modules and Pumps

Waters separations modules and pumps are constructed using the highest-quality components available. The component parts recommended in Waters' Performance Maintenance protocols are intended to optimize a system's performance for the widest range of applications possible. Yet, to meet certain performance expectations, some applications may require an alternative technology. For such applications, several options are available that may in some cases affect superior performance in a particular operating environment.

The information that follows serves as a guide to selecting alternative components. It is not intended as a hard-and-fast set of rules. Rather, it is a set of recommendations that, if adopted, may prove more effective, depending on specific application requirements. To determine the best configuration for an application, you may need to experiment.

Sapphire Plungers

Sustained and proper operation of any pump depends on the cleanliness and smoothness of its plungers. Our Performance Maintenance strategy recommends you change sapphire plungers once a year.

The condition of an LC system's sapphire plungers is critically important to its reliable operation. Our PerformancePLUS Sapphire Plunger's crystalline structure is oriented lengthwise, rather than randomly. The effect is a harder, better-sealing surface at the circumference of the plunger and durability that extends the plunger's usable life considerably beyond that of other plungers.

Plunger Seals

The material out of which plunger seals are made is critical. You can obtain seals made of various materials that serve as alternatives to the recommended ones. Some of these seals improve performance in specific applications. The usable life of plunger seals is typically six months to one year. If you find that the life of your seals is shorter than six months, you might try alternative seals.

Plunger-Seal Wash

Seal-wash solvent lubricates the plungers and flushes away any solvent or dried salts forced past the plunger seal from the high-pressure side of the piston chamber. This wash cycle extends the life of the seals. Position the plunger seal-wash reservoir in a visible location above the solvent management system, and refill the reservoir, as necessary, with a solvent suited to your application.

For reversed-phase HPLC applications, use an aqueous seal-wash solution, adding enough organic content to inhibit bacterial growth. For example, depending on your application, you might use an 80:20 water/methanol or water/acetonitrile mixture. For all GPC (normal-phase) separations, use a 50:50 methanol/water mixture as the seal-wash solution.

Note: Ensure that you use separate solutions and containers for the plunger-seal wash and the needle wash for the sample-management system or autosampler. Because the functions of these solutions differ, the

use of one solution for both functions may compromise the effectiveness of either needle washing or plunger-seal washing. Change plunger seal wash seals whenever you change the main plunger seals.

Check Valves

Check-valve failures can be a common cause of reproducibility problems. Check-valve failure modes, such as sticking (failure to open or close) and intermittent leaks, can cause variable retention times and pressure fluctuations. Intermittent leaks are often caused by particulate matter that sticks to the ball of the check valve. These particulates can come from the mobile phase, shredded seal material, dirty glassware, or an unclean laboratory environment.

We offer the choice of various types of check-valve cartridges. The standard cartridge incorporates a valve fitted with a ball made of synthetic ruby and a seat made of sapphire. A second option is the PerformancePLUS™ Check-valve Cartridge,* standard on 500- and 600-series pumps. Like the standard cartridge, the PerformancePLUS Cartridge incorporates a ruby ball and sapphire seat, though both are larger than those in the standard cartridge, as is the internal volume. The PerformancePLUS Cartridge also provides excellent sealing characteristics and, at higher flow rates, its larger orifices can provide a performance advantage. Finally, the PerformancePLUS Cartridge is more effective than the standard cartridge in its resistance to sticking. Nevertheless, where sticking problems associated with ruby/sapphire ball-and-seat check-valves persist, we offer a valve fitted with ceramic ball and seat.

For most applications, expect check valves to perform to specifications for a year or more. Note, however, that laboratory practices, such as solvent preparation, choice of plunger-seal material, and the mobile phase required for certain applications can significantly shorten the usable life of these valves. You can reduce or eliminate a tendency toward sticking. To do so, experiment with different ball-and-seat sizes and materials of construction. Then determine which provide optimal performance for a particular application and operating environment.

*Requires PerformancePLUS Separations Module Check Valve Housing, p/n: [700002332](#), 2/pk.

Common Parts for Alliance Systems



DID YOU KNOW...

We offer one-stop shopping for all your training needs. Log on to our training site at **waters.com/courses** for this information:

- Courses and their descriptions
- Fees
- Current course schedules
- Special offers and discounts
- Easy course registration

Ordering Information

Common Parts for Alliance System 2695/D

Description	P/N
PerformancePLUS Alliance Plunger Assy	WAT270959
Head, Plunger Seal Kit (Clear)	700001326
Head, Plunger Seals Repl. Kit (Std—Yellow)	WAT270938
Head, GFP Plunger Seal Kit (Optional Black)	WAT271066
Head, Face Seals Replacement Kit, 4/pk	WAT270939
Wash Tubes Seals Replacement Kit, S/W	WAT270940
Seal Wash Face Seal Replacement Kit	WAT271017
Seal Wash Plunger Seal Replacement Kit	WAT271018
Check Valve Cartridge Replacement Kit (2 cart.)	WAT270941
PerformancePLUS Check Valve Cartridge	700002399
Check Valve Cartridge	700002761
Ceramic Check Valve	700002333
PerformancePLUS Check Valve Housing	700002332
In-line Filter	WAT035190
Filter Insert	WAT088084
Assembly, GPV	WAT270927
Nut, Head	WAT270964
Degasser Chamber	700001218
25 µL Syringe	WAT077343
250 µL Syringe	WAT073109
100 µL Syringe	700011456

Description	P/N
2500 µL Syringe	WAT077342
PerformancePLUS Needle	700001247
HPMV Rebuild Kit	WAT045424
HPMV and Seal Tool Kit	WAT045427
Assembly, Seal Pack Replacement Kit with Needle	700002791
Seal Pack Rebuild Kit with Needle	WAT271019
Kit, Carousel Set, 5/pk	WAT270328
Solvent Bottle Caps, 4 L, 4/pk	WAT062341
Bottle Caps, 1 L, 4/pk	WAT062479

HPLC Pumps

Ordering Information

515 HPLC PUMP



515 Performance Maintenance Kit



Clear-100™ Plunger Seals, 4/pk



Description	P/N
515 HPLC Pump Performance Maintenance Kit	WAT052587
PM Kit consists of: Plungers, Check Valves, Seals, and Filters	

1515 SERIES HPLC PUMP



1515 Performance Maintenance Kit



Solvent Filter



Clear-100 Plunger Seals, 4/pk



Description	P/N
1515 Series HPLC Pump Performance Maintenance Kit	201000113
PM Kit consists of: Plungers, Check Valves, Seals, and Filters	

1525 SERIES HPLC PUMP



1525 Performance Maintenance Kit



Solvent Filter



Clear-100™ Plunger Seals, 4/pk



Description	P/N
1525 Series HPLC Pumps Performance Maintenance Kit	201000114
PM Kit consists of: Plungers, Check Valves, Seals, and Filters	

Parts and Accessories	
1525 to 1525 Extended Flow Conversion Kit	205000324
1525 EF Performance Maintenance Kit	201000160

1525 MICRO HPLC PUMP



1525 micro Performance Maintenance Kit



Description	P/N
1525 micro HPLC Pump Performance Maintenance Kit	201000161
PM Kit consists of: Plungers, Check Valves, Seals, and Filters	

Common Parts for HPLC Pumps

Description	515	1515 1525	1525 Micro	Extended Flow	P/N
1525 micro Seal Kit			•		205000202
Active Seal Wash Kit 1525		•			205000251
Active Seal Wash Kit 1525 EF				•	205000252
Active Seal Wash Kit 1525 micro			•		205000250
AQ Seal Repl., 2/pk	•	•			WAT025296
AQ Seal Repl., 4/pk	•	•			WAT025297
Plunger Seal UP30, 1/pk				•	700002282
Plunger Seal, TAN (Rulon)	•	•			WAT025384
Seal, Clear-100	•	•			WAT022934
Seal, Clear-100, 4/pk	•	•			WAT022946
Seal, Kit Black, Replace	•	•			WAT026613
Seals, Aqueous, Buffer, 2/pk	•	•			WAT025296
Seals, Aqueous, Buffer, 4/pk	•	•			WAT025297
1525, Check Valve, 2/pk			•		700002275
B and S Check Valve Kit				•	WAT088223
Extended Flow Update Kit	•			•	WAT207119
Inlet Check Valve				•	WAT032646
Inlet Check Valve Housing				•	WAT060308
Outlet Check Valve				•	WAT025028

Description	515	1515 1525	1525 Micro	Extended Flow	P/N
Outlet Check Valve				•	WAT025216
Outlet Check Valve Housing				•	WAT025207
Outlet Check Valve Rebuild Kit				•	WAT026014
PerformancePLUS Cartridge with Housing, 2/pk	•	•	•		700000253
PerformancePLUS Ceramic Check Valve Cartridge	•	•	•		700002399
PerformancePLUS Check Valve Cartridge	•	•	•		700000254
Plunger Wash Kit (225 µL)				•	WAT030852
Assembly, Plunger	•	•			WAS207069
Oriented Plunger, 510	•	•			WAT069511
Plunger				•	WAT060304
Retaining Ring	•	•	•	•	WAT025360
Assembly, Solvent Filter	•	•	•	•	WAT025531
Reference Valve 600/510	•	•		•	WAT026592
Reference Valve Rebuild Pump Kit	•	•	•	•	WAT025746
Safety Syringe, 10 mL	•	•	•	•	WAT027629
Priming Syringe Needle	•	•	•	•	WAT025559
Head Support Bushing	•	•	•	•	WAT060305
Ind. Rod Kit	•	•	•	•	WAT069583

Gradient Modules

Ordering Information

2545/2525 BINARY GRADIENT MODULE



Description	P/N
2545/2525 Binary Gradient Module Performance Maintenance Kit	201000130
PM Kit consists of: Plungers, Check Valves, Seals, and Filters	

2545 QUATERNARY GRADIENT MODULE



Description	P/N
2545Q Performance Maintenance Kit	201000199
PM Kit consists of: Plungers, Check Valves, Seals, and Filters	

2535 QUATERNARY GRADIENT MODULE



Description	P/N
2535 QGM Performance Maintenance Kit	201000209
PM Kit consists of: Plungers, Check Valves, Seals, and Filters	

2555 QUATERNARY GRADIENT MODULE



Description	P/N
2555 QGM Performance Maintenance Kit	201000210
PM Kit consists of: Plungers, Check Valves, Seals, and Filters	

Common Parts for Gradient Modules

Description	Binary			Quaternary		P/N
	2545/2525	2535	2545	2535	2545	
Assembly, Leak Sensor		205000505
Plate, Head Support				.	.	405006414
Pump Head .395				.	.	405008440
Plunger C-Clip		410000570
Tubing, Mixer to Vent Valve		430002032
Assembly Tube, Right Transducer Outlet		430002121
Check Valve Cartridge Kit, 4/pk	.					700001493
Plunger Seal Kit, 4/pk	.					700001494
Assembly, Cartridge Housing Outlet		700001530
Assembly Housing, Inlet Check Valve		700001529
Outlet Pump Filter Assembly				.	.	700001836
Block, Stop Valve Positioning		700004425
Drip Tray, Leak Sensor, 2545Q, LS Ready		700004430

Description	Binary			Quaternary		P/N
	2545/2525	2535	2545	2535	2545	
Inlet Manifold Block		700004431
Bracket Mixer Inlet, Manifold Z		700004439
Assembly, Mixer				.	.	700004436
Manifold Outlet Check Valve		700004445
Pump Head Assembly		700004454
Assembly, Tube 1/4 Solvent Inlet (from Solvent Bottle)				.	.	700004607
Assembly Pump Head Support Plate		700004613
Solvent Filters, 4/pk		700005083
Assembly Mixer				.	.	700005084
Helium Connection Kit		WAT023486
Assembly, Solvent Filters (Sparge)		WAT025531
Manifold Tee 2555Q				.	.	WAT070122

Fluid Handling Units

Ordering Information

REAGENT MANAGER



Description	P/N
Reagent Manager Performance Maintenance Kit PM Kit consists of: Plungers, Check Valves, Seals, and Filters	201000102
Parts and Accessories	
EZ Grip Nut, 3/pk	700000146
EZ Grip Ferrule, 3/pk	700000145

Tools

Description	P/N
Capillary Tubing Cutter	605000101
PEEK Tubing Cutter	700001012
Collet and Compression Screw Multi-tool	700003170
3/16 in. Open End Wrench	700000610
Plunger Insertion Tool	WAT011042
Snap Ring Pliers	WAT025263
Tubing Cutter for 1/16 in. Stainless Steel Tubing	WAT022384
Tubing Cutter, Spare Blades, 3/pk	WAT022385
Hex Key for 2465 Flow Cell Assembly	700001985

DID YOU KNOW...

Waters Educational Services Fast Facts

- We train more than 6000 users each year at six corporate training centers worldwide.
- We operate more than 110 training locations in 30 countries.
- Our instructors are specialized and certified in specific subject areas.
- We offer flexible delivery options: classroom, onsite, and online.
- Most courses are available at your location.

We offer more than 180 courses in theory, practice, maintenance, and qualification of LC, MS, and UPLC applications and informatics applications.

 Visit [waters.com/courses](https://www.waters.com/courses)

Our courses address these subjects:

- General chromatography.
- LC-MS fundamentals.
- Supercritical fluid chromatography
- Operation of Waters instruments
- Operation of Waters software.
- Principles of compliance.

Special Discounts for Warranty and Support Plan Customers

If your HPLC, UPLC, and mass-spectrometry systems are covered by a support warranty or plan, you can receive as much as a 20% discount on any instrument, software, or application course. Consult your local Waters training coordinator for more information.

Injectors/Fraction Collectors

NEW 3767



Description	P/N
3767 Performance Maintenance Kit	
PM Kit consists of: Analytical and Preparative Valve Rebuild kits, Vented Probe/Needle, Inject Ports & Grease. Appropriate Syringes for the configured injection volume should also be ordered separately	201000333
Parts and Accessories	
Syringe, 1.0 mL, 3767	700012876
Syringe, 2.5 mL, 3767	700012877
Syringe, 5.0 mL, 3767	700012878
Syringe, 12.5 mL, 3767	700012879
Vented Probe/Needle	700001387
Inject Port Assembly 4/pk	700002284
Analytical Valve Rebuild Kit	201000124
Preparative Valve Rebuild Kit	700001331
Sample Loop, 2 mL	700001987
Sample Loop, 5 mL	700001989
Sample Loop, 10 mL	700001991
Kit, 2.5 mL Syringe, 3767*	700013083
Kit, 5.0 mL Syringe, 3767*	700013084
Kit, 12.5 mL Syringe, 3767*	700013085

* Kit includes: Syringes, Loops and Holding Loops and accessories to enable injection volumes of 2 ml, 5 ml or 10 ml.

NEW GC PAL 3

Description	P/N
GC-PAL3 Performance Maintenance Kit	
PM Kit consists of: Replacement Wash Vials, Lubrication Kit & Agitator belts	201000335
Parts and Accessories	
Drive Belt, PAL3 Agitator, 6 × 20 ml, 3/pk	700012528
Wash Vial Kit, 10 ml	700013059
PAL, Lubrication Kit	700002945
Liquid Tool	700012879
Smart Syringe, 10 µL	700012540

NEW 3777C



Description	P/N
3777C Performance Maintenance Kit	
PM Kit consists of: 10 µl Syringe, Needle, One piece Needle Seal, Replacement Rotor for Analytical Valve, Holding & Sample Loops Rebuild kits, Vented Probe/Needle, Inject Ports & Lubrication Kit	201000318
Parts and Accessories	
100 µl Syringe 3777C	700011725
Needle 3777C (3/pk)	700011726
Holding Loop 3777C	700011727
Sample Loop 10 µL	700002504
Rotor Inject Valve, 6 Port, 2 Position	700002292
One Piece Needle Seal 3777C (5/pk)	700012893
PAL, Lubrication Kit	700002945



Parts and Accessories	
Headspace Tool:	
Smart Syringe, 2500 µL	700012539
Cap, Magnetic, for 20-ml Vial, Headspace, 100/pk	700012542
Vial, Amber, 20-ml, with Screw Cap, Headspace, 100/pk	700012516
Vial, Clear, 20-ml, with Screw Cap, Headspace, 100/pk	700012541

2777/2777C SAMPLE MANAGER

2777C Sample Manager



2777 Sample Manager

Description	P/N
2777/2777C Sample Manager Performance Maintenance Kit	201000162
PM Kit consists of: Tension Cord and Lubrication Kit	

Rotors List Associated with the Valco Valves

Rotor 10 Port 2 Pos 0.4 mm Cheminert Valve	700001230
Rotor 6 Port 2 Pos 0.4 mm LC Injection Valve	700002210
Rotor 6 Port 2 Pos 0.4 mm Cheminert	700002292
Rotor 6 Port 2 Pos 0.25 mm Cheminert	700002293
Rotor 10 Port 2 Pos 0.4 mm LC Injection Valve	700002297
Rotor 4 Port 2 Pos 0.5 µL Internal Loop LC Injection Valve	700002298
Rotor 6 Port 2 Pos 0.75 mm Cheminert	700002439

Note: These rotors are not included in the PM Kit; must be ordered separately based on the type of valve.

2767 AUTOSAMPLER



2767 Performance Maintenance Kit



Description	P/N
2767 AutoSampler Performance Maintenance Kit	201000195
PM Kit consists of: Probe, Injector Port, and Rotors	

Syringes to complement the 2767 AutoSampler Performance Maintenance Kit:

500 µL Reagent Syringe	700003434
1.0 mL Reagent Syringe	700003435
2.5 mL Reagent Syringe	700003436
5.0 mL Reagent Syringe	700003437
10 mL Reagent Syringe	700003438

2707 AUTOSAMPLER



2707 Performance Maintenance Kit



Description	P/N
2707 Performance Maintenance Kit	201000196
PM Kit consists of: Syringe (500 µL), Needle, and Rotor Seal	
2707 Prep Performance Maintenance Kit	201000306
PM kit consists of: Syringe (2500 µL), Prep Needle, and Rotor Seal	

Parts and Accessories

Stainless Steel Sample Loop, 20 µL	700000680
Stainless Steel Sample Loop, 5 µL	700000683
Bio-compatible Sample Loop, 100 µL	700000684
Stainless Steel Sample Loop, 100 µL	700000685
Wash Bottle, Glass, 250 mL	700004063
Stainless Steel Sample Loop, 10 µL	700003872
Air Needles, 50 mm, Yellow	700003921
Air Needles, 56 mm, Red	700003922
Air Needles, 68 mm, Blue	700003923
Air Needles, 74 mm, Green	700003924
Air Needles, 80 mm, Black	700003925
Stainless Steel Sample Loop, 50 µL	700003928
Preparative Sample Loop	700004086
Bio-compatible Sample Loop, 10 µL	700004088
Bio-compatible Sample Loop, 20 µL	700004089
Bio-compatible Sample Loop, 50 µL	700004090
Syringe, 500 µL	700000862
Needle Assy, Std	700003842
Needle Assy, Bio	700003843
Rotor Seal	700003851
Stator	700003852
Bottle, Wash Solvent, 250 mL, Glass	700004063
Vial Holder Tray, 12 pos., 10 mL	700004082
Needle Assy, 60 µL, Prep	700004085

WATERS FRACTION COLLECTOR III



Description	P/N
Tabletop Rack (for use with prep funnel rack)	289000440
Prep Funnel (32 position, 2 each set)	725000106
Prep Funnel Rack (holds up to 4 prep funnels)	725000107
4-Microtiter Plate Rack	725000110
Multi-purpose Rack	725000113
Carousel Rack (2 × 2690 Carousels)	725000144
Eppendorf Tube Collection Rack	725000145
17 mm O.D. Vial Collection Rack	725000146
28 mm O.D. Vial Collection Rack	725000147
Standard Test Tube Rack, 120 positions	725000152
Tygon Tubing, 6.35 mm I.D. × 9.52 mm O.D. × 5 m, 2/pk (use with prep funnel rack)	WAT037047
Teflon Tubing 8 mm I.D. × 50 ft. (for use with prep funnel rack)	WAT037090

MANUAL INJECTORS

7725 Analytical Injector Performance Maintenance Kit



Description	P/N
3725 High Pressure Manual Valve Performance Maintenance Kit	201000116
7010 Analytical Injector Performance Maintenance Kit	201000117
7125 Sample Injector Performance Maintenance Kit	201000118
7725 Analytical Injector Performance Maintenance Kit	201000119
8125 Micro-scale Injector Performance Maintenance Kit	201000120
9125 PEEK Valve Performance Maintenance Kit	201000121
7750E Stainless Steel Switching Platform Performance Maintenance Kit	201000122
7750E-075 Motorized Sample Injector Performance Maintenance Kit	201000125

Waters Quality Parts and Performance Maintenance Kits

We design and manufacture Waters Quality Parts and Performance Maintenance Kits according to demanding Waters Critical Clean™ processes. The same strict regulatory standards (ISO-9001 and cGMP) that we apply when manufacturing your high-performance systems apply to Waters Critical Clean processes. This unrelenting focus on quality confers these benefits:

- ✓ Continued system compliance
- ✓ Maximum lifetime and reliability of instruments and spare parts
- ✓ Contamination-free environment
- ✓ Accurate and reproducible results



Waters Performance Maintenance Kits offer a single, ready source of all the Waters Quality Parts needed to operate your instruments at peak performance for 12 to 24 months.

Visit waters.com/parts, and use our convenient spare-parts catalog or the graphical parts locator to order Waters Quality Parts and Performance Maintenance Kits.

For more information, consult your local Waters representative.

In the U.S. and Canada, call 1.800.252.4742

Detectors

NEW 3465



Description	P/N
Flexcell GC sb	700013047
Flexcell Au sb	700013048
Flexcell GC ISAAC	700013049
Flexcell GC HyREF	700013064
Flexcell Pt HyREF	700013065
Flexcell Au HyREF	700013050
Flexcell Ag HyREF	700013051
Flexcell BDD sb	700013066
Flexcell BDD HyREF	700013067
Flexcell Au HyREF with SS AUX	700013068
SenCell 2 mm GC sb	700013052
SenCell 2 mm Au sb	700013053
SenCell 2 mm Pt sb	700013069
SenCell 2 mm GC ISAAC	700013070
SenCell 2 mm Au ISAAC	700013054
SenCell 2 mm Pt ISAAC	700013071
SenCell 2 mm GC HyREF	700013055
SenCell 2 mm Au HyREF	700013056
SenCell 2 mm Pt HyREF	700013072
SenCell 2 mm Ag HyREF	700013057
ISAAC solution 10 mL	700001949
Fingertight fitting VT-03, M5	700001950
Polishing disc for WE	700001954
Polishing disc for REF	700002069
10 mL diamond slurry 1 µm	700001955
50 ml KCl solution sat'd, with AgCl	700001959

2489 UV/VISIBLE DUAL-WAVELENGTH ABSORBANCE DETECTOR

2489 Performance Maintenance Kit



Description	P/N
ACQUITY PDA/TUV 2489/2998 Performance Maintenance Kit	201000281
PM Kit consists of: PerformancePLUS Deuterium Lamp	
Parts and Accessories	
Autopure Flow Cell	289000614
Analytical Flow Cell	WAS081140
Inert Taper Slit Flow Cell	WAT081157
Semi-prep Flow Cell	WAT081158
Microbore Flow Cell	WAT081159
High Pressure Flow Cell	WAT081321
MS Flow Cell Rebuild Kit	700000168
10 mm Flow Cell Rebuild Kit	WAS081346
3 mm Flow Cell Rebuild Kit	WAS081347
I/O Connector, 10 Pin	323000247
Assembly, Cable, Ethernet, 10 ft. Straight Through	441000372
Ethernet 10 ft. Crossover Cable	700003423
Cuvette Holder Assembly	WAS081333
Gasket Kit, 10/pk	WAS081348
10 mm Cell, Linearity Solutions	WAT042881
Wavelength Accuracy Solutions	WAT042885
PQ Test Mix for Absorbance Detector	WAT042887
Two Cuvette Kit (empty)	700004155
Fuse, 3.25A, 250 V 5 × 20 mm, Fast-acting, 5/pk	700001800
Analog Out Cable Assembly	WAT057235
Power Cord, 110 V	442000176

2414 REFRACTIVE INDEX DETECTOR



Description	P/N
2414 Valve Upgrade Kit	700002670
Sample Inlet Tubing Assembly	700001710
Compression Screws and Ferrules Kit, 5/pk	WAT025604
Stainless Steel Tubing, 0.062 in. x .040 in. I.D. x 10 ft.	WAT026805
Stainless Steel Tubing, 0.062 in. x .009 in. I.D. x 10 ft.	WAT026973
Analog Signal Cable	WAT057235
IEEE-488 Cable 6 ft. (2 meter)	WAT087141
Power Cord, 110 V	442000176
I/O Connector Plug, 12 Pin	WAT270868

2424 EVAPORATIVE LIGHT SCATTERING (ELS) DETECTOR



2424/2420 Performance Maintenance Kit



Description	P/N
2424 ELS Detector Performance Maintenance Kit	201000159
PM Kit consists of: PerformancePLUS Lamp Cartridge Assembly	
Parts and Accessories	
Drip Tray	415000415
Vapor Trap (10 mm O.D. Bottle Trap)	700000574

2998 PHOTODIODE ARRAY DETECTOR (PDA)



2996 Performance Maintenance Kit



Description	P/N
ACQUITY PDA/TUV 2489/2998 Performance Maintenance Kit	201000281
Parts and Accessories	
2998 Analytical Flow Cell Kit	205000399
2998 Microbore Flow Cell Kit	205000400
2998 Semi-prep Flow Cell Kit	205000401
2998 AutoPurification Flow Cell Kit	205000402
Fuse, 3.15A, 250 V, 5 x 20 mm Fast Acting, 2/pk	700001800
Connector Plug, 10-Position	323000247
Connector Shell Cover	323000446
Ethernet Patch Cord, Shielded, 10 ft.	441000372
Event Cable, 6 ft.	441000373
Crossover Cable, 5E, 10 ft., Ethernet	700003423
Tubing, 3/8 in. O.D. x 1/4 in. I.D., Tygon	700001796
Cable, Assembly, Shield, Analog Output Signal Cable	WAT057235
PEEK Compression Fitting	WAT021815
Knob, Compression Fitting	WAT021816
Convuluted Tubing	430001556

DID YOU KNOW...

To enhance productivity and increase the accuracy of your results, we supply system-performance standards. For use with all detectors, these standards are for calibration, linearity, sensitivity, and benchmarking.

 Visit [waters.com/standards](https://www.waters.com/standards)

2465 ELECTROCHEMICAL DETECTOR



Description	P/N
Flow Cell Kit: 0.7 mm GC Working Electrode, Salt Bridge Reference Electrode	205004100
Flow Cell Kit: 2 mm GC Working Electrode, Salt Bridge Reference Electrode	205004115
Flow Cell Kit: 2 mm GC Working Electrode, ISAAC Reference Electrode	205004215
Flow Cell Kit: 3 mm Pt Working Electrode, ISAAC Reference Electrode	205004220
Flow Cell Kit: 3 mm AU Working Electrode, "HyREF" Reference Electrode	205004325
Flow Cell Kit: 3 mm Ag Working Electrode, "HyREF" Reference Electrode	205004330
Fuse, 5 × 20, 2.5A, T 250 V	700001004
RS-232 Cable	700001942
Dummy Flow Cell	700001943
External I/O Cable	700001948
ISAAC Solution, 10 mL	700001949
Fingertight Flow Cell Fitting	700001950
Spacer, 120 µm	700001951
Spacer, 25 µm	700001952
Spacer, 50 µm	700001953
Polishing Disk, Work Electrode	700001954
Diamond Slurry, 1 µm, 10 mL	700001955
Swivel, 2465 Salt Bridge Reference Electrode	700001956
Body, 2465 Salt Bridge Reference Electrode	700001957
Salt Bridge Ag/AgCl Reference Electrode	700001958
KCl Solution for Salt Bridge Ref (50 mL)	700001959
Working Electrode Block, 2 mm GC	700001960
Working Electrode Block, 3 mm, Platinum	700001961
Working Electrode Block, 3 mm, Gold	700001962
Working Electrode Block, 2 mm, Silver	700001963
Salt Bridge Inlet Block	700001964
HyREF Inlet Block	700001965
Cell Cable	700001968
2465 Integrator Cable	700001994
2465 ISAAC Inlet Block	700002003
Polishing Disk, Reference Electrode	700002069
Capillary Connection Kit for Micro Cell	700002103

2475 MULTI-WAVELENGTH FLUORESCENCE DETECTOR



2475 Performance Maintenance Kit



Description	P/N
2475 Multi-wavelength Fluorescence Detector	201000131
PM Kit consists of: Xenon Lamp Assembly	
Parts and Accessories	
Fuse, 4A SMD with Holder, 2/pk	700001840
Flow Cell	700001618

NEW 2432 CONDUCTIVITY DETECTOR



Description	P/N
Assembly, Cell 2432	700011185
Inlet tube, 2432	700011137
Outlet Tube, 2432	700011186

Quadrupole Time-of-Flight Mass Spectrometers



NEW SYNAPT XS

Description	P/N
SYNAPT XS Performance Maintenance Kit PM Kit consists of: Source Components, Heater Cartridge, Gaskets, Seals, LockSpray Reference Probe, Probe Tips, Air Filters.	201000326
Parts and Accessories	
ESI Probe Assembly 500 mm × 125 μm	700011241
ESI Probe Assembly 750 mm × 125 μm	700011242
ESI Probe Assembly (UPC ²) 750 mm × 50 μm	700011376
APCI Probe, 500 mm × 125 μm	700011244
APCI Probe, 750 mm × 125 μm	700011245
APCI Probe (UPC ²), 750 mm × 50 μm	700011427
LockSpray Reference Probe	700012329
Sample Cone	700011217

Note: The appropriate tool free probe should also be ordered as required for the system configuration.



NEW SELECT SERIES CYCLIC IMS

Description	P/N
SELECT SERIES Cyclic IMS Performance Maintenance Kit PM Kit consists of: Source Components, Heater Cartridge, Gaskets, Seals, Reference Probe, Probe Tips, Air Filters.	201000327
Parts and Accessories	
ESI Probe Assembly 500 mm × 125 μm	700011241
ESI Probe Assembly 750 mm × 125 μm	700011242
ESI Probe Assembly (UPC ²) 750 mm × 50 μm	700011376
APCI Probe, 500 mm × 125 μm	700011244
APCI Probe, 750 mm × 125 μm	700011245
APCI Probe (UPC ²), 750 mm × 50 μm	700011427
LockSpray Reference Probe	700012329
Sample Cone	700011217

Note: The appropriate tool free probe should also be ordered as required for the system configuration.



VION IMS Q-TOF

Description	P/N
Vion™ IMS QToF™ Performance Maintenance Kit PM Kit consists of: Source Components, ESI and Reference Probe Components	201000307
Parts and Accessories	
IonSABRE II Service Kit	700005744
APGC Service Kit	700004842



SYNAPT G2-S AND SYNAPT G2-Si

Description		P/N
SYNAPT G2-S/G2-Si LockSpray (Rotary) Performance Maintenance Kit	PM Kits consist of: Source Components, ESI and Reference Probe Components, and Vacuum Pump Components	201000254
SYNAPT G2-S/G2-Si LockSpray (Scroll) Performance Maintenance Kit		201000255
SYNAPT G2-S/G2-Si NanoLockSpray (Rotary) Performance Maintenance Kit		201000256
SYNAPT G2-S/G2-Si NanoLockSpray (Scroll) Performance Maintenance Kit		201000257
Parts and Accessories		
Outer APPI Source Service Kit		700004730
IonSABRE II Service Kit		700005744
APGC Service Kit		700004842
ETD Service Kit		700005276
MALDI Service Kit		700005275



SYNAPT G2

Description		P/N
SYNAPT G2 LockSpray Performance Maintenance Kit	PM Kits consist of: Source Components, ESI and Reference Probe Components, and Vacuum Pump Components	201000229
SYNAPT G2 NanoLockSpray Performance Maintenance Kit		201000230
Parts and Accessories		
Outer APPI Source Service Kit		700004730
APCI Probe Service Kit		700004673
APGC Service Kit		700004842
ETD Service Kit		700005276
MALDI Service Kit		700005275



XEVO G2-XS QTOF AND XEVO G2-S QTOF

Description		P/N
Xevo G2-S LS (Rotary) Performance Maintenance Kit	PM Kit consists of: Source Components, ESI and Reference Probe Components, and Vacuum Pump Components	201000276
Xevo G2-S LS (Scroll) Performance Maintenance Kit		201000277
Xevo G2-S NLS (Rotary) Performance Maintenance Kit		201000278
Xevo G2-S NLS (Scroll) Performance Maintenance Kit		201000279
Parts and Accessories		
Xevo G2-S ASAP Accessory		176002472
Outer APPI Source Service Kit		700004730
APCI Probe Service Kit		700004673
APGC Service Kit		700004842



XEVO G2 QTOF

Description		P/N
Xevo G2 QToF LS (Rotary) Performance Maintenance Kit	PM Kits consist of: Source Components, ESI and Reference Probe Components, and Vacuum Pump Components	201000238
Xevo G2 QToF LS (Scroll) Performance Maintenance Kit		201000239
Xevo G2 QToF NLS (Rotary) Performance Maintenance Kit		201000240
Xevo G2 QToF NLS (Scroll) Performance Maintenance Kit		201000241
Parts and Accessories		
Xevo G2 QToF ASAP Accessory		176002472
Outer APPI Source Service Kit		700004730
APCI Probe Service Kit		700004673
APGC Service Kit		700004842

Tandem Quadrupole Mass Spectrometers



NEW XEVO TQ-GC

Description	P/N
Xevo TQ-GC Performance Maintenance Kit	
PM Kit consists of: EI Filament Assy, EI Ion Chamber, Repeller, Ceramic Spacer, Fittings, Air Filters and RE6 Rotary Pump Components. Also purchased as part of 176004385 Xevo TQ-GC Perf Maint kit w/Chem which also provides test samples	201000325
Parts and Accessories	
EI Filament Assembly	700011877
Repeller, XL Source	700011883
EI Ion Chamber	700011878
CI Filament Assembly	700011877
CI Ion Chamber	700012014
Purifier Module, Helium 1/8" Fittings	700012331
Xevo TQ-GC CI Service Kit	700012077
Rotary Pump, RE6 B-oil, 1 L	70009679
Oil Filter Insert	700010211
Absorbent Felt	700010213



NEW XEVO TQ-S CRONOS

Description	P/N
Xevo TQ-S cronos Performance Maintenance Kit	
PM Kit consists of: O-rings, Seals, Filters, Aperture Disk, Calibration Pin, and nRV14i Rotary Pump Components	201000325
Parts and Accessories	
ESI Probe Assembly 500 LG × 125 μm	700011241
ESI Probe Assembly 750 LG × 125 μm	700011242
ESI Probe Assembly (UPC ²) 750 LG × 50 μm	700011376
Sample Cone (Reverse)	700012275
O-ring, Viton, 10 × 1.5 C/S	700004321
O-ring, Silicone, 009 (5/pk)	700004728
Seal, Custom Shaft	700009601
Lens Seal	700009602
O-ring, Viton, 28 × 1 mm	700009614
Rotary Pump Oil	5560020-S
Oil Filter	6060142
APCI Probe, 500 mm × 125 μm	700011244
APCI Probe, 750 mm × 125 μm	700011245
APCI Probe (UPC ²), 750 mm × 50 μm	700011427



XEVO TQ-XS

Description	P/N
Xevo TQ-XS Performance Maintenance Kit with Chemical Kit	PM Kit consists of: Source Components 176004023
Parts and Accessories	
ESI Probe Assembly, 500 LG × 125 µm	700011241
ESI Probe Assembly, 750 LG × 125 µm	700011242
APCI Probe Assembly, 500 LG × 125 µm	700011244
APCI Probe Assembly, 750 LG × 125 µm	700011245



XEVO TQ-S

Description	P/N
Xevo TQ-S (Rotary) Performance Maintenance Kit with Chemical Kit	PM Kits consist of: Source Components, ESI Probe 176002745
Xevo TQ-S (Scroll) Performance Maintenance Kit with Chemical Kit	Components, and Vacuum Pump Components 176002744
Parts and Accessories	
Xevo TQ-S ASAP Accessory	176002472
Outer APPI Source Service Kit	700004730
IonSABRE II Service Kit	700005744
APGC Service Kit	700004842



XEVO TQ-S MICRO

Description	P/N
Xevo TQ-S Micro (Rotary) Performance Maintenance Kit with Chemical Kit	PM Kits consist of: Source Components, ESI Probe 176003850
Xevo TQ-S Micro (Scroll) Performance Maintenance Kit with Chemical Kit	Components, and Vacuum Pump Components 176003851
Parts and Accessories	
Xevo TQ-S Micro ASAP Accessory	176002472
IonSABRE II Service Kit	700005744
Outer APPI Source Service Kit	700004730
APGC Service Kit	700004842



XEVO TQD

Description	P/N
Xevo TQD (Rotary) Performance Maintenance Kit with Chemical Kit	PM Kits consist of: Source Components, ESI Probe 176002780
Xevo TQD (Scroll) Performance Maintenance Kit with Chemical Kit	Components, and Vacuum Pump Components 176002781
Parts and Accessories	
Xevo TQD ASAP Accessory	176002472
IonSABRE II Service Kit	700005744
Outer APPI Source Service Kit	700004730
APGC Service Kit	700004842



XEVO TQ

Description	P/N
Xevo TQ (Rotary) Performance Maintenance Kit with Chemical Kit	PM Kits consist of: Source Components, ESI Probe 176002058
Xevo TQ (Scroll) Performance Maintenance Kit with Chemical Kit	Components, and Vacuum Pump Components 176002059
Parts and Accessories	
APCI Probe Service Kit	700004673
Outer APPI Source Service Kit	700004730
APGC Service Kit	700004842



TQ DETECTOR (TQD)

Description	P/N
TQD (Rotary) Performance Maintenance Kit with Chemical Kit	PM Kits consist of: Source Components, ESI Probe 176002064
TQD (Oil Free) Performance Maintenance Kit with Chemical Kit	Components, and Vacuum Pump Components 176002135
Parts and Accessories	
SQD/TQD ASAP Accessory	176002049

Atmospheric Solids Analysis Probe (ASAP)

INCREASE WATERS LC AND MS SYSTEM PERFORMANCE WITH COST-EFFECTIVE UPGRADES

You can extend your laboratory's sample-analysis capabilities and flexibility by fitting certain Waters SYNAPT, Xevo, SQD, and TQD Mass Spectrometers with the Atmospheric Solids Analysis Probe. When installed in the following instruments, the probe enables rapid, direct analyses of volatile and semi-volatile solid and liquid samples:

- Xevo TQ-S
- Xevo TQ-S micro
- SYNAPT G2-Si
- Xevo G2 Tof/QToF
- Xevo G2-S Tof/QToF
- Xevo G2-XS Tof/QToF
- Xevo TQD/SQ Detector 2
- SQD/TQD Instruments

Owing to the game-changing nature of ASAP, these instruments can now perform analyses that they previously could not. For a relatively low cost, ASAP increases asset utilization and provides optimum productivity.

The ASAP technique proves a good alternative to analyses that rely on an EI/CI solids probe, doing so without the need of a vacuum lock. The technique offers these additional benefits:

- High-sensitivity analysis of low-polarity or nonpolar compounds unable to be ionized by ESI, APCI, or APPI
- Direct analysis of complex mixtures—no need for sample preparation or chromatographic separation



Description	P/N
SQD/TQD/3100 ASAP Accessory	176002049
SYNAPT G2-Si, Xevo G2 Tof/QToF, Xevo G2-S Tof/QToF, Xevo G2-XS Tof/QToF, and ASAP Accessory	176002472
Xevo TQD, Xevo TQ-S, Xevo TQ-S micro, SQD Detector 2 ASAP Accessory	176003243

Tool Free Probes

Tool free probes are now available as standard for many MS instruments and it is now possible to update the following instruments with the same enhanced customer experience that is provided with current production instruments.

XEVO TQ-S, XEVO TQD, XEVO TQ-S MICRO, XEVO G2-S, XEVO G2-XS, VION, SYNAPT G2-S, SYNAPT G2-SI

These probes provide significant customer user experience improvements

- 2 min to change capillary now vs 30 min manual rebuild activity previously
- Better operator-to-operator reproducibility
- Improved spray stability with UPC²
- Reduced number of potential leak pathways, delivering additional robustness and reliability
- Reduced level of operator training
- Time saving at Performance Maintenance visits



Description	P/N
Upgrade to MKIII Probe - Electrospray Contains ESI probe adaptor & probes 700011241 and 700011242	205001866
Upgrade to MKIII Probe - APCI Contains APCI probe adaptor & probes 700011244 and 700011245	205001867
Upgrade to MKIII Probe - UPC ² /ESI Contains ESI probe adaptor & probe 700011376	205001868
Upgrade to MKIII Probe - UPC ² /APCI Contains APCI probe adaptor & probe 700011427	205001869

There are preconfigured kits for your convenience based on your application listed above. If you wish to run more than one ESI application, or one APCI application you only need one probe adaptor, as pictured. Simply order the listed capillary starting 700... from the other kit as needed to meet your additional application requirements.

Note: Narrowbore / low flow Electrospray probes and IVD systems cannot be updated to tool free probes at this time.

Single Quadrupole Mass Spectrometers



NEW RADIAN ASAP

Description	P/N
RADIAN ASAP (High) Performance Maintenance Kit PM Kit consists of: O-rings, Seals, Filters, Aperture Disk Assy, Calibration Pin, and RE6 Rotary Pump Components	201000330
RADIAN ASAP (Std) Performance Maintenance Kit PM Kit consists of: O-rings, Seals, Filters, Aperture Disk Assy, and Calibration Pin	201000329
Parts and Accessories	
Glass Capillaries, 100/pk	700005025
Aperture Disc Assembly, 0.2 mm, Performance	700009768
Aperture Disc Assembly, 0.09 mm, Standard	700009769
MKII Ion Block Assembly	700010377
Sample Cone	700009597
Gasket, Pumping Block (Front)	700011132
Seal, Custom Shaft	700009601
Gasket, Ion Block	700009603
Source Aperture Carrier	700009608
O-ring, Viton, 28 x 1 mm	700009614
Cone Gas Nozzle	700009625
Cone Clamp	700009626
Source Gas Seal	700009627
Calibration Pin, Assy (for MKII Ion Block)	700011295
Pumping Block Assembly	700009678
Rotary Pump, RE6 B-oil, 1 L	700009679
Diaphragm Pump Service Kit	700009680
O-ring, Conductive, 7.1 x 1.6 mm	700009810
Septa, Advanced Green, Non Stick, 11 mm	700009976
Oil Filter Insert	700010211
Absorbent Felt	700010213
Gasket, Pumping Block (Rear) MKII FEPM	700012138



SQ DETECTOR2

Description		P/N
SQ Detector 2 (Rotary) Performance Maintenance Kit with Chemical Kit	PM Kits consist of: Source Components, ESI Probe Components, and Vacuum Pump Components	176002780
SQ Detector 2 (Scroll) Performance Maintenance Kit with Chemical Kit		176002781
Parts and Accessories		
Xevo TQD ASAP Accessory		176002472
IonSABRE II Service Kit		700005744
Outer APPI Source Service Kit		700004730
APGC Service Kit		700004842



SQ MASS DETECTOR

Description		P/N
SQD (Rotary) Performance Maintenance Kit with Chemical Kit	PM Kits consist of: Source Components, ESI Probe Components, and Vacuum Pump Components	176002064
SQD (Oil-free) Performance Maintenance Kit with Chemical Kit		176002135
Parts and Accessories		
SQD/TQD/3100 ASAP Accessory		176002049



3100 MASS DETECTOR

Description		P/N
3100 (Rotary) Performance Maintenance Kit with Chemical Kit	PM Kits consist of: Source Components, ESI Probe Components, and Vacuum Pump Components	176002064
3100 (Oil-free) Performance Maintenance Kit with Chemical Kit		176002135

Increase Waters LC and MS System Performance with Cost-Effective Upgrades

Expand the analytical capabilities of your current LC, UPLC, or MS system with a cost-effective upgrade. Visit waters.com/instrumentupgrades for more information about Waters' wide range of upgrades and accessories.



Time-of-Flight (ToF) Mass Spectrometers



NEW ACQUITY RDA

Description	P/N
ACQUITY RDa Performance Maintenance Kit	201000325
PM Kit consists of: O-rings, Seals, Filters, Aperture Disk, Calibration Pin, and nRV14i Rotary Pump Components	
Parts and Accessories	
Aperture Disc 0.2 mm, 5/pk	700012106
ESI Probe Assembly 500 mm	700011871
Sample Cone	700012132
O-Ring, Viton, 5.5 × 1.6 C/S	700012105
Seal, Custom Shaft	700009601
Gasket, Ion Block	700009603
O-ring, Viton, 28 × 1 mm	700009614
O-Ring, Viton, 7.1 × 1.6 C/S	5711180
O-Ring, Viton, 11.1 × 1.6 C/S	700009758
Cone Gas Nozzle	700009625
Cone Clamp	700009626
Source Gas Seal	700009627
Restrictor	700012103
Ion Block Assembly	700012137
Pumping Block Assembly	700009678
Gasket, Pumping Block (Front)	700011132
Gasket, Pumping Block (Rear)	700012138
Rotary Pump Oil	5560020-S
Oil Filter	6060142



XEVO G2-XS TOF AND XEVO G2-S TOF

Description	P/N
Xevo G2-S LS (Rotary) Performance Maintenance Kit	201000276
Xevo G2-S LS (Scroll) Performance Maintenance Kit	201000277
Xevo G2-S NLS (Rotary) Performance Maintenance Kit	201000278
Xevo G2-S NLS (Scroll) Performance Maintenance Kit	201000279
PM Kits consist of: Source Components, ESI and Reference Probe Components, and Vacuum Pump Components	
Parts and Accessories	
Xevo G2-S ASAP Accessory	176002472
Outer APPI Source Service Kit	700004730
APCI Probe Service Kit	700004673
APGC Service Kit	700004842



XEVO G2 TOF

Description		P/N
Xevo G2 ToF LS (Rotary) Performance Maintenance Kit	PM Kits consist of: Source Components, ESI and Reference Probe Components, and Vacuum Pump Components	201000238
Xevo G2 ToF LS (Scroll) Performance Maintenance Kit		201000239
Xevo G2 ToF NLS (Rotary) Performance Maintenance Kit		201000240
Xevo G2 ToF NLS (Scroll) Performance Maintenance Kit		201000241
Parts and Accessories		
Xevo G2 ToF ASAP Accessory		176002472
Outer APPI Source Service Kit		700004730
APCI Probe Service Kit		700004673
APGC Service Kit		700004842

Magnetic Sector Mass Spectrometer



AUTOSPEC/AUTO SPEC PREMIER

Description		P/N
AutoSpec Premier Mass Spectrometer Base Performance Maintenance Kit (Rotary)	PM Kits consist of: Vacuum Pump Maintenance Components	201000245
AutoSpec Premier Mass Spectrometer Base Performance Maintenance Kit (Scroll)		201000246
Parts and Accessories		
Electron Impact (EI) Source PM Kit for AutoSpec		201000152
Chemical Ionization (CI) Source PM Kit for AutoSpec		201000151
Alternate CI/EI (ACE) Source PM Kit for AutoSpec		201000153
Field Desorption (FD) Source PM Kit for AutoSpec		201000155
LSIMS/CS Gun Source PM Kit for AutoSpec		201000150
Outer Source Service Kit		700005589
Lock, Probe, and Valves Service Kit		700005590
GC Interface Service Kit		700005591

Column and Cartridge Fittings and Accessories

ACQUITY UPLC COLUMN IN-LINE FILTER UNIT



Description	P/N
In-line Filter Holder and six 0.2 µm Stainless Steel Replacement Filters	205000343
Five 0.2 µm Stainless Steel Replacement Filters and End Nuts for 205000343	700002775

ACQUITY UPLC COLUMN REPLACEMENT PARTS



Description	P/N
Three 0.2 µm Inlet/Outlet Frits for 2.1 mm I.D. UPLC Columns	700003776
Three 0.2 µm Inlet/Outlet Frits for 1.0 mm I.D. UPLC Columns	700003775
One Inlet End Nut for 2.1 mm I.D. UPLC Column	700003779
One Outlet End Nut for 2.1 mm I.D. UPLC Column	700003780

END CONNECTOR KIT (END-FITTINGS FOR CARTRIDGE COLUMNS)



Description	P/N
End Connector Kit (contains 1 Pair of End-fittings, C-clips and Coupling)	WAT037525
Replacement O-ring, 2/pk	WAT023401
Replacement C-clip, 1/pk	WAT037560

REPLACEMENT FILTER ASSEMBLIES FOR COLUMNS



Description	Porosity	P/N
2.1 mm	2 µm	600000177
2.1 mm	0.5 µm	600000178
3.0, 3.9, 4.6 mm	2 µm	600000179
3.0, 3.9, 4.6 mm	0.5 µm	600000180
7.8 mm	2 µm	600000181
7.8 mm	5 µm	600000182
19 mm	2 µm	600000183
30 mm	2 µm	600000184

PARKER-STYLE CARTRIDGE FITTINGS AND ACCESSORIES

You can use the end-fittings and accessories shown in the following table with these cartridge sizes:

- 46 mm (I.D.)
- 40 mm (I.D.)
- 30 mm (I.D.)



Description	P/N
Removable Column End-fitting, 2/pk	PSS614100
Frit Assembly (2 µm), 5/pk	PSS614103
Frit Assembly (0.5 µm), 5/pk	PSS614104
Column Coupler, 2/pk	PSS614102
Extended End-fitting for use with 10 mm Integral Guard, 1/pk	PSS614108
Nylon Column Plugs for Storage of Complete Column, 1/pk	WAT015674
Nylon Column Caps for Storage of Replacement Cartridge Column, 10/pk	PSS614113
In-line 10 mm Guard Cartridge Holder Kit for use with above items	PSS830008

¹ 30 mm Stand Alone Guard/Column (end-fittings not included).

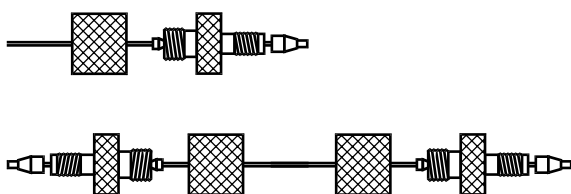
² Extended end-fitting for use with 10 mm Integral Guard, p/n: [PSS614108](#).

³ 10 mm Integral Guard Column.

⁴ Column Coupler, p/n: [PSS614102](#).

SLIPFREE Connectors

GENERATION HPLC COLUMN CONNECTOR



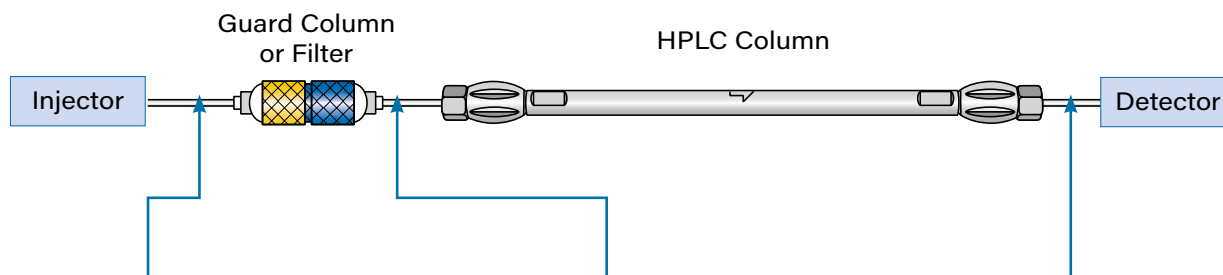
- Guarantees a void-free connection because it pushes tubing into the end-fitting (the connector is installed on the tubing at the factory)
- Fingertight to 10,000 psi—never need wrenches
- Readjusts to all column end-fittings; compatible with all tested commercially available end-fittings
- Stainless steel tread, for good stability and no particle generation
- Unique design separates tube-holding function from sealing function

SLIPFREE Fittings	P/N
Single SLIPFREE, 6 cm Long, 0.005 in. I.D.	PSL618000
Single SLIPFREE, 20 cm Long, 0.005 in. I.D.	PSL618004
Single SLIPFREE, 6 cm Long, 0.010 in. I.D.	PSL618006
Single SLIPFREE, 10 cm Long, 0.010 in. I.D.	PSL618008
Single SLIPFREE, 20 cm Long, 0.010 in. I.D.	PSL618010
Double SLIPFREE, 6 cm Long, 0.005 in. I.D.	PSL618001
Double SLIPFREE, 10 cm Long, 0.005 in. I.D.	PSL618003
Double SLIPFREE, 20 cm Long, 0.005 in. I.D.	PSL618005
Double SLIPFREE, 6 cm Long, 0.010 in. I.D.	PSL618007
Double SLIPFREE, 10 cm Long, 0.010 in. I.D.	PSL618009
Double SLIPFREE, 20 cm Long, 0.010 in. I.D.	PSL618011

0.010 in. I.D. is recommended for routine work.
 0.005 in. I.D. is recommended for column connection to short 4.6 mm I.D. and for small-bore or microbore connections.
 0.020 in. I.D. is recommended for prep or semi-prep connections, or for connections ahead of the injector.

How to Use a SLIPFREE Connector

Place a SLIPFREE Connector at any location in an HPLC system where connections must be made or broken frequently. Install a single SLIPFREE Connector at the injector or at any other fitting with conventional nuts and ferrules that would require infrequent removal. Install a double SLIPFREE Connector for column coupling or places where both ends of the connector must be loosened frequently.



Single SLIPFREE (length as needed)

The connecting end of a single SLIPFREE Connector should be placed where connections and disconnections will be made frequently, for example, the end-fitting of a column or detector. In the image, the other end-fitting is seated within the injector, held in place by a stainless steel nut and ferrule compatible with the injector brand.

Double SLIPFREE (60 mm length)

Place a double SLIPFREE Connector where you will make frequent connections and disconnections at both ends of the connector, for example, between an analytical column and guard column. Very short (6 cm) connectors of small inner diameter are available, to minimize resultant dead-volume. SLIPFREE Connectors fit the end-fitting of any column, regardless of its manufacturer.

Single SLIPFREE (length as needed)

Place the connecting end of a single SLIPFREE Connector where you will frequently make connections and disconnections, for example, the end-fitting of a column or detector. In the image, the other end of the tubing is seated within the detector, held in place by a stainless steel nut and ferrule compatible with the detector brand. If there is not a convenient way to connect to the detector, you can attach a union.

PEEK Tubing and Fittings

PEEK ONE-PIECE FINGERTIGHT FITTING, 1/16-INCH, 10-32 THREAD

For the most demanding applications, we recommend the high-performance fingertight HPLC fitting. Nut and ferrule are made from a single piece of PEEK, which helps the fitting remain leak-tight at pressures as high as 6000 psi (420 bar). With the knurled head of the nut increased in diameter, to facilitate tightening without tools, it's nonetheless a genuine fingertight.

Description	P/N
PEEK Fingertight One-piece Fitting	186008714

PEEK TWO-PIECE FINGERTIGHT FITTINGS, 1/16-INCH, 10-32 THREAD

Two-piece fingertight fittings, with a pressure rating of 4000 psi (280 bar), allow connections by hand. The inexpensive PEEK ferrules resist wear and deformation, lasting for at least 50 connections and disconnections before they require replacement. The nuts can be reused repeatedly. Chemically inert to a high degree, the PEEK ferrule can be used with any mobile phase. This fitting provides an inexpensive alternative to traditional HPLC fittings. It fits almost all HPLC fittings, including Swagelok, Parker, Rheodyne, Beckman, Valco, Waters, etc.—all with 10-32 female threads.

Description	P/N
PEEK Single Ferrule	PSL613316

PEEK FITTINGS WITH DOUBLE FERRULES, 1/16-INCH, 10-32 THREAD

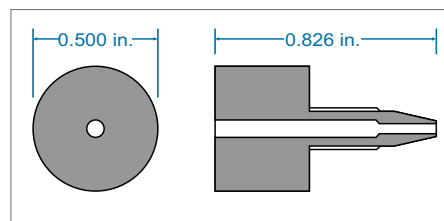
Double-ferrule fittings made of PEEK grip tubing in two places. The ferrules provide twice the holding power of single-ferrule fittings. They are ideal for use with PEEK and Tefzel tubing, which often slip when used with single-ferrule fittings. When used with stainless steel or titanium tubing, double-ferrule fittings grip tighter, creating a highly reliable connection that performs flawlessly at high pressures.

We offer both fingertight and hex-head nuts for use with double-ferrules. The fingertight version can be hand-tightened for operating pressures as high as 6000 psi. Use the hex-head version for connections that are difficult to reach or closely spaced.

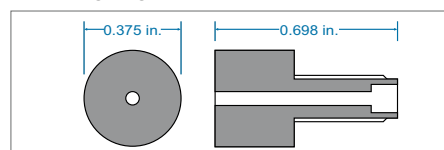
These fittings fit virtually any female 1/16-inch fitting, including Parker, Swagelok, Waters, Valco, Rheodyne, UPChurch, etc.—all with 10-32 threads.

Description	P/N
PEEK Double-ferrule	PSL613302
PEEK Hex-head Nut	PSL613324
PEEK Fingertight Nut	PSL613301
Stainless Steel Fingertight Nut	PSL613325

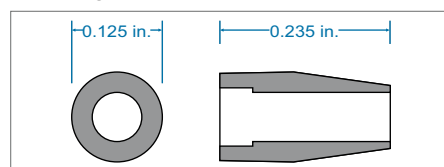
PEEK Fingertight One-Piece Fitting



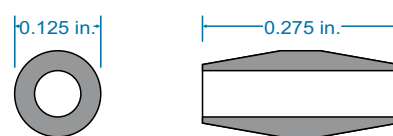
PEEK Fingertight Two-Piece Nut



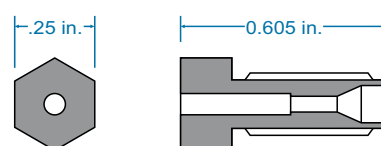
PEEK Single Ferrule



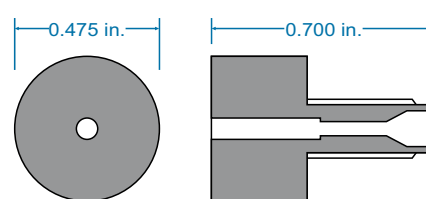
PEEK Double-Ferrule



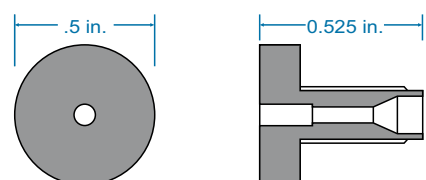
PEEK Hex-Head Nut



PEEK Fingertight Nut



Stainless Steel Fingertight Nut



PTFE/ETFE Tubing and Fittings

O.D. Inches (mm)	I.D. Inches (mm)	Length/Material	P/N
0.125 (3.2)	0.062 (1.57)	25 ft. (7.6 m), PTFE	WAT026808
0.149 (3.8)	0.119 (30.0)	25 ft. (7.6 m), PTFE	WAT026809
0.250 (6.3)	0.190 (4.8)	10 ft. (3 m), PTFE	WAT026810
0.080 (2.0)	0.058 (1.5)	25 ft. (7.6 m), PTFE	WAT026974
0.178 (4.52)	0.148 (3.76)	25 ft. (7.6 m), PTFE	WAT051041
0.149 (3.8)	0.119 (30.0)	20 ft. (6 m), PTFE	WAT051052
0.125 (3.2)	0.020 (0.508)	10 ft. (3 m), PTFE	WAT088430
0.125 (3.2)	0.009 (0.228)	10 ft. (3 m), PTFE	WAT088431
0.125 (3.2)	0.040 (1.0)	10 ft. (3 m), PTFE	WAT088432
0.062 (1.57)	0.009 (0.228)	36 in. (1 m), ETFE	WAT088561
0.062 (1.57)	0.040 (1.0)	36 in. (1 m), PTFE	WAT088563
PTFE Adapter, 0.125 (3.2) to 0.065 (1.6), 5/pk			WAT005137

Stainless Steel Tubing and Fittings

O.D. Inches (mm)	I.D. Inches (mm)	Length/Material	P/N
0.0625 (1.6)	0.005 (0.127)	10 ft. (3 m), SS	WAT241039
0.0625 (1.6)	0.020 (0.508)	10 ft. (3 m), SS	WAT026804
0.0625 (1.6)	0.030 (0.762)	10 ft. (3 m), SS	430000366
0.0625 (1.6)	0.040 (1.020)	10 ft. (3 m), SS	WAT026805
0.125 (3.2)	0.062 (1.57)	10 ft. (3 m), SS	WAT026806
0.125 (3.2)	0.093 (2.36)	10 ft. (3 m), SS	WAT026807
0.0625 (1.6)	0.009 (0.228)	10 ft. (3 m), SS	WAT026973
0.0625 in. O.D. Stainless Steel Tubing Cutter with 3 Blades			WAT022384
Replacement Blades for WAT022384 , 3/pk			WAT022385

PEEK Tubing and Fittings

O.D. Inches (mm)	I.D. Inches (mm)	Length/Material	P/N
0.0625 (1.6)	0.005 (0.127)	5 ft. (1.5 m), PEEK	WAT022995
0.0625 (1.6)	0.010 (0.254)	5 ft. (1.5 m), PEEK	WAT022996
0.0625 (1.6)	0.015 (0.381)	5 ft. (1.5 m), PEEK	WAT022997
0.0625 (1.6)	0.020 (0.508)	5 ft. (1.5 m), PEEK	WAT022998
PEEK Tubing Cutter			WAT031795
PEEK Tubing and Fitting Kit			WAT022999
PEEK Union, 0.0625 in.			WAT026-04

Compression Screws and Ferrules

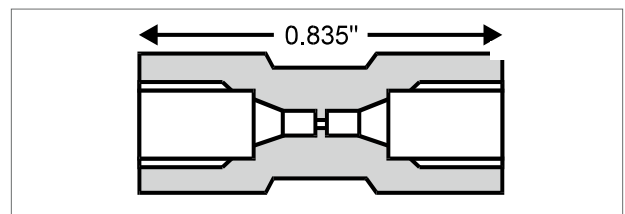
Description	P/N
Ferrule, 01, Stainless Steel, 10/pk	WAT005063
Compression Screw, 0.0625 in., 10/pk	WAT005070
Compression Fitting Plug, Stainless Steel, 5/pk	WAT005079
Rheodyne Ferrule, 10/pk	WAT007020
Ferrule, Stainless Steel	WAT022330
Ferrule, 1/16 in. O.D., PEEK	WAT021817
Compression Screw, Stainless Steel	WAT025313
Compression Fitting Plug, Stainless Steel	WAT025566
Compression Screws and Ferrules, 0.166 in., 5/pk	WAT025604
Compression Screws, 0.125 in., PEEK, 2/pk	WAT046-12
Compression Screw, Long, 1/16 in.	WAT021812
Compression Screw, Short, PEEK 1/16 in.	WAT021815
Extra Long Compression Screw, Stainless Steel, 10/pk	WAT060051
Finger Tight Poly Knob Used with Compression Screws Plus PEEK Ferrules	WAT021816
Tee, 0.0625 in. Compression Screw, Stainless Steel	WAT075215
Tubing Cap, Hex Stainless Steel	WAT084078
Union, 0.0625 in. Stainless Steel	WAT097332

PEEK UNIONS, TEES, AND CROSSES

Inert and biocompatible PEEK unions can withstand operating pressures as high as 6000 psi (420 bar). PEEK tees and crosses can withstand pressures as high as 10,000 psi (690 bar).

PEEK unions, tees, and crosses share these features:

- Connect any 1/16-inch tubing (PEEK, stainless steel, titanium, or Tefzel)
- Low dead volume
- 10–32 thread

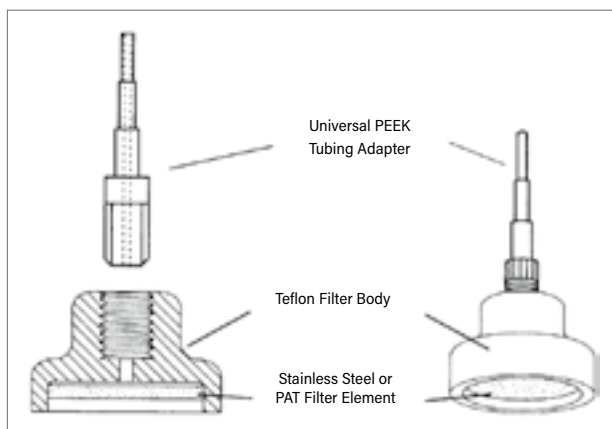


Description	P/N
PEEK Union with 2 PEEK Fingertight Nuts and Double Ferrules 1/16 in.	PSL613312
PEEK Union without Nuts and Ferrules 1/16 in.	PSL613313
PEEK TEE with One-piece Fingertight Fitting	PSL613317
PEEK CROSS with One-piece Fingertight Fitting	PSL613319
PEEK TEE without Fittings	PSL613318
PEEK CROSS without Fittings	PSL613320
PEEK One-piece Fingertight Fitting	186008714

Filters

LAST DROP MOBILE PHASE FILTERS

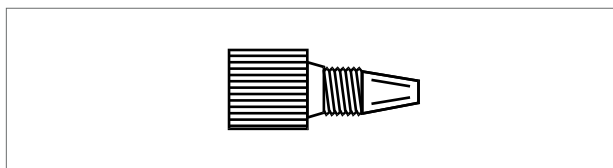
The Last Drop mobile-phase filter incorporates a flat filter element set parallel to the bottom of a reservoir. This design allows the filter to draw all but the last 2% of mobile phase from the reservoir without drawing air into the system. Last Drop filters are available with 316 L stainless steel or PAT (PEEK alloyed with Teflon) filter elements in inert Teflon housings. The top of the housing incorporates a PEEK tripod that fits into pump inlet lines with inner diameters of 1.5, 2.2, or 3.5 mm.



Description	P/N
Filter with 2 μ m Stainless Steel Filter	PSL901290

HANDILOK CTFE FITTINGS

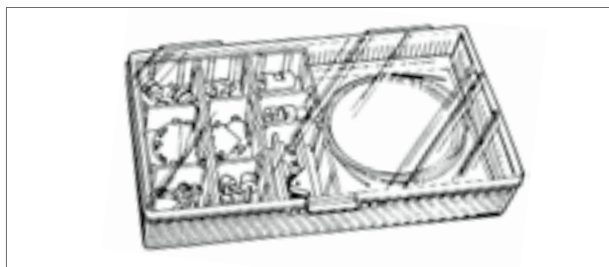
Handilok fittings can replace, without the need for tools, conventional compression fittings used with 1/16-inch tubing. Compatible with all internal fittings with a 10–32 thread, these fittings meet rigid high-pressure requirements, withstanding pressures greater than 4000 psi (280 bar).



Handilok Fittings	P/N
1/16 in. Fitting, 1/pk	PSL618021
1/16 in. Fitting, 10/pk	PSL618022

PEEK STARTER KIT

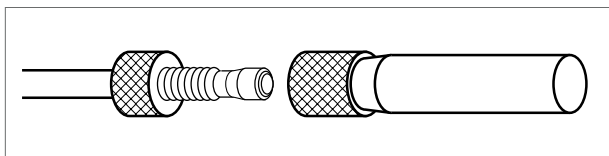
By replacing stainless steel parts, such as tubing, fittings, ferrules, mobile-phase filters, in-line filters, etc., you create a biocompatible, metal-free environment for samples and mobile phases. In a sturdy plastic case, the PEEK Starter Kit contains items that all biochromatographers will find helpful. Purchasing this kit earns you savings of 25% of the cost of purchasing its components individually.



Description	P/N
PEEK Starter Kit	PSL613321
Contains the following:	
PEEK Fingertight One-piece, 6/pk	
PEEK Handtight Nut, 4/pk	
PEEK Hex-head Nut, 4/pk	
PEEK Double Ferrules, 20/pk	
PEEK Tubing 1/16 in. \times 0.25 mm (1 \times 3 m)	
PEEK Tubing 1/16 in. \times 0.50 mm (1 \times 3 m)	
PEEK Union, 1/pk	
Elbow 90 Degrees, 2/pk	
Elbow 180 Degrees, 2/pk	
Guillotine Cutter, 1/pk	
PAT Mobile Phase Filter—"Last Drop", 1/pk	

PEEK BIOCOMPATIBLE MOBILE PHASE FILTER

The PEEK Biocompatible Mobile Phase Filter protects an HPLC pumping system against particulate matter in a mobile phase. Many macromolecules are fairly labile and require not only biocompatible chromatographs but also mobile-phase filters that are absolutely inert. These filters are designed from inert polymeric components, which effectively eliminate metal from the fluid path. With a porosity of 5 μ m, all fittings (including the inlet tube) are composed of perfectly inert PEEK.

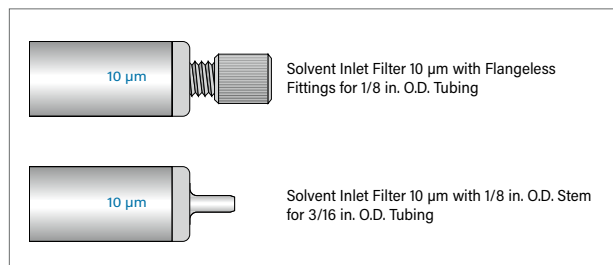


Description	P/N
Biocompatible Mobile Phase Filter	PSL901282

SOLVENT INLET FILTERS

It's good practice to always filter solvents, to avoid damaging the pump. Solvent inlet filters, with a porosity of 10 μm , provide the necessary pump protection, and their large surface area ensures long life without pump cavitation.

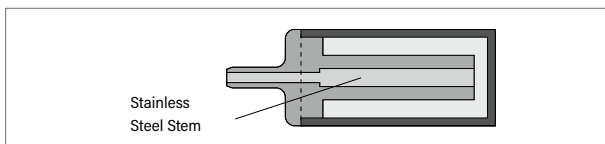
Filters should be changed periodically, depending on usage and mobile phase. Replacing the filter is easy; no tools are needed. The unique Plastictight male nut is screwed into the filter and tightened by hand. Finger tightening is sufficient; the Plastictight fitting holds without flanging.



BOTTOM-OF-THE-BOTTLE SOLVENT FILTERS

Our Bottom-of-the-Bottle Solvent Filter is designed after the original Bottom-of-the-Bottle replaceable filters. This unique filter is fitted with a stainless steel stem on top, to accommodate 1/16-inch (I.D.) tubing. A lower stem, which goes directly into the filter, reaches to within 0.06 inches of the Bottom-of-the-Bottle filters. The 10 μm filter can easily accommodate flow rates as high as 10 mL/min.

Description	P/N
Solvent Inlet Filter Kits	
Assy, Solvent Filter	WAT025531
Plastictight Fitting with Teflon Tubing 1/16 in. I.D. \times 1/8 in. O.D. \times 3 ft.	PSL613602
Replacement Filter 10 μm , 5/pk	PSL613604
Solvent Inlet Filters for General Use	
Solvent Inlet Filter 10 μm with 1/16 in. O.D. Stem for 1/8 in. O.D. Tubing	PSL613570
Solvent Inlet Filter 10 μm with Flangeless Fittings for 1/8 in. O.D. Tubing	PSL613578
Solvent Inlet Filters for Preparative HPLC	
Solvent Inlet Filter 10 μm with 1/16 in. O.D. Stem for 1/8 in. O.D. Tubing	PSL613607
Solvent Inlet Filter 10 μm with Flangeless Fittings for 1/8 in. O.D. Tubing	PSL613608
Solvent Inlet Filters for Waters HPLC Systems	
Solvent Inlet Filter 10 μm with 1/8 in. O.D. Stem for 3/16 in. O.D. Tubing	PSL613609



Bottom-of-the-Bottle Solvent Filter	P/N
Stainless Steel Filter Assembly	PSL613457


DID YOU KNOW...

Onsite Training

Invite us to visit your site at a time of your choosing to train your employees. We offer the choice of comprehensive training programs or "designer" programs tailored to meet the particular challenges of your work.

These are some additional benefits of choosing Waters onsite training:

- **Group training**—ideal for laboratories that must train groups of employees, from 5 to more than 500.
- **Efficiency**—for a flat fee, we can train a maximum number of employees in new skills or technology in minimal time.
- **Home advantage**—train your entire group in a familiar, confidential environment.
- **Relevance**—encourage synergy in the learning experience, the effect of lectures and hands-on sessions that relate to your specific laboratory operations.
- **Economy**—eliminate travel-related costs and minimize time away from the laboratory.
- **Expertise**—our certified instructors are not only experts, they're talented teachers who know how to deliver maximum skills in the allotted time.

 Visit [waters.com/onsite](https://www.waters.com/onsite) to request onsite training to meet your specific needs.

Ordering on Waters.com Has Never Been Easier

Harness the Benefits

Waters.com is the easy, convenient and personalized way to get the products you need for your lab.



Available 24/7 from desktop or mobile; ordering online avoids errors and delays that can come with manual ordering. This saves you time, so you can stay focused on your science.



Find exactly what you need with robust search, smart filtering and rich product information. Sign in for easy access to real-time inventory availability and company-specific pricing.



Exclusive access to online only discounts and promotions that save you money.



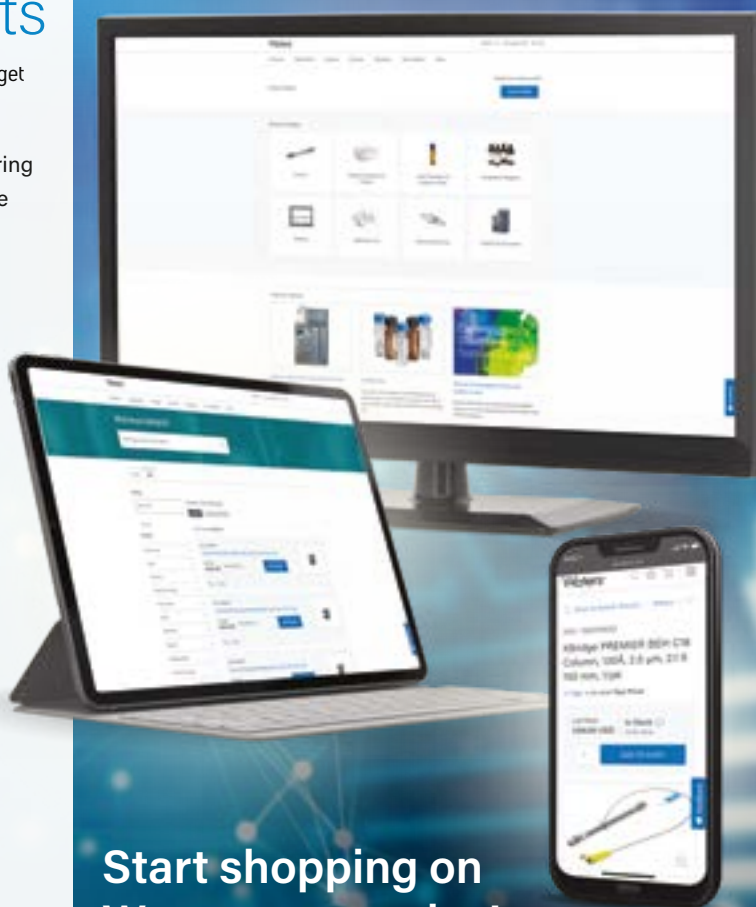
Use Quick Order to enter items by part number or to add multiple items from an uploaded spreadsheet.



Require a quote before you order? The eQuotes feature provides a price quote automatically for you to download or share – including your corporate discount, if available.



Reorder the products you use most; and get updated status on any of your orders with easy access to your personal Order History page.



Start shopping on
Waters.com today!

Visit waters.com/shop

To register, please visit waters.com/createaccount