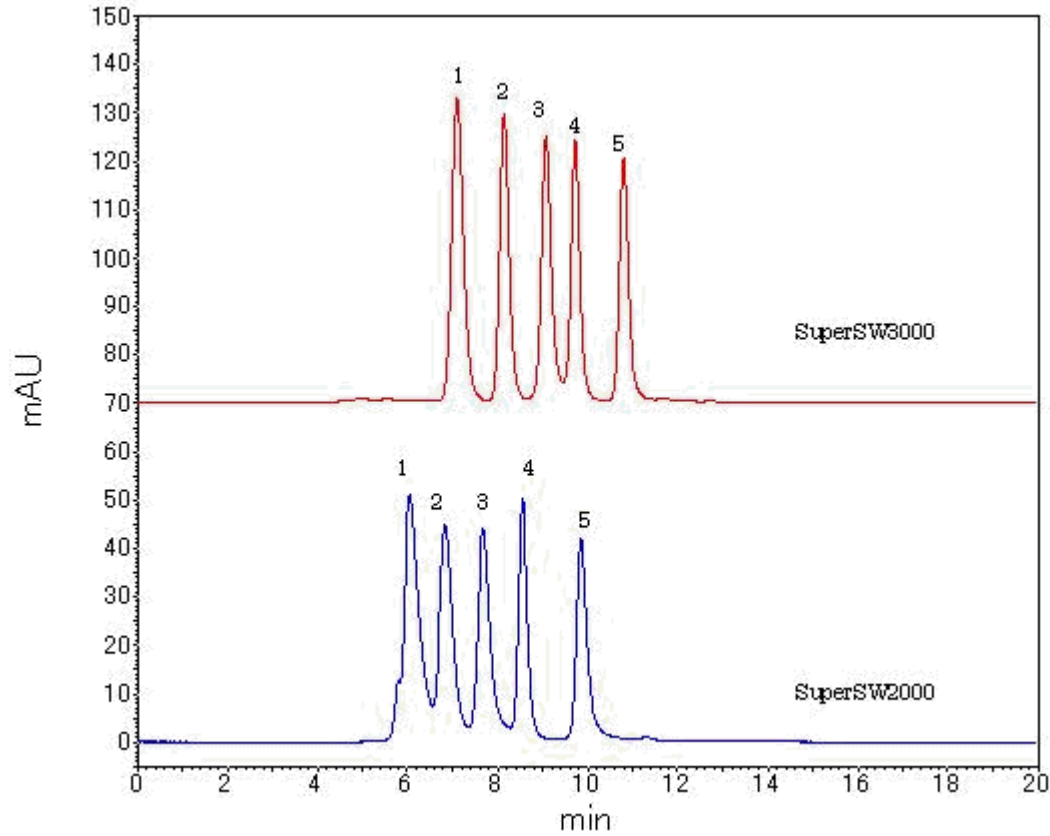


Application Title:

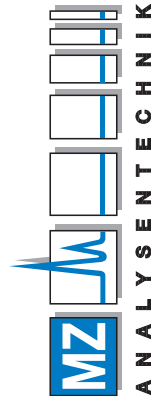
Separation of standard protein mixture by size exclusion chromatography (2).

Compound:

1) Glutamate dehydrogenase (yeast, MW.:290KDa); 2) Lactate dehydrogenase (pig heart, M.W.:142KDa); 3) Enolase (yeast, M.W.:67KDa); 4) Myokinase (yeast, M.W.:32KDa); 5) Cytochrome C (horse heart, M.W.:12.4KDa)



AUTHORIZED DISTRIBUTOR
 MZ-Analyse-technik GmbH, Barcelona-Allee 17 • D-55129 Mainz
 Tel +49 6131 880 96-0, Fax +49 6131 880 96-20
 e-mail: info@mz-at.de, www.mz-at.de

**Chromatographic conditions**

Column: [TSKgel SuperSW2000](#), P/N 18674, 4 µm, 4.6 mm ID × 30 cm × 1

Column 2: [TSKgel SuperSW3000](#)

Mobile Phase: 20 mmol/L phosphate buffer + 0.3 mol/L NaCl (pH 7.0)

Flow Rate: 0.35 mL/min

Detection: UV/VIS @ 280 nm

Temperature: 25 °C

Injection Volume: 2 µL

Sample(s): Standard protein mixture

Sample Load: 1) 1.83 g/L, 2) 1.58 g/L, 3) 1.35 g/L, 4) 1.31 g/L, 5) 1.25 g/L

Instrument: Agilent 1120 Compact LC