



Application Note

TSKgel G3000SW_{XL} COLUMNS FOR THE REPRODUCIBLE ANALYSIS OF mAbs AND PROTEINS

INTRODUCTION

Gel Filtration Chromatography (GFC) is popular among biochemists for the analysis of proteins and monoclonal antibodies. With 5 µm particles and 250 Å pores, TSKgel G3000SW_{XL} columns are an excellent choice for protein separations. TSKgel SW_{XL} columns feature rigid spherical silica particles, the surface of which has been shielded from interacting with proteins by chemical derivatization with ligands containing proprietary diol functional groups. Tosoh's proprietary surface chemistry provides an inertness, which allows for minimal adsorption of proteins and other protein aggregates.

TSKgel G3000SW_{XL} columns also feature high pore volume per unit column volume, low sample adsorption, excellent column efficiency, and very well-defined pore size distribution. All of these factors contribute to unsurpassed sample resolution. This application note reports the analysis of monoclonal antibodies (mAb) using a TSKgel G3000SW_{XL}, 5 µm, 7.8 mm ID × 30 cm column, demonstrating the effectiveness of the proprietary surface chemistry.

EXPERIMENTAL CONDITIONS

Analyses were carried out using an Agilent 1200 HPLC system.

Column: TSKgel G3000SW_{XL}, 5 µm, 7.8 mm ID × 30 cm; lot T03294-19S
 Mobile phase: 100 mmol/L KH₂PO₄/Na₂HPO₄, pH 6.8, 100 mmol/L Na₂SO₄ + 0.05% NaN₃
 Flow rate: 1.0 mL/min
 Detection: UV @ 280 nm
 Temperature: ambient
 Injection vol.: 20 µL
 Sample: monoclonal antibody (mAb-02)

High purity HPLC grade Sigma Aldrich chemicals were used in this study. All the standards and samples were filtered through a 0.45 µm membrane before injecting into the column.

RESULTS AND DISCUSSION

Figure 1 shows the overlay of the first two consecutive injections of a monoclonal antibody (mAb-02) onto a TSKgel G3000SW_{XL} column. This brand new column was not pre-conditioned prior to this analysis. The monomer peak is baseline resolved from the dimer peak and the aggregate peaks. The overlay does not

ANALYSIS OF mAb-02 USING A TSKgel G3000SW_{XL} COLUMN - AN OVERLAY OF THE FIRST TWO INJECTIONS

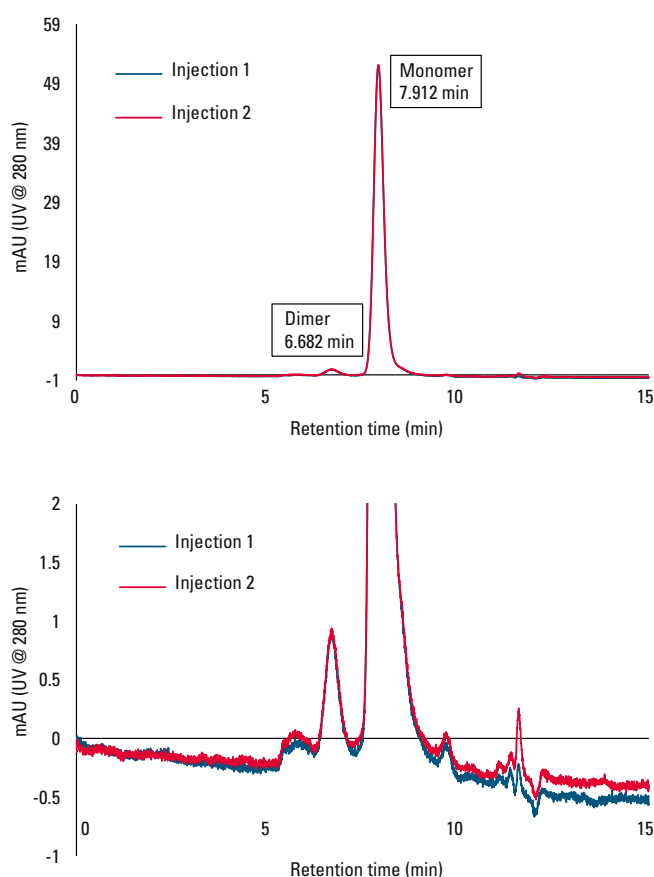


Figure 1

ANALYSIS OF mAb-02 USING A TSKgel G3000SW_{XL} COLUMN - AN OVERLAY OF THE FIRST TWO INJECTIONS

MAB-02	RT (min)		PEAK AREA (mAU*S)	
	Dimer	Monmer	Dimer	Monomer
Injection 1	6.676	7.913	23.7	1029
Injection 2	6.682	7.912	24.2	1029.8

Table 1

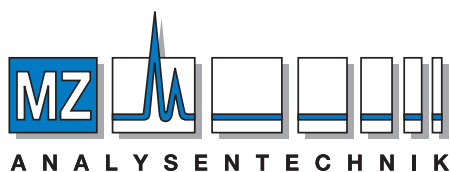
show any difference in the monomer and dimer peak areas of the first and second injections. There is no shift in retention time between the two consecutive injections and no difference in peak height is noticeable. These results clearly demonstrate that there was not any adsorption of the monoclonal antibody onto the column.

Table 1 summarizes the results of the analysis of a monoclonal antibody used in this study.

Similar results as those detailed above were obtained with another TSKgel G3000SW_{XL} column from a different lot (T03061-18S). The number of theoretical plates in the analysis of mAb-02 was 4125 and 4100 for the monomer peak for column lots 18S and 19S respectively. Both of the columns were also tested using a standard protein mixture containing thyroglobulin (0.5 g/L), γ -globulin (1 g/L), ovalbumin (1 g/L), ribonuclease A (1.5 g/L), and PABA (0.01 g/L) and compared with the recommended values mentioned in the operating conditions and specifications (OCS) sheet supplied with the column (data not shown here). The efficiency, as measured by the number of theoretical plates for PABA (para-amino benzoic acid), was >32,000 for the columns from both lots. This is well above the quality control specification value of >20,000. The asymmetry factor was 1.18, which is well within the quality control specification range of 0.7-1.6. Repeated injections produced excellent reproducibility. Preliminary results with mAb-01, human IgG, and mouse monoclonal IgG also did not show any difference between two consecutive injections using the TSKgel G3000SW_{XL} columns from lots 18S and 19S (data to be published elsewhere).

CONCLUSIONS

As demonstrated in this application note, two consecutive injections on brand new, non-preconditioned TSKgel G3000SW_{XL} columns did not show any difference in monomer and dimer peak areas, retention times, and peak heights with the analysis of a monoclonal antibody. The TSKgel G3000SW_{XL} columns did not show any adsorption of the monoclonal antibody, leading to accurate quantitation of the mAb content.



AUTHORIZED DISTRIBUTOR

MZ-Analysentechnik GmbH, Barcelona-Allee 17 • D-55129 Mainz

Tel +49 6131 880 96-0, Fax +49 6131 880 96-20

e-mail: info@mz-at.de, www.mz-at.de