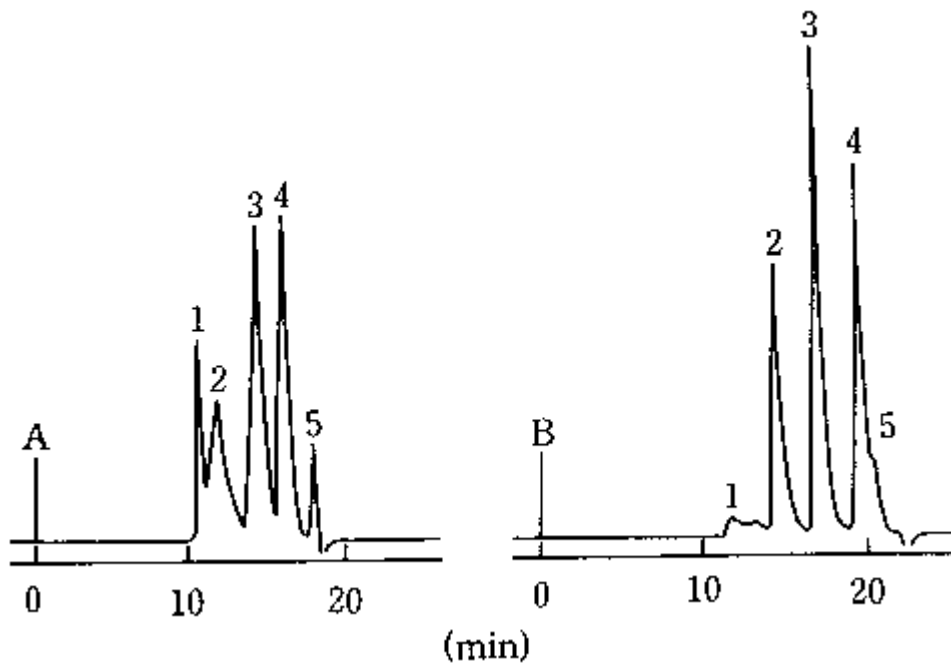


Application Title:

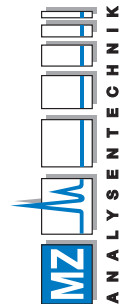
Separation of Peptides Mixture

Compound:

1) Myoglobin; 2) Glucagon; 3) Luteinizing hormone-releasing hormone (LR-RH);
4) Thyrotropin releasing hormone (TRH); 5) Glycine



AUTHORIZED DISTRIBUTOR
MZ-Analysentechnik GmbH, Barcelona-Allee 17 • D-55129 Mainz
Tel: +49 6131 880 96-0, Fax: +49 6131 880 96-20
e-mail: info@mz-at.de, www.mz-at.de

**Chromatographic conditions**

Column: [TSKgel G2500PW_{XL}](#), P/N 08020, 7 µm, 7.8 mm ID × 30 cm × 1

Column 2: [TSKgel G2000SW_{XL}](#), P/N 08540, 5 µm, 7.8 mm ID × 30 cm × 1

Mobile Phase: Acetonitrile / 0.1% TFA = 45 / 55

Flow Rate: 0.5 mL/min

Detection: UV/VIS @ 215 nm

Temperature: 25 °C

Sample(s): Standard Peptides mixture

Reference: TOSOH Separation Report

Title: Separation of peptides by size-exclusion chromatography on TSKgel

Number: 73

Page start: 5

Page end: 5

Comments: Chromatogram (A) TSKgel G2500PW_{XL}
Chromatogram (B) TSKgel G2000SW_{XL}