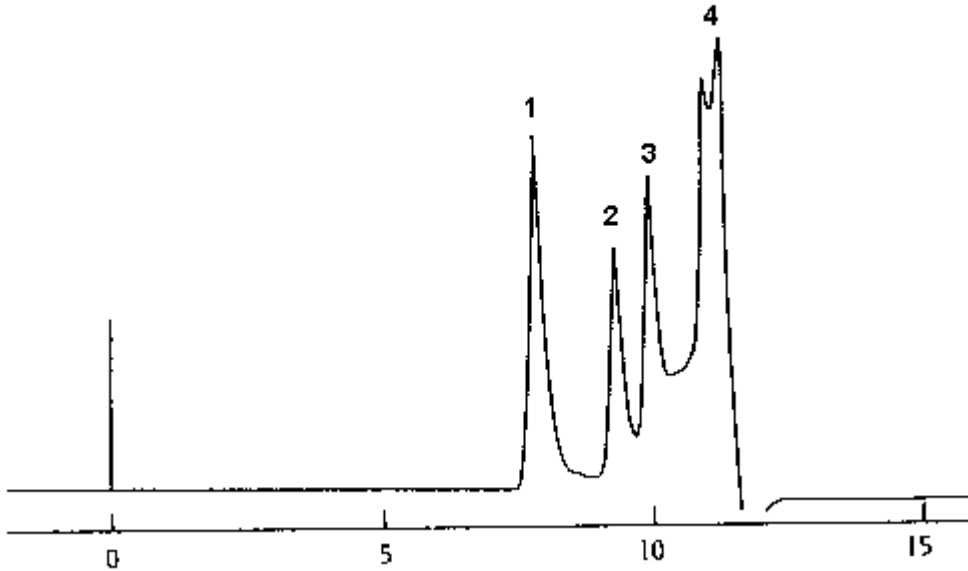


Application Title:

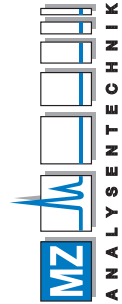
Separation of polypeptides by size-exclusion chromatography

Compound:

1) Cytochrome C; 2) Insulin; 3) Alpha-endorphin; 4) Leu-enkephalin



AUTHORIZED DISTRIBUTOR
 MZ-Analysentechnik GmbH, Barcelona-Allee 17 • D-55129 Mainz
 Tel: +49 6131 880 96-0, Fax: +49 6131 880 96-20
 e-mail: info@mz-at.de, www.mz-at.de

**Chromatographic conditions**

Column: [TSKgel G2000SW_{XL}](#), P/N 08540, 5 µm, 7.8 mm ID × 30 cm × 1

Mobile Phase: 40% acetonitrile / TFA = 99.95 / 0.05

Flow Rate: 1 mL/min

Detection: UV/VIS @ 215 nm

Temperature: 25 °C

Sample(s): Standard

Reference: TOSOH Separation Report

Title: Introduction of TSKgel SWXL Series

Number: 46

Page start: 7

Page end: 7