

2-3. Saccharides and Sugar Alcohols

Amino columns (4.6mmID x 250mm) and ligand exchange mode columns are one of the official methods of analysis for sugar alcohols. (Fig. 2-15)

Sugar Alcohol (1)	Sugar Alcohol (2)
Column : A column packed with a silica or polymer gel bounded amino (propyl) group (4.6mmID x 250mm) → Shodex Asahipak NH2P-50 4E Eluent : CH ₃ CN/H ₂ O = 75/25 Flow Rate : 1.0mL/min Detector : RI Column Temp.: Room Temp. Injection Vol. : 20μL	Column : A column packed with sulfonated poly styrene gel (Pb or Ca ligand) (7.8-8.0mmID x 300mm) → Shodex SUGAR SP0810, SC1011 Eluent : H ₂ O Flow Rate : 0.6mL/min Detector : RI Column Temp.: 85°C Injection Vol. : 5μL
Japan's Nutritional Facts Labeling Standards Ver. 3 (Japan Health Food Authorization)	

Fig. 2-15 Analysis Condition of Sugar Alcohols

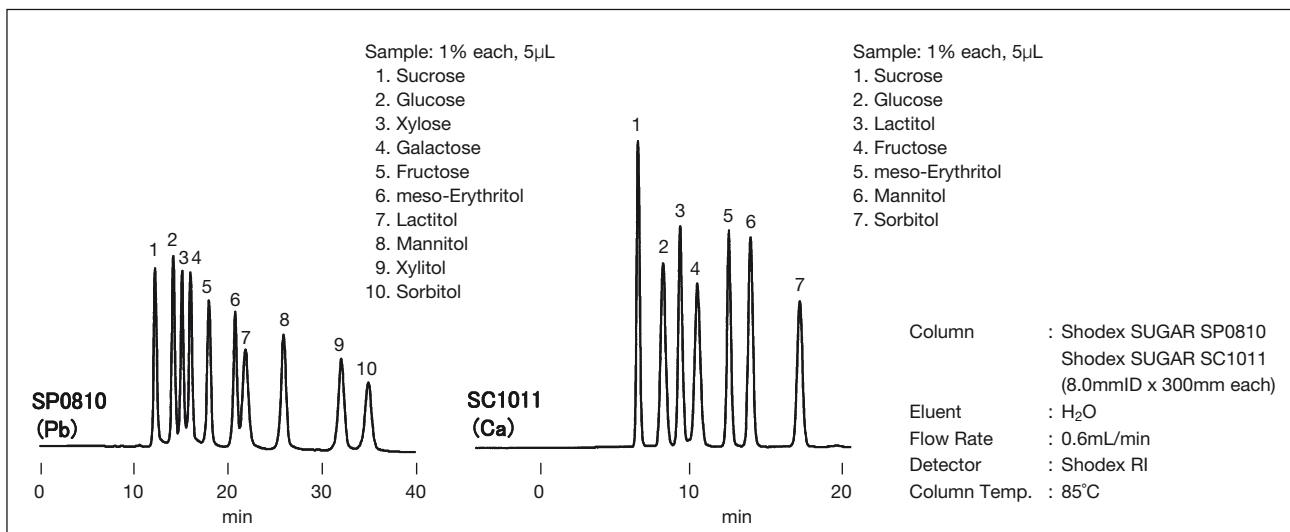


Fig. 2-16 Standard Saccharides and Sugar Alcohol with SP0810, SC1011

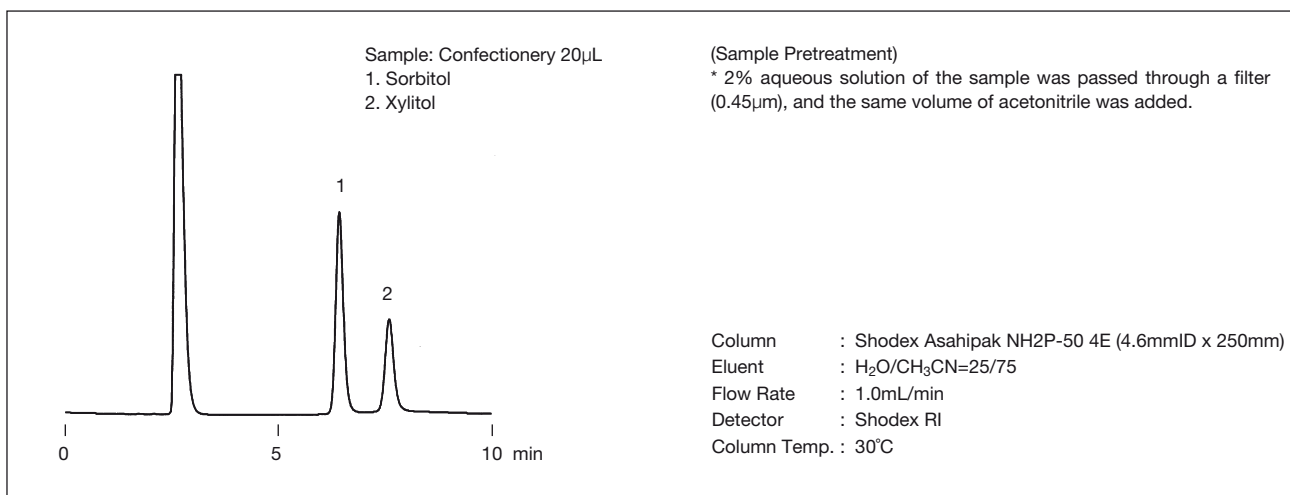


Fig. 2-17 Xylitol in Confectionery