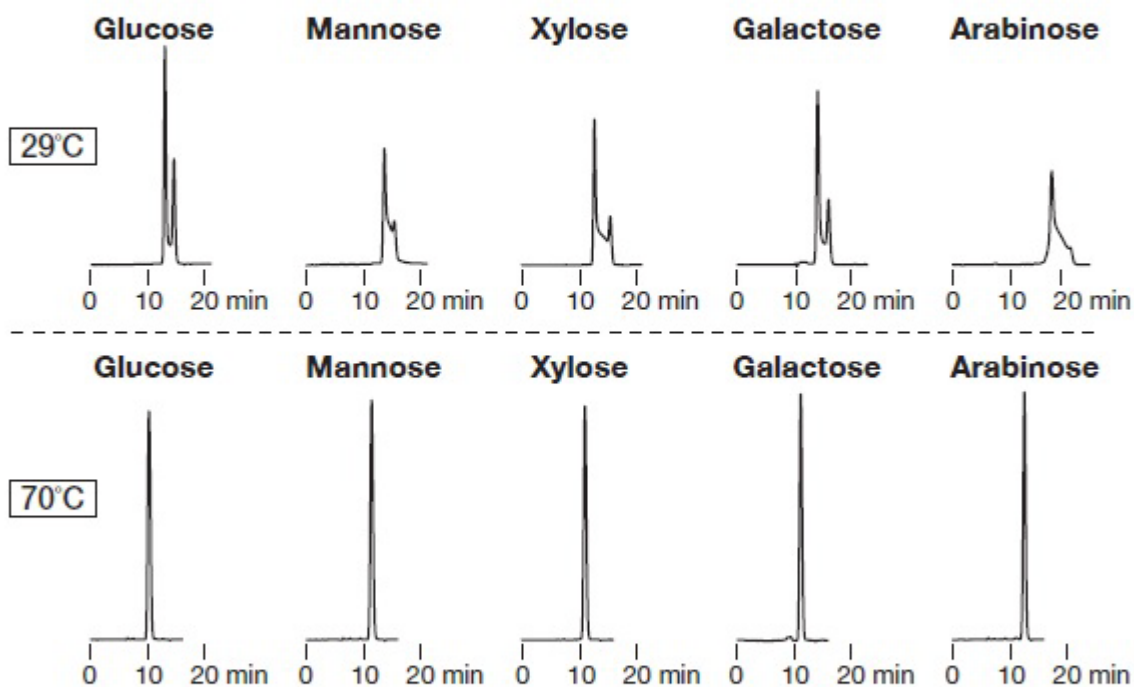


Anomer separation of saccharides

Temperature can affect chromatograms when separating saccharide anomers. When using a SUGAR column to analyze saccharides, the analysis at high temperatures would suppress the influence of anomer separation, resulting in better chromatograms.

Sample :
0.5% each, 10 μ L



Column : Shodex SUGAR SC1011
Eluent : H₂O
Flow rate : 0.7mL/min
Detector : RI
Column temp. : 29°C, 70°C