

**Shodex**  
HPLC Columns



menu

Downloads

Operation Manual /

Certificate of

Analysis

Contact Us

Search within the Site

Products

Applications

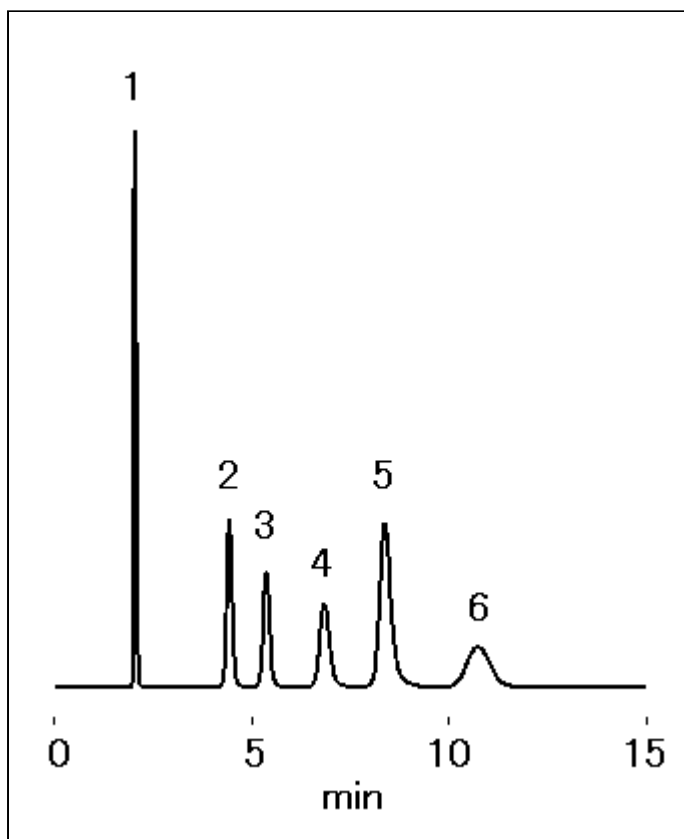
Distributors

Support

Language Global Sitemap

[HPLC Applications](#) / 
 [Nucleobases \(1\) \(DE-413\)](#) / 
 [Nucleic Acids](#) / 
 [Nucleobases, Nucleosides and Nucleotides](#) / 
 [Nucleobases \(4\) \(DE-413\)](#)

Six components were completely separated using RSpak DE-413 (a column for reversed phase chromatography).



Sample : 0.01 % each, 5  $\mu$ L

1. Cytosine
2. Uracil
3. Hypoxanthine
4. Guanine
5. Thymine
6. Adenine

Column : Shodex RSpak DE-413 (4.6 mm I.D. x 150 mm)  
 Eluent : 0.05 M  $\text{KH}_2\text{PO}_4$  aq.  
 Flow rate : 1.0 mL/min  
 Detector : UV (260 nm)  
 Column temp. : 25  $^\circ\text{C}$