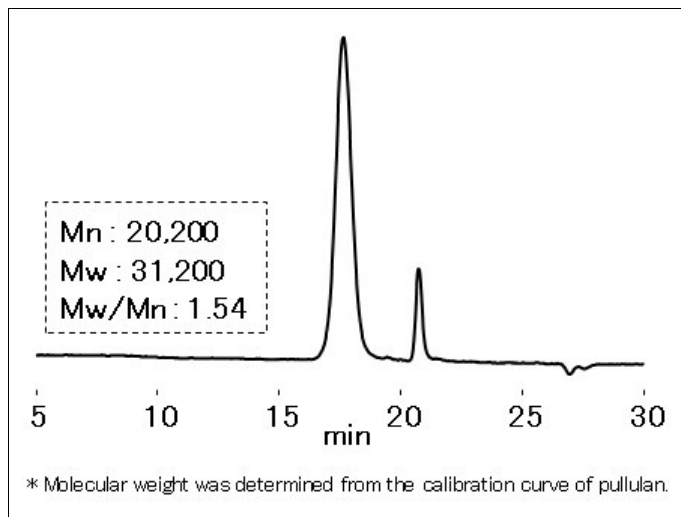
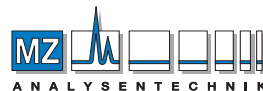


Heparin (2) (SB-806M HQ)

Heparin sodium was analyzed using OHPak SB-806M HQ, a column for aqueous SEC (GFC).



Sample : 50µL
Heparin sodium 0.1%



AUTHORIZED DISTRIBUTOR

MZ-Analyse-technik GmbH
Barcelona-Allee 17 • D-55129 Mainz
Tel +49 6131 880 96-0
Fax +49 6131 880 96-20
e-mail: info@mz-at.de
www.mz-at.de

Columns : Shodex OHPak SB-806M HQ (8.0mm I.D. x 300mm) x 2
Eluent : 0.1M NaCl aq.
Flow rate : 1.0mL/min
Detector : Shodex RI
Column temp. : 40°C