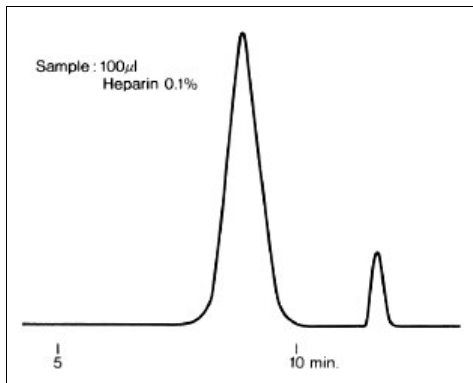
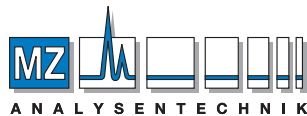


## Heparin (1) (SB-804 HQ)

Heparin was analyzed using OHPak SB-804 HQ ( a column for GFC separation ).



Sample : Heparin



**AUTHORIZED DISTRIBUTOR**

MZ-Analysentechnik GmbH  
Barcelona-Allee 17 • D-55129 Mainz  
Tel +49 6131 880 96-0  
Fax +49 6131 880 96-20  
e-mail: [info@mz-at.de](mailto:info@mz-at.de)  
[www.mz-at.de](http://www.mz-at.de)

Column : Shodex OHPak SB-804 HQ (8.0mmI.D. x 300mm)  
Eluent : 0.1M NaCl  
Flow rate : 1.0mL/min  
Detector : Shodex RI  
Column temp. : 40°C