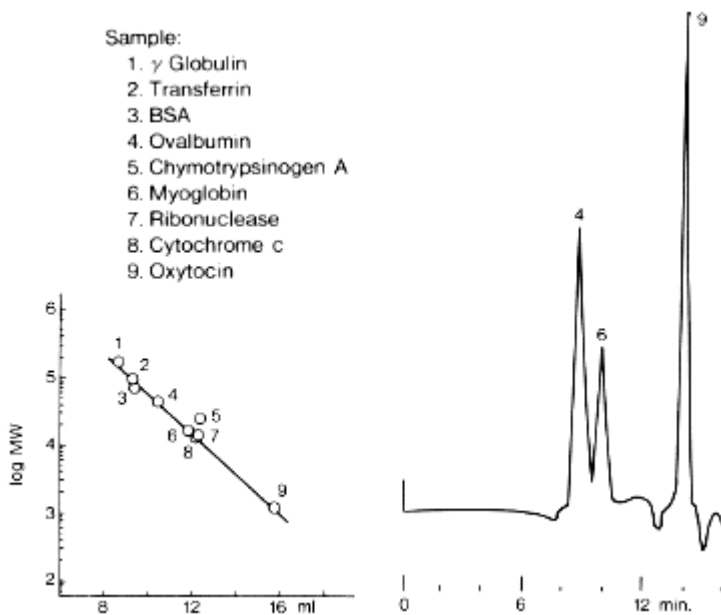


Standard Proteins (12) (GS-320 7G)

When an eluent with a relatively high salt concentration is used for Asahipak GS series (multimode columns), substances are eluted in decreasing order of molecular weight as it is the GFC mode which function mainly. Asahipak [GS-320](#) is suitable for the analysis of proteins and peptides with molecular weight of less than 100,000.

[GS-320 7G](#) is an old type of [GS-320 HQ](#).



Sample :

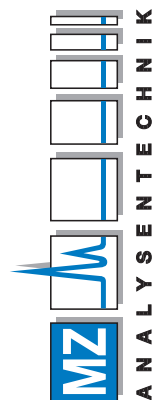
1. [gamma Globulin](#)
2. [Transferrin](#)
3. [BSA](#)
4. [Ovalbumin](#)
5. [Chymotrypsinogen A](#)
6. [Myoglobin](#)
7. [Ribonuclease](#)
8. [Cytochrome c](#)
9. [Oxytocin](#)

Column : Shodex Asahipak GS-320 7G (7.6mmID*500mm)
Eluent : 0.1M Sodium phosphate buffer(pH7.0) + 0.3M NaCl
Flow rate : 1.0mL/min
Detector : UV(210nm)
Column temp. : Room temp.

H.Wada et al., J. Chromatogr., **320** (1985) 369.

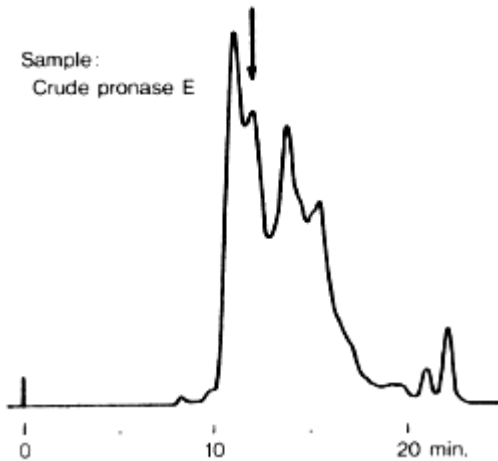
AUTHORIZED DISTRIBUTOR

MZ-Analysentechnik GmbH, Barcelona-Allee 17 • D-55129 Mainz
Tel +49 6131 880 96-0, Fax +49 6131 880 96-20
e-mail: info@mz-at.de, www.mz-at.de



Crude Pronase E

Crude pronase E was analyzed using Asahipak [GS-320 7G](#) (a multimode column).
GS-320 7G is an old type of [GS-320 HQ](#).



Sample : Crude [pronase E](#)

Column : Shodex Asahipak GS-320 7G (7.6mmID*500mm)

Eluent : 1/15M KH_2PO_4 + 1/15M Na_2HPO_4 (pH7.4)

Flow rate : 1.0mL/min

Detector : UV(210nm)

Column temp. : Room temp.

H. Wada et al., J. Chromatogr. , **320** (1985) 369