

Shodex
HPLC Columns



menu

Downloads
Operation Manual /
Certificate of
Analysis

Contact Us

Search within the Site

Products
Applications
Distributors
Support

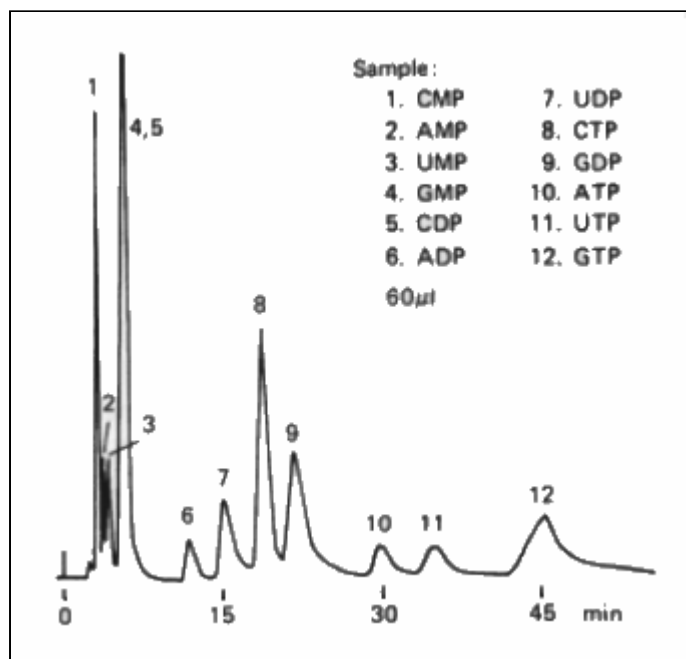
Language GlobalSitemap

Nucleotides (8) (DEAE-825)

[Nucleotides \(8\) \(DEAE-825\)](#)

[Nucleotides \(8\) \(DEAE-825\)](#)

Nucleotides were analyzed using IEC DEAE-825 (a column for weak anion exchange chromatography).



Sample :

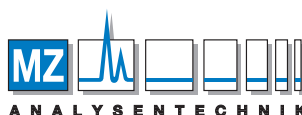
1. CMP
2. AMP
3. UMP
4. GMP
5. CDP
6. ADP
7. UDP
8. CTP
9. GDP
10. ATP
11. UTP
12. GTP

Column : Shodex IEC DEAE-825 (8.0 mm I.D. x 75 mm)
 Eluent : (A); 0.1 M NaH₂PO₄ aq./CH₃CN=80/20
 (B); 0.5 M NaH₂PO₄ aq./CH₃CN=80/20
 Linear gradient: 0 min to 60 min, (A) to (B)
 Flow rate : 1.0 mL/min
 Detector : UV (260 nm)
 Column temp. : 25 °C

Sample Name Index



Adenosine diphosphate, ADP



AUTHORIZED DISTRIBUTOR

MZ-Analysentechnik GmbH, Barcelona-Allee 17 • D-55129 Mainz
 Tel +49 6131 880 96-0, Fax +49 6131 880 96-20
 e-mail: info@mz-at.de, www.mz-at.de