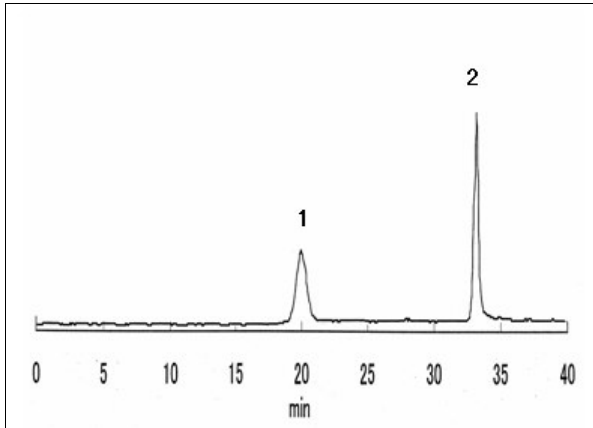


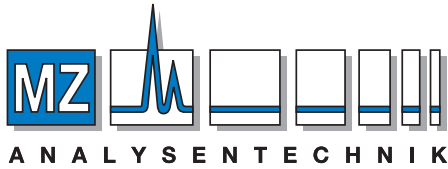
## Glyphosate and Glufosinate

Glyphosate and glufosinate which are phosphorus-containing amino acid type herbicides were analyzed with IC/ICP-MS using IC SI-90 4E (a column for anion chromatography).



Sample : 20 $\mu$ L  
1. Glufosinate  
2. Glyphosate

Column : Shodex IC SI-90 4E (4.0mm I.D. x 250mm)  
Eluent : (A) 0.3mM NaOH aq.  
(B) 0.3mM NaOH + 20mM Na<sub>2</sub>CO<sub>3</sub> aq.  
Gradient:  
0 to 20min, A/B=95/5  
20 to 30min, A/B=95/5 to 50/50  
30 to 40min, A/B=50/50  
Flow rate : 1.0mL/min  
Suppressor : Dionex AMMS-ICS II  
Detector : ICP/MS, P at m/z=31  
Column temp. : Room temp.



### AUTHORIZED DISTRIBUTOR

MZ-Analysentechnik GmbH, Barcelona-Allee 17 • D-55129 Mainz

Tel +49 6131 880 96-0, Fax +49 6131 880 96-20

e-mail: [info@mz-at.de](mailto:info@mz-at.de), [www.mz-at.de](http://www.mz-at.de)