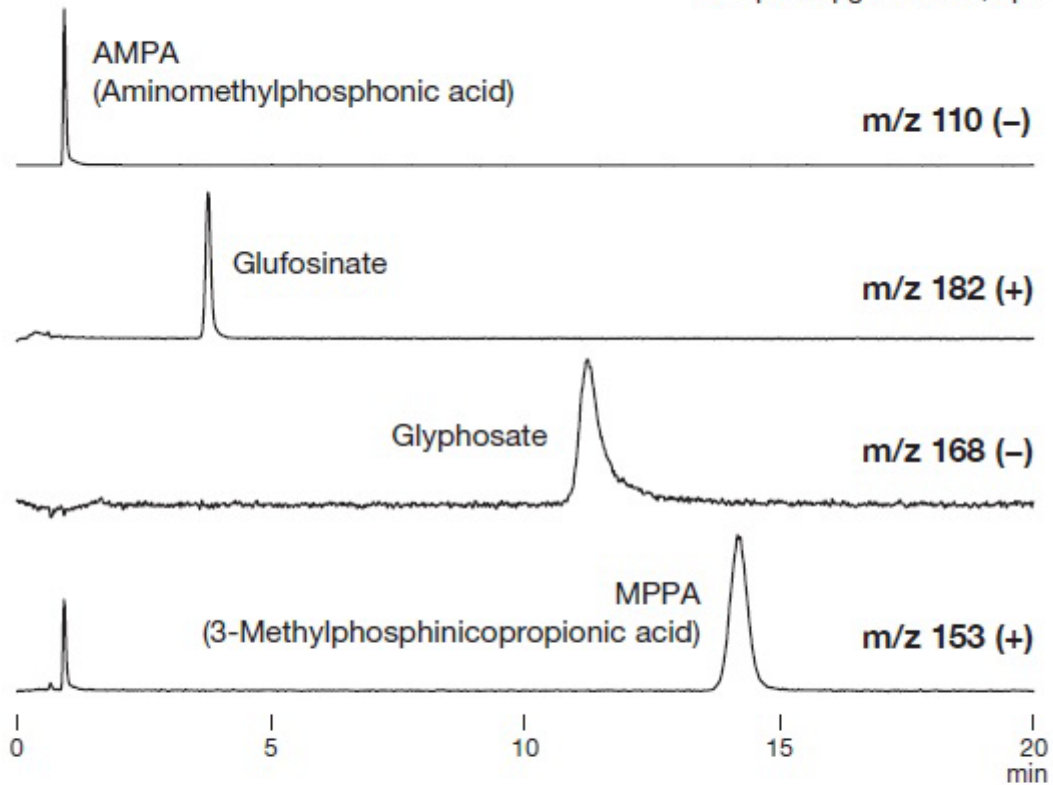


## LC/MS analysis of glyphosate and glufosinate

Sample : 1 $\mu$ g/mL each, 5 $\mu$ L



**Column** : Shodex HILICpak VT-50 2D  
**Eluent** : H<sub>2</sub>O/1% HCOOH aq./CH<sub>3</sub>CN=70/20/10  
**Flow rate** : 0.3mL/min  
**Detector** : ESI-MS (SIM)  
**Column temp.** : 40°C