



menu

Downloads

 Operation Manual /
 Certificate of Analysis

Contact Us

Products

Applications

Distributors

Support

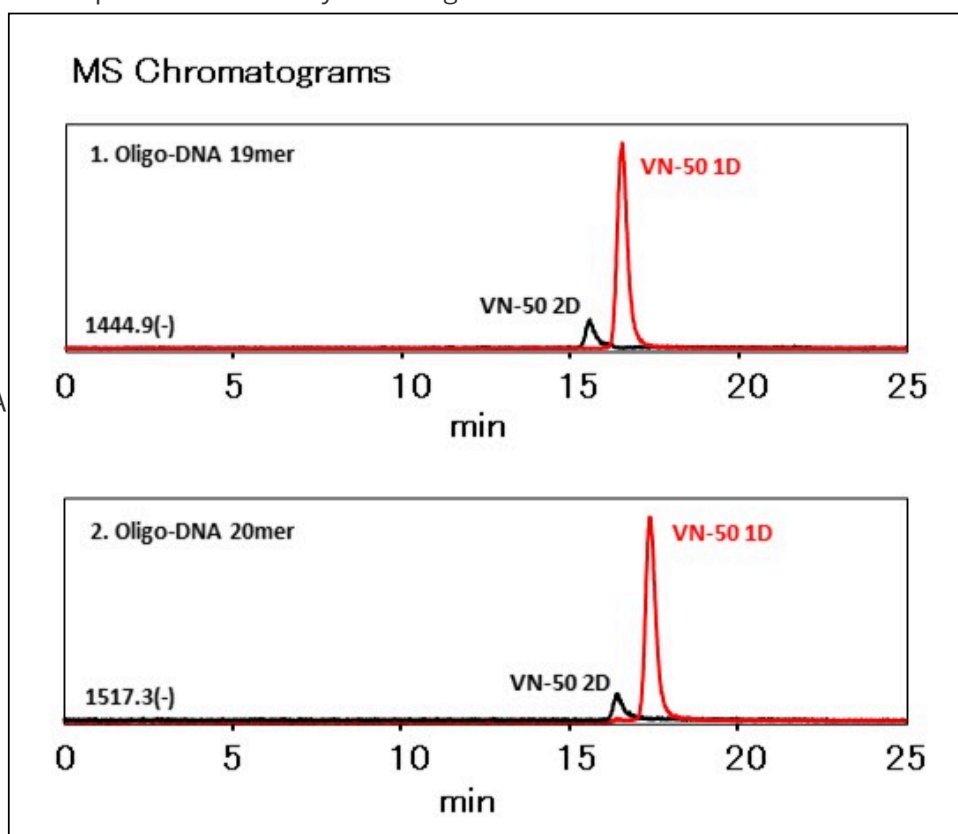
Language GlobalSitemap

High Sensitive Analysis of Synthetic Oligo-DNAs by LC/MS (Comparison between VN-50 1D and

Synthetic oligo-DNAs of 19 and 20mer were analyzed using HILICpak VN-50 1D and VN-50 2D. The VN-50 1D with an inner diameter of 1.0 mm improves the sensitivity of LC/MS by lowering the flow rate. A simple analytical condition used in this application does not require ion-pair reagents nor highly concentrated salts for the separation and analysis of oligo-DNAs.

Sample: 0.4 μ L0.05 mg/mL each (in
 $H_2O/CH_3CN=50/50$)

- Synthesized oligo-DNA
19mer(crude)
TTTCATGGTTCTTCGGAA
- Synthesized oligo-DNA
20mer(crude)
CTTTCATGGTTCTTCGGAA



Column	: Shodex HILICpak VN-50 1D (1.0 mm I.D. x 150 mm) Shodex HILICpak VN-50 2D (2.0 mm I.D. x 150 mm)
Eluent	: (A); 50 mM $HCOONH_4$ aq. / (B); CH_3CN Linear gradient ; (B %) 65 to 50 % (0 to 20 min), 50 to 65 % (20 to 20.01 min), 65 % (20.01 to 25 min)
Flow rate	: 0.1 mL/min (VN-50 1D) 0.3 mL/min (VN-50 2D)
Detector	: ESI-MS (SIM Negative)
Column temp.	: 40 $^{\circ}C$