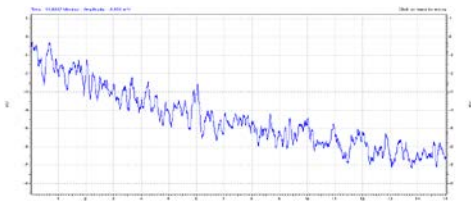


„Simply the best...“ - HILIC - Asahipak NH2P – the polymer-based Amino column

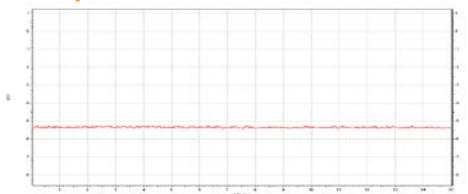
Comparison of silica-based versus polymer-based Amino columns

Silica Baseline



Column: Silica-based NH2 from competitor
(250 x 4.0 mm, 5 µm)
Noise: 1-2 mV, high drift

Polymer baseline



Column: Polymer-based Shodex Asahipak NH2P-50
(250 x 4.6 mm, 5 µm)
Noise: 0.1 mV, very low drift

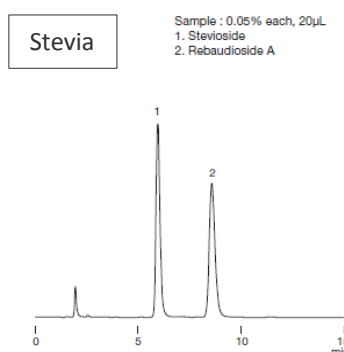
Eluent: isocratic, 25 % Water/
75 % Acetonitrile
Flow rate: 1.0 mL/min
Detection: ELSD
Temperature: 40° C

Advantages

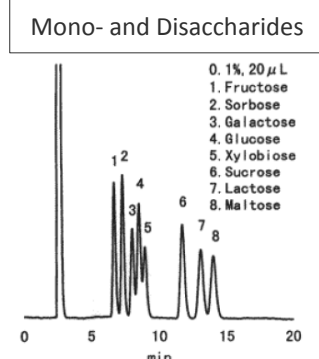
- Longer lifetime and extended stability (base material: polyvinyl alcohol)
- Wider pH range, can be used under alkaline conditions (pH 2-13)
- Better for LC-MS and ELSD (lower column bleeding)

Typical Applications

- Sugar Analysis: Mono-, Di- and Oligosaccharides, amino sugars, sugar alcohols
- Polar substances like water-soluble vitamins
- Food analysis



Column: Shodex Asahipak NH2P-50 4E
(250 x 4 mm, 5 µm)
Eluent: 25 % water/ 75 % Acetonitrile
Flow rate: 1.0 mL/min
Detection: UV (210 nm)
Temperature: 30° C



Column: Shodex Asahipak NH2P-50 4E
(250 x 4 mm, 5 µm)
Eluent: 25 % water/ 75 % Acetonitrile
Flow rate: 1.0 mL/min
Detection: Shodex RI
Temperature: 30° C

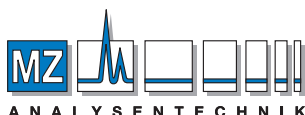
Available Dimensions

Standard: Asahipak NH2P-50: ID 4.6 mm with 50, 150, 250 mm length + guard (particle size 5 µm)

NEW for LC-MS: Asahipak NH2P-40: ID 2.0 mm with 50, 150, 250 mm length + guard (particle size 4 µm)



www.shodex.de



AUTHORIZED DISTRIBUTOR

MZ-Analysentechnik GmbH
Barcelona-Allee 17 • D-55129 Mainz
Tel +49 6131 880 96-0
Fax +49 6131 880 96-20
e-mail: info@mz-at.de
www.mz-at.de

Shodex™

Phone: +49 (0)89 - 9399 6237

Email: info@shodex.de

www.shodex.de