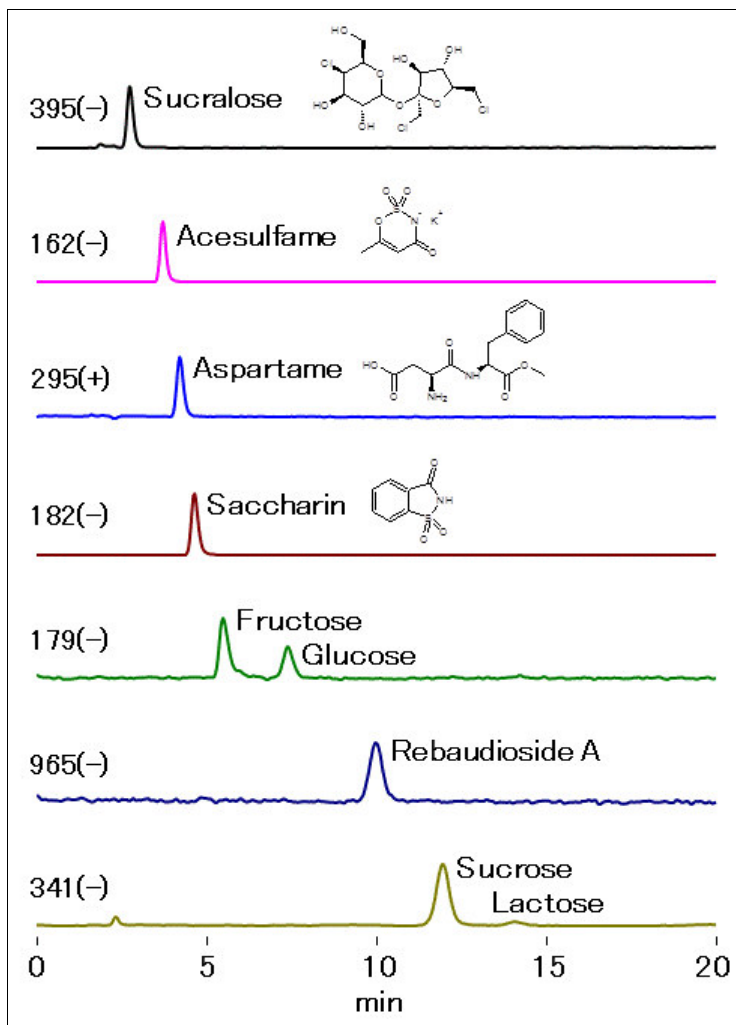


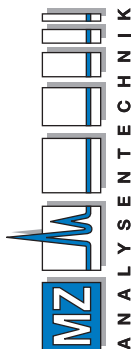
LC/MS Analysis of Various Sweeteners (NH2P-40 2D)

Various sweeteners were analyzed using Asahipak NH2P-40 2D, a polymer-based amino column, with LC/MS/MS detection. Anion substances can be eluted under alkaline conditions. Furthermore, alkaline conditions promote the deprotonation of hydroxyl groups at the time of ionization. Therefore, alkaline conditions are suitable for high sensitive detection of substances with hydroxyl groups such as saccharides under the negative mode.



Sample : 5µL
50ng/mL each
(in H₂O/CH₃CN=1/3)
Sucralose
Acesulfame
Aspartame
Saccharin
Fructose
Glucose
Rebaudioside A
Sucrose
Lactose

AUTHORIZED DISTRIBUTOR
MZ-Analysentechnik GmbH, Barcelona-Allee 17• D-55129 Mainz
Tel +49 6131 880 96-0, Fax +49 6131 880 96-20
e-mail: info@mz-at.de, www.mz-at.de



Column : Shodex Asahipak NH2P-40 2D (2.0mmI.D. x 150mm)
Eluent : (A) 0.1% NH₃ aq./ (B) CH₃CN
Isocratic ; (B%) 80%
Flow rate : 0.2mL/min
Detector : ESI-MS (SIM Negative)
Column temp. : 30°C