

Shodex
HPLC Columns



menu

Downloads
Operation Manual /
Certificate of
Analysis

Contact Us

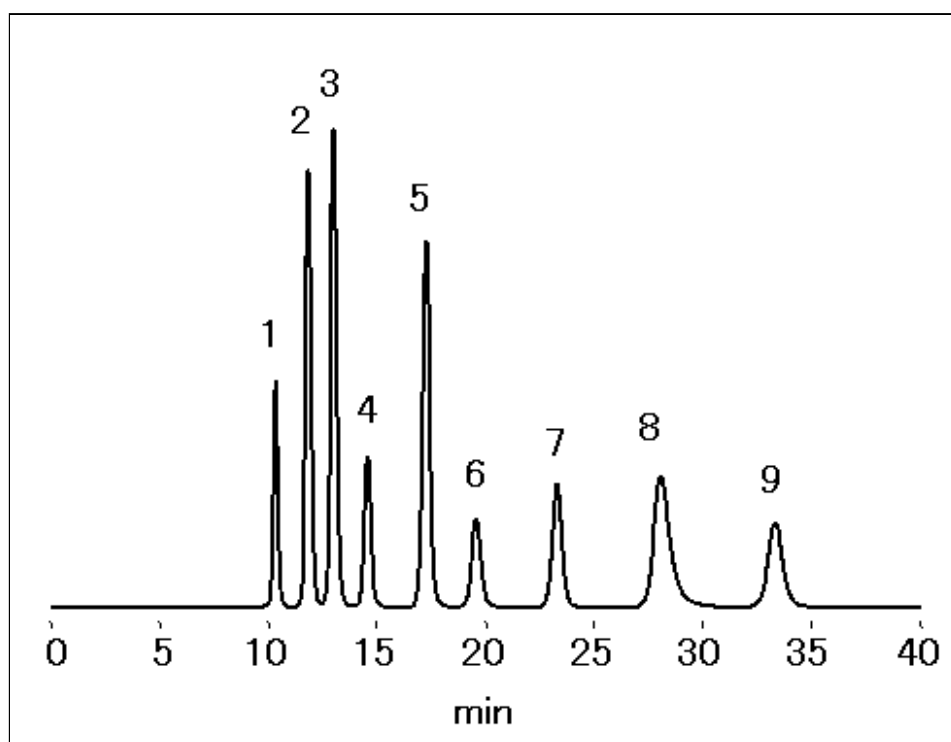
Search within the Site

Products
Applications
Distributors
Support

Language Global Sitemap

"Umami" (GS-320 HQ) Nucleic Acids Nucleobases, Nucleosides and Nucleotides "Umami" (GS-320 HQ)

Asahipak GS-320 HQ is a multimode column and capable of analyzing typical "Umami" (nucleic acids), i.e. IMP, GMP and AMP (nucleotide), and all of their metabolites with simple isocratic elution. The main characteristic of the column is that the nine components (IMP, GMP, AMP and their respective nucleotides, purine bases and pyrimidine bases) are completely separated for approximately 35 minutes and elute in order of nucleotides, nucleosides, purine bases and pyrimidine bases.



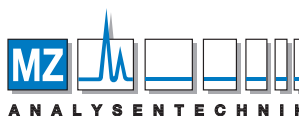
Sample : 50 μ g/mL
each, 20 μ L

1. IMP
2. GMP
3. AMP
4. Inosine
5. Hypoxanthine
6. Guanosine
7. Guanine
8. Adenosine
9. Adenine

Column : Shodex Asahipak GS-320 HQ (7.5 mm I.D. x 300 mm)
Eluent : 10 mM NaH₂PO₄ aq./10 mM Na₂HPO₄ aq.=1000/31
Flow rate : 1.0 mL/min
Detector : UV (260 nm)
Column temp. : 40 °C



Sample Name Index



AUTHORIZED DISTRIBUTOR

MZ-Analysentechnik GmbH, Barcelona-Allee 17 • D-55129 Mainz
Tel +49 6131 880 96-0, Fax +49 6131 880 96-20
e-mail: info@mz-at.de, www.mz-at.de