

**Shodex**  
HPLC Columns



menu

Downloads

Operation Manual /

Certificate of

Analysis

Contact Us

Search within the Site

Products

Applications

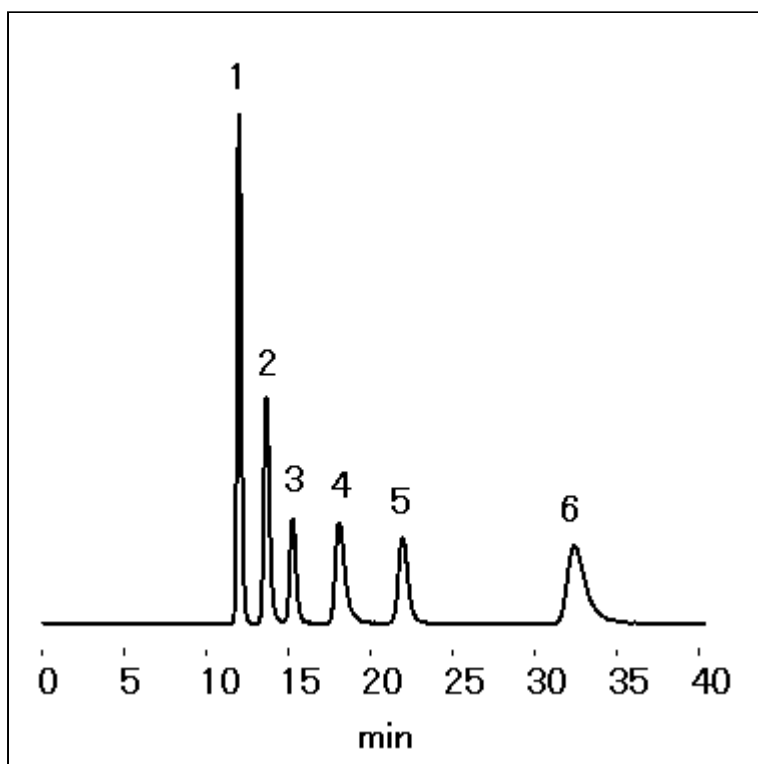
Distributors

Support

Language Global Sitemap

Applications / Nucleosides / Nucleobases, Nucleosides and Nucleotides / Nucleosides (1) (GS-320 HQ)

Nucleosides were analyzed using Asahipak GS-320 HQ ( a multimode column ).



Sample : 50  $\mu$ g/mL each, 20  $\mu$ L

1. Cytidine

2. Uridine

3. Inosine

4. Thymidine

5. Guanosine

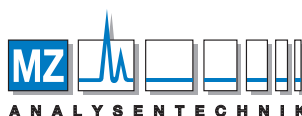
6. Adenosine

Column : Shodex Asahipak GS-320 HQ (7.5 mm I.D. x 300 mm)  
 Eluent : 10 mM NaH<sub>2</sub>PO<sub>4</sub> aq.  
 Flow rate : 1.0 mL/min  
 Detector : UV (260 nm)  
 Column temp. : 30 °C

## Sample Name Index

Adenosine

Cytidine



AUTHORIZED DISTRIBUTOR

MZ-Analysentechnik GmbH, Barcelona-Allee 17 • D-55129 Mainz

Tel +49 6131 880 96-0, Fax +49 6131 880 96-20

e-mail: info@mz-at.de, www.mz-at.de