

**Shodex**  
HPLC Columns



menu

Downloads

Operation Manual /

Certificate of

Analysis

Contact Us

Search within the Site

Products

Applications

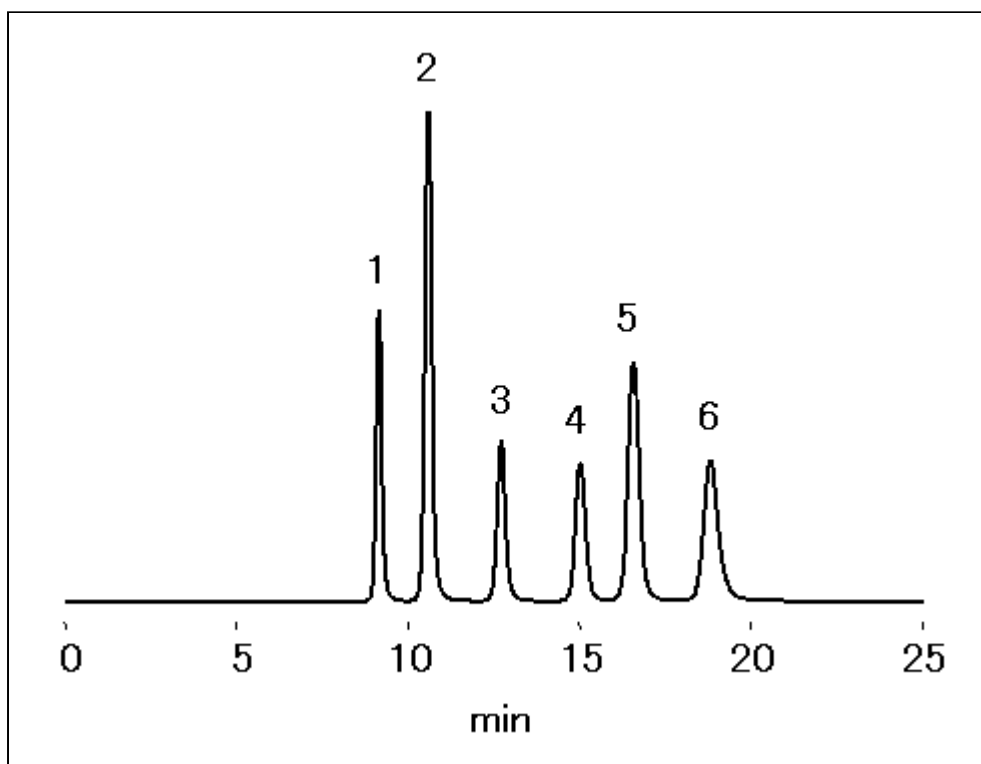
Distributors

Support

Language Global Sitemap

Applications (1) (GS-320 HQ) Nucleobases, Nucleosides and Nucleotides Nucleobases (1) (GS-320 HQ)

Nucleobases were analyzed using Asahipak GS-320 HQ (a multimode column).



Sample : 50  
 $\mu\text{g/mL}$  each, 20  
 $\mu\text{L}$

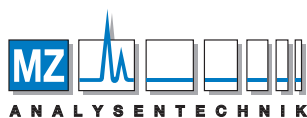
1. Cytosine
2. Adenine
3. Guanine
4. Uracil
5. Hypoxanthine
6. Thymine

Column : Shodex Asahipak GS-320 HQ (7.5 mm I.D. x 300 mm)  
 Eluent : 50 mM  $\text{NaH}_2\text{PO}_4$  aq./50 mM  $\text{H}_3\text{PO}_4$  aq.=500/380  
 Flow rate : 1.0 mL/min  
 Detector : UV (260 nm)  
 Column temp. : 30 °C

## Sample Name Index

Adenine

Cytosine



### AUTHORIZED DISTRIBUTOR

MZ-Analysentechnik GmbH, Barcelona-Allee 17 • D-55129 Mainz  
 Tel +49 6131 880 96-0, Fax +49 6131 880 96-20  
 e-mail: info@mz-at.de, www.mz-at.de