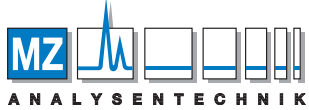


Shodex
HPLC Columns



menu



AUTHORIZED DISTRIBUTOR

MZ-Analysentechnik GmbH, Barcelona-Allee 17 • D-55129 Mainz
Tel +49 6131 880 96-0, Fax +49 6131 880 96-20
e-mail: info@mz-at.de, www.mz-at.de

Downloads

Operation Manual /

Certificate of

Analysis

Contact Us

Search within the Site

Products

Applications

Distributors

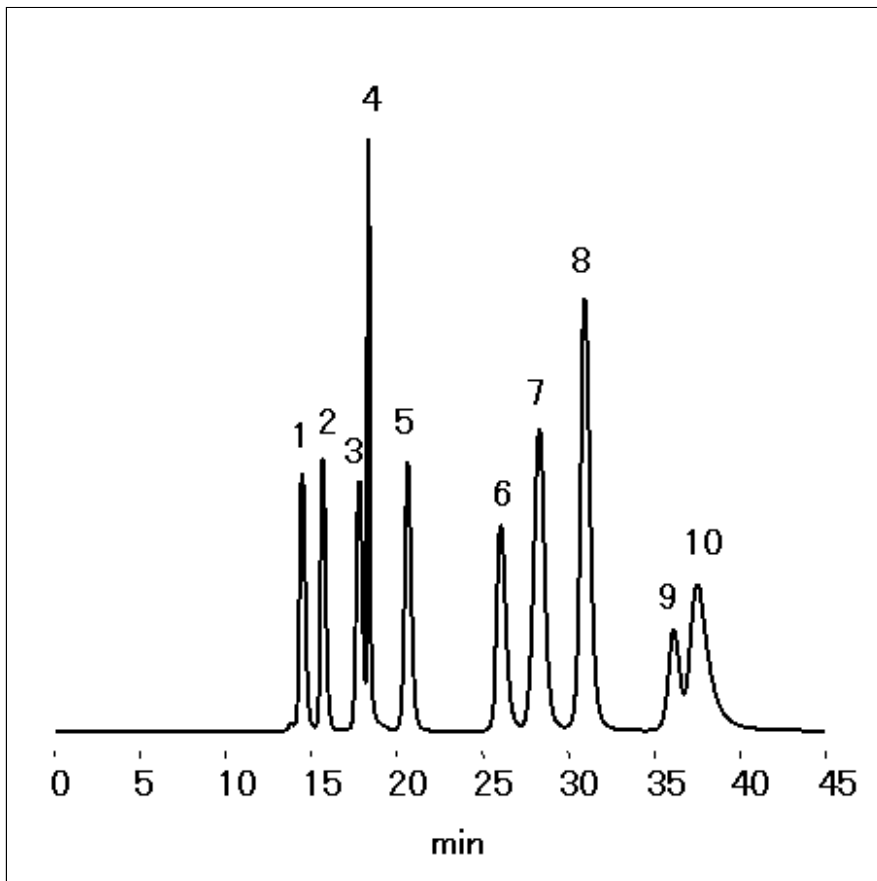
Support

Language Global Sitemap

TOP Applications Nucleic Acids Nucleobases, Nucleosides and Nucleotides Nucleobases, Nucleosides and Nucleotides

Nucleobases, Nucleosides and Nucleotides (AS-320 HQ)

Asahipak GS-320 HQ (a multimode column) is suitable not only for the separation of nucleobases, nucleosides and nucleotides but also for the separation of samples of their mixtures. GS-320 HQ permits one-time separation by isocratic elution without using gradient elution.



Sample : 20 μ L

1. ATP 100 μ g/mL
2. ADP 100 μ g/mL
3. IMP 100 μ g/mL
4. AMP 50 μ g/mL
5. GMP 100 μ g/mL
6. Inosine 100 μ g/mL
7. Adenine 100 μ g/mL
8. Hypoxanthine 100 μ g/mL
9. Guanine 100 μ g/mL
10. Adenosine 100 μ g/mL

Column : Shodex Asahipak GS-320 HQ (7.5 mm I.D. x 300 mm)

Eluent : 205 mM NaH_2PO_4 aq./205 mM H_3PO_4 aq.=300/7

Flow rate : 0.6 mL/min

Detector : UV (260 nm)

Column temp. : 30 $^{\circ}$ C

