

**Shodex**  
HPLC Columns



menu

Downloads

Operation Manual /

Certificate of

Analysis

Contact Us

Search within the Site

Products

Applications

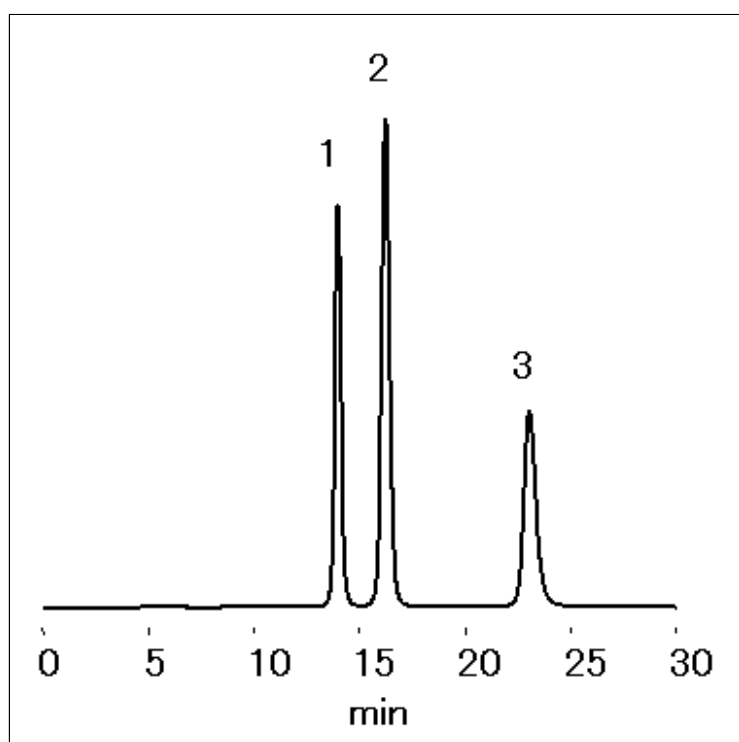
Distributors

Support

Language Global Sitemap

**Cyclic AMP and AMP** [Nucleic Acids](#) [Nucleotides and Isomers](#) [Cyclic AMP and AMP](#)

As Asahipak GS-320 HQ is packed with a packing material bonded with trace amounts of ion exchange groups, the multimode, which combines size exclusion mode predominately with ion exchange mode and reversed phase mode, can be used for the separation of nucleotides.



Sample : 20  $\mu\text{g/mL}$  each, 20  $\mu\text{L}$

1. 2'AMP

2. 3'AMP

3. cAMP

Column : Shodex Asahipak GS-320 HQ (7.5 mm I.D. x 300 mm)

Eluent : 200 mM  $\text{NaH}_2\text{PO}_4$  aq./200 mM  $\text{Na}_2\text{HPO}_4$  aq.=500/15

Flow rate : 1.0 mL/min

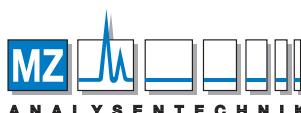
Detector : UV (260 nm)

Column temp. : 30  $^\circ\text{C}$

**Sample Name Index**



Adenylic acid, Adenosine monophosphate



**AUTHORIZED DISTRIBUTOR**

MZ-Analysentechnik GmbH, Barcelona-Allee 17 • D-55129 Mainz

Tel +49 6131 880 96-0, Fax +49 6131 880 96-20

e-mail: info@mz-at.de, www.mz-at.de