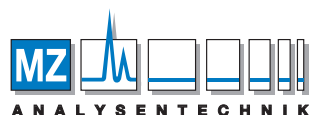


Shodex
HPLC Columns



menu



AUTHORIZED DISTRIBUTOR

MZ-Analysetechnik GmbH, Barcelona-Allee 17 • D-55129 Mainz
Tel +49 6131 880 96-0, Fax +49 6131 880 96-20
e-mail: info@mz-at.de, www.mz-at.de

Downloads

Operation Manual /

Certificate of

Analysis

Contact Us

Search within the Site

Products

Applications

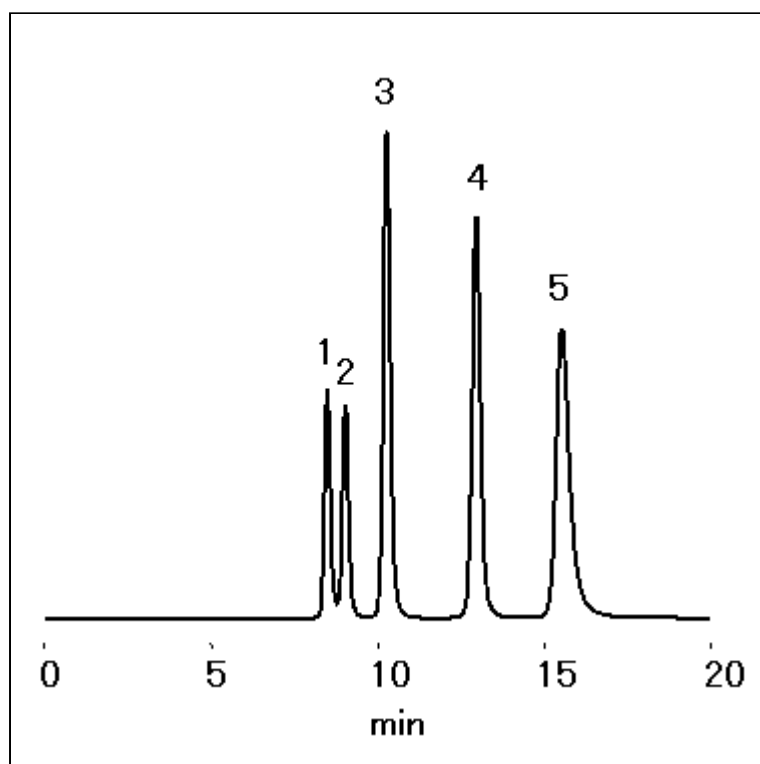
Distributors

Support

Language Global Sitemap

ADP Applications Nucleic Acids Nucleobases, Nucleosides and Nucleotides Adenosine and Derivatives

Adenosine and derivatives were analyzed using Asahipak GS-320 HQ (a multimode column).



Sample : 100 μ g/mL each, 20

μ L

1. ATP
2. ADP
3. AMP
4. Adenine
5. Adenosine

Column : Shodex Asahipak GS-320 HQ (7.5 mm I.D. x 300 mm)
Eluent : 200 mM NaH_2PO_4 aq./ 200 mM H_3PO_4 aq.=500/62
Flow rate : 1.0 mL/min
Detector : UV (260 nm)
Column temp. : 30 $^\circ\text{C}$

Sample Name Index

Adenine

