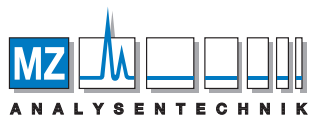


Shodex
HPLC Columns



menu



AUTHORIZED DISTRIBUTOR

MZ-Analysentechnik GmbH, Barcelona-Allee 17 • D-55129 Mainz
Tel +49 6131 880 96-0, Fax +49 6131 880 96-20
e-mail: info@mz-at.de, www.mz-at.de

[Downloads](#)

[Operation Manual /](#)

[Certificate of](#)

[Analysis](#)

[Contact Us](#)

Search within the Site

[Products](#)

[Applications](#)

[Distributors](#)

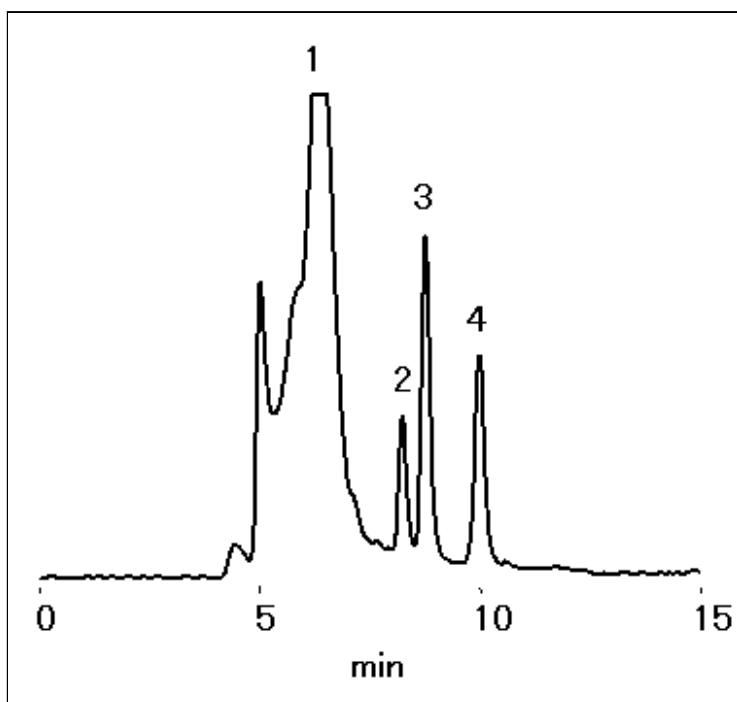
[Support](#)

[Language GlobalSitemap](#)

[TOP](#) [Applications](#) [Nucleic Acids](#) [Nucleobases, Nucleosides and Nucleotides](#) [Adenine Nucleotides in Red](#)

[Adenine Nucleotides in Red Blood Cell](#)

With Asahipak GS-320 HQ (a multimode column), proteins and nucleic acid components of high molecular weights are separated by the GFC mode, they elute all together at the V_0 position. One of the advantages of GS-320 HQ is, for samples consisting of low molecular weight compounds coexisting with those of high molecular weight, that the low molecular weight compounds can be analyzed directly without removing high molecular weight compounds such as proteins.



Sample : 20 μ L

1. Hemoglobin 0.85 %

2. ATP 10 μ g/mL

3. ADP 10 μ g/mL

4. AMP 10 μ g/mL

Column : Shodex Asahipak GS-320 HQ (7.5 mm I.D. x 300 mm)
Eluent : 50 mM NaH_2PO_4 + 50 mM Na_2HPO_4 + 300 mM NaCl
Flow rate : 1.0 mL/min
Detector : UV (260 nm)
Column temp. : 30 $^\circ\text{C}$



[Sample Name Index](#)