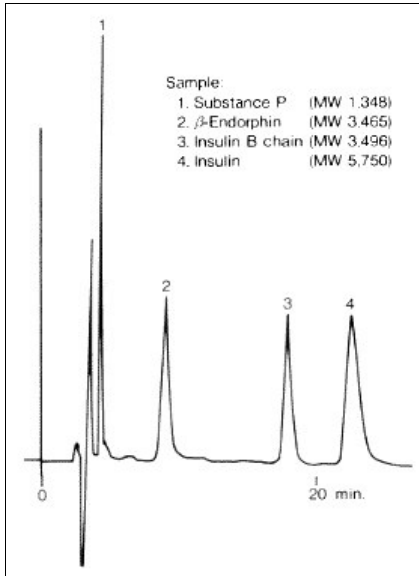


High Molecular Weight Peptides

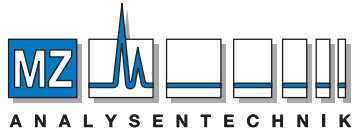
Compared to Asahipak ODP columns, C8P columns allow the analysis of proteins and peptides under more moderate conditions because the organic solvent concentration in the eluent can be lowered.



Sample :

1. Substance P
2. β -Endorphin
3. Insulin B chain
4. Insulin

Column : Shodex Asahipak C8P-50 4D (4.6mmI.D. x 150mm)
Eluent : 0.05% TFA aq./CH₃CN=73/27
Flow rate : 0.6mL/min
Detector : UV (220nm)
Column temp. : 30°C



AUTHORIZED DISTRIBUTOR

MZ-Analysentechnik GmbH, Barcelona-Allee 17• D-55129 Mainz
Tel +49 6131 880 96-0, Fax +49 6131 880 96-20
e-mail: info@mz-at.de, www.mz-at.de