



menu

Downloads
 Operation Manual /
 Certificate of
 Analysis

Contact Us

Products
 Applications
 Distributors
 Support

Language Global Sitemap

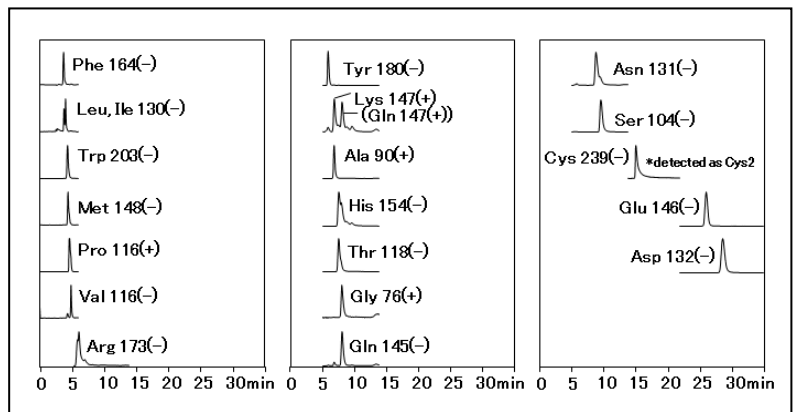
LC/MS Analysis of Essential Amino Acids (NH2P-40 2D) | Applications Proteins, Peptides and Amino acids | Amino Acid Analysis | LC/MS Analysis of Essen

A polymer-based amino HILIC column, Asahipak NH2P-40 2D, was used to analyze 20 amino acids that consists proteins. This method does not require the use of delivertization or ion-pair reagents. The analysis takes less than 35 min. The result show that acidic amino acids tend to be retained longer by the amino function group modified on NH2P-40 2D column packed gel.

*Sales of the product used in this application is discontinued, however if you are still interested in this application, please contact us.

Sample: 5 μ L

Amino acid standards 5 μ g/mL each (in H₂O/CH₃CN=25/75)



Phenylalanine, Phe	Tyrosine, Tyr
Leucine, Leu	Lysine, Lys
Isoleucine, Ile	Alanine, Ala
Tryptophan, Trp	Histidine, His
Methionine, Met	Threonine, Thr



Proline, Pro	Glycine, Gly
Valine, Val	Glutamine, Gln
Arginine, Arg	

Column	: Shodex Asahipak NH2P-40 2D (2.0 mm I.D. x 150 mm)
Eluent	: (A); 100 mM HCOONH ₄ aq. (B); CH ₃ CN Linear gradient; (B %) 75 % (0 to 10 min), 75 % to 50 % (10 to 11 min), 50 % (11 to 35 min)
Flow rate	: 0.2 mL/min
Detector	: ESI-MS (SIM)
Column temp.	: 30 °C

Sample Name Index

Alanine, Ala

Arginine, Arg

Asparagine, Asn

Aspartic acid, Asp

Cysteine, Cys

Glutamic acid, Glu

Glutamine, Gln

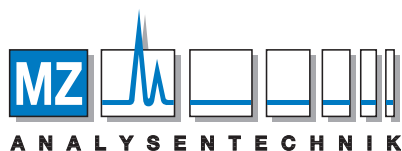
Glycine, Gly

Histidine, His

Isoleucine, Ile

Leucine, Leu

Lysine, Lys



AUTHORIZED DISTRIBUTOR

MZ-Analysentechnik GmbH, Barcelona-Allee 17 • D-55129 Mainz

Tel +49 6131 880 96-0, Fax +49 6131 880 96-20

e-mail: info@mz-at.de, www.mz-at.de