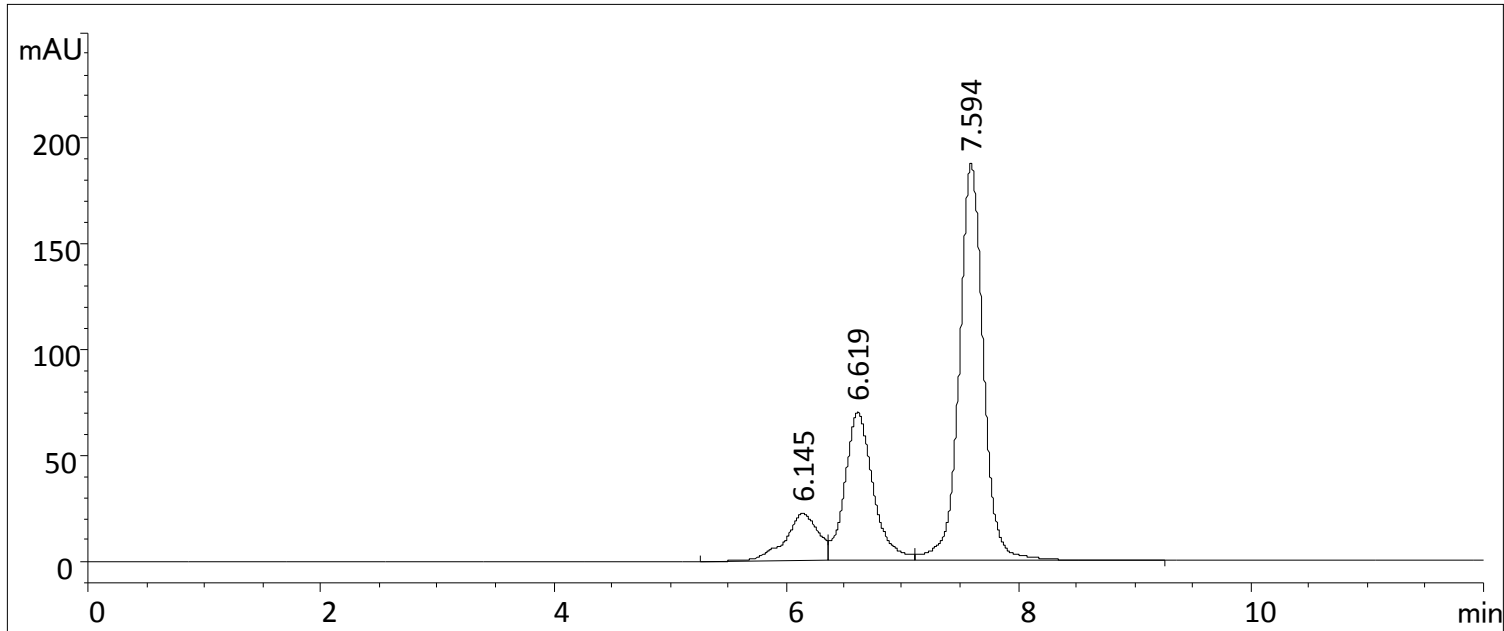


# Aggregated Antibody Sample Analysis on Zenix SEC-300

Column: Zenix SEC-300 ( 3  $\mu\text{m}$ , 300  $\text{\AA}$ , 7.8 x 300 mm), Mobile phase: 150 mM Phosphate buffer pH 7, Flow rate: 1.0 mL/min; Detector: UV 280 nm; Column temperature: 25  $^{\circ}\text{C}$ , Injection volume: 2.9  $\mu\text{L}$ , Sample: Antibody aggregated sample ( 17.4 mg/mL )



Compound Name	RT [min]	Height	Area	Area%	Plates	Tailing	Resolution
	6.14	22	441	10.11	2323	0.76	
	6.62	70	1185	27.14	4101	1.33	1.03
	7.59	188	2739	62.74	7201	1.01	2.52

# Diluted Aggregated Antibody Analysis on Zenix SEC-300

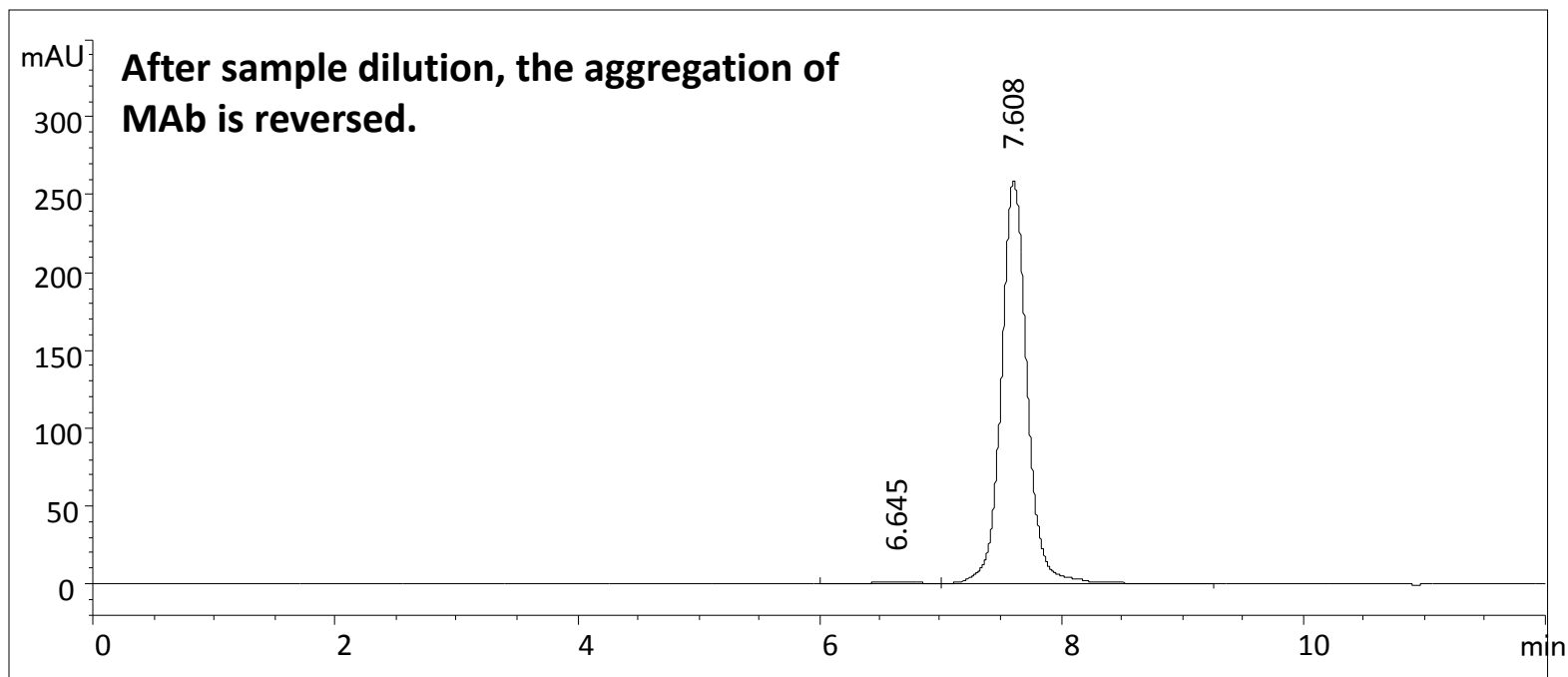
Column: Zenix SEC-300 ( 3  $\mu\text{m}$ , 300  $\text{\AA}$ , 7.8 x 300 mm)

Mobile phase: 150 mM Phosphate buffer, pH 7

Flow rate: 1.0 mL/min; Detector: UV 280 nm; Column temperature: 25  $^{\circ}\text{C}$

Injection volume: 25  $\mu\text{L}$

Sample: Antibody diluted sample ( 2 mg/mL ) from previous slide 17.4 mg/mL



Compound Name	RT [min]	Height	Area	Area%	Plates	Tailing	Resolution
	6.64	1	30	0.77	1616	1.01	
	7.61	259	3842	99.23	6853	1.05	1.87



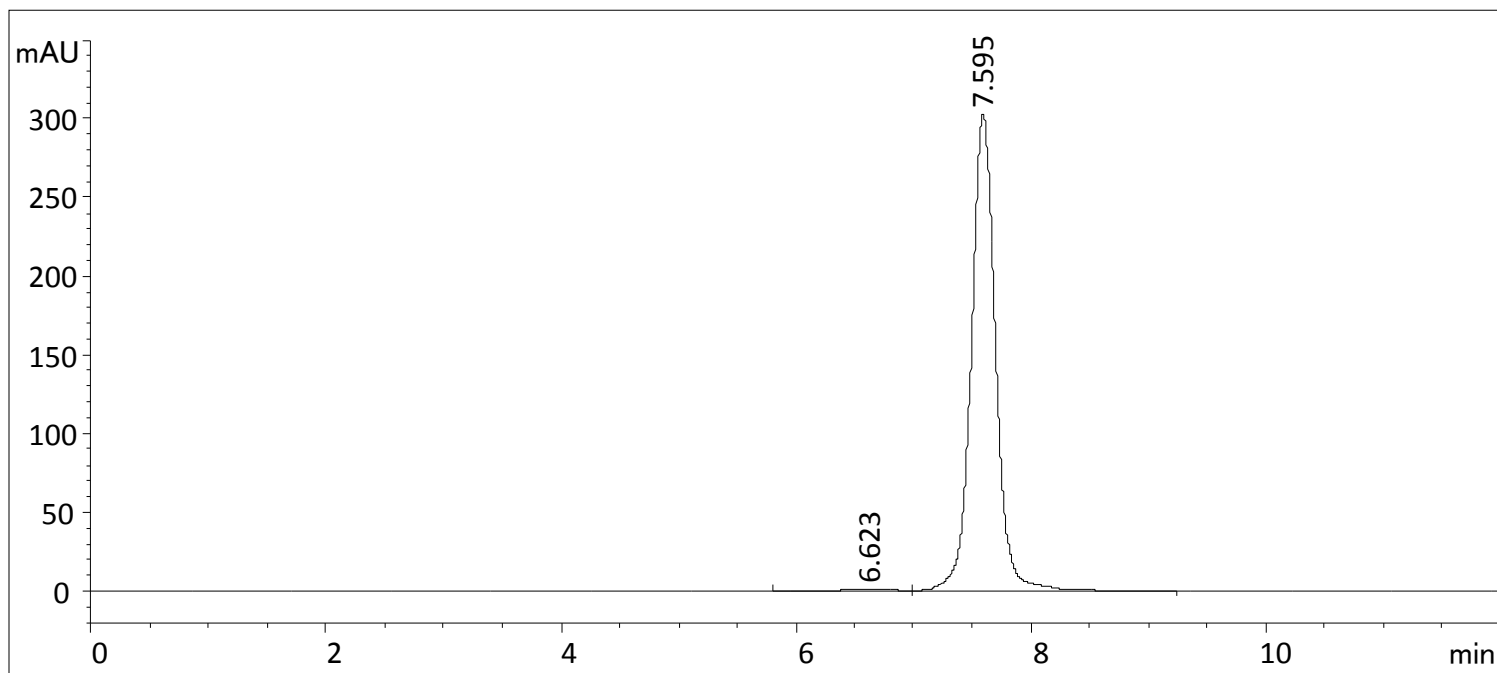
# Fresh Antibody Sample Analysis on Zenix SEC-300

Column: Zenix SEC-300 ( 3  $\mu\text{m}$ , 300  $\text{\AA}$ , 7.8 x 300 mm)

Mobile phase: 150 mM Phosphate buffer, pH 7

Flow rate: 1.0 mL/min; Detector: UV 280 nm; Column temperature: 25  $^{\circ}\text{C}$

Injection volume: 2.9  $\mu\text{L}$  , Sample: Fresh Antibody sample ( 17 mg/mL )



Compound Name	RT [min]	Height	Area	Area%	Plates	Tailing	Resolution
	6.62	1	35	0.81	1696	0.99	
	7.59	302	4354	99.19	7246	1.03	1.94

