

# Recombinant Human Erythropoietin (CHO cell) rhEPO separation on Zenix™ SEC-150

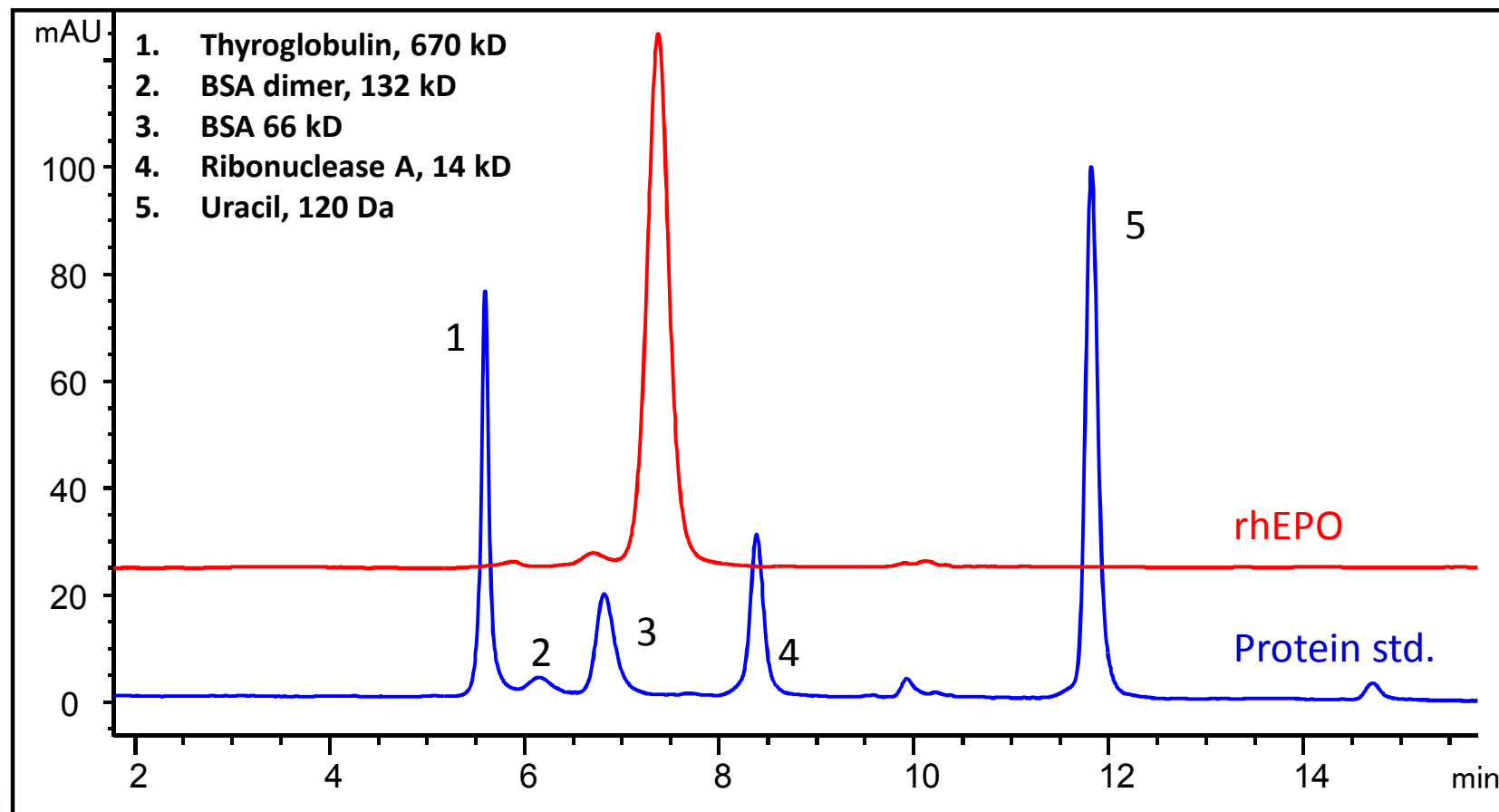
ZP1020

Column: Zenix™ SEC-150 (3 μm, 150 Å, 7.8 x 300 mm)

Mobile phase: 150 mM phosphate buffer, pH 7.0, Flow rate: 1 mL/min,

Detector: 280 nm, Column temperature: 25 °C,

Sample injection: 10 μL rhEPO 3 mg/mL in 100 mM NaCl, 0.3 mM citric acid and 23 mM sodium citrate



[www.sepax-tech.com](http://www.sepax-tech.com)

Better Surface Chemistry for Better Separation © Sepax Technologies, Inc.

## rhEPO separation on Zenix™ SEC-150

Column: Zenix™ SEC-150 (3  $\mu\text{m}$ , 150  $\text{\AA}$ , 7.8 x 300 mm)

Mobile phase: 150 mM phosphate buffer, pH 7.0, Flow rate: **1** mL/min,

Detector: 280 nm, Column temperature: 25  $^{\circ}\text{C}$ ,

Sample injection: 10  $\mu\text{L}$  rhEPO 3 mg/mL in 100 mM NaCl, 0.3 mM citric acid and 23 mM sodium citrate

