

MAb Separation on Unix-C SEC-300 UHPLC Column

Sepax Unix-C SEC-300 1.8 μm 300 Å 4.6x300 mm
(PN: 231300-4630)



Rituximab Separation on Unix-C SEC-300

Column: Unix-C SEC-300 (1.8 μm , 300 \AA , 4.6 x 300 mm)
(PN: 231300-4630)

Mobile phase: 150 mM phosphate buffer, pH 7.0

Flow rate: 0.3 mL/min

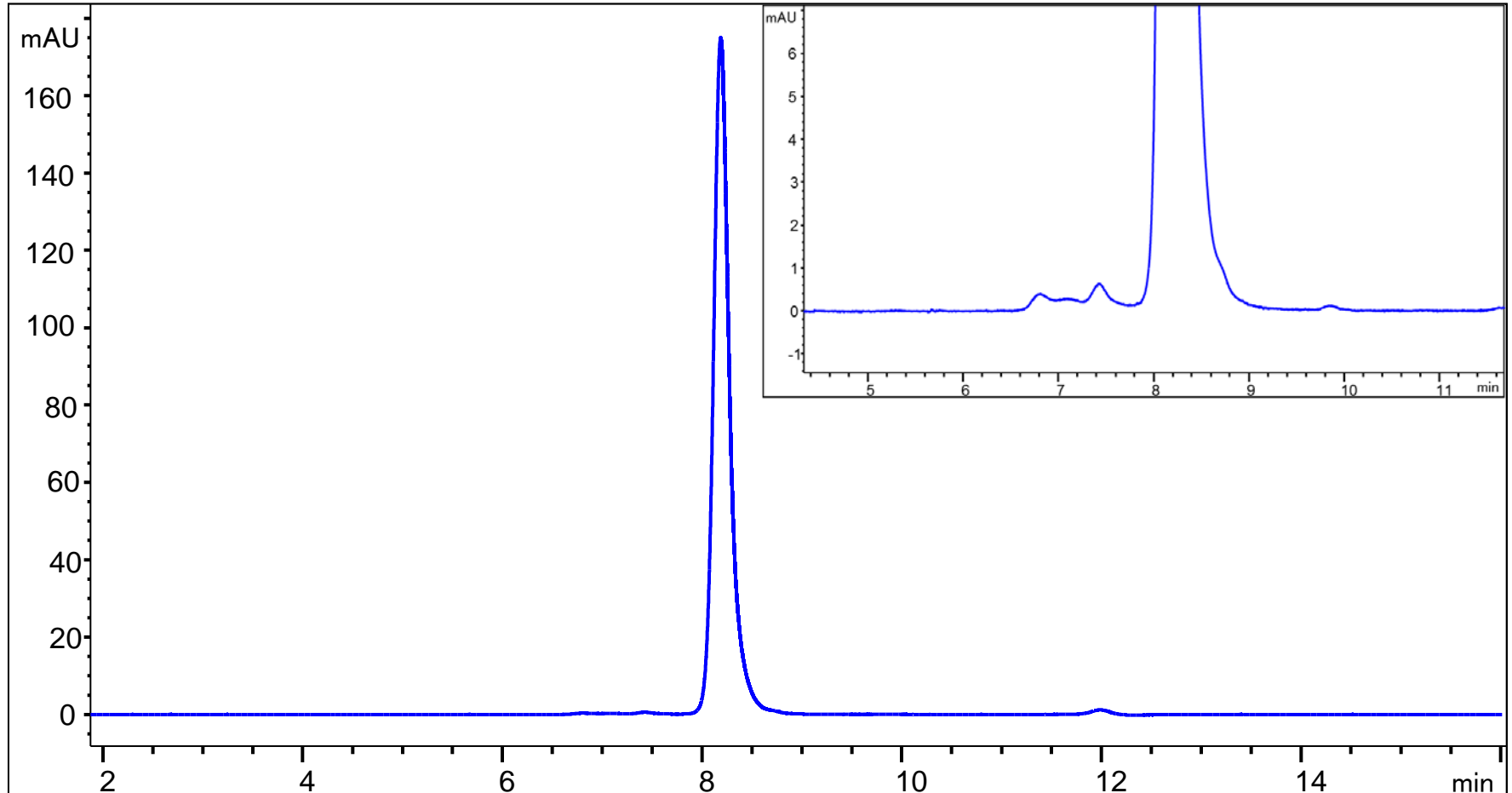
System: UHPLC

Detector: UV 280 nm

Column temperature: Ambient

Injection volume: 1 μL

Samples: 10 mg/mL Rituximab



Erbitux Separation on Unix-C SEC-300

Column: Unix-C SEC-300 (1.8 μm , 300 \AA , 4.6 x 300 mm)
(PN: 231300-4630)

Mobile phase: 150 mM phosphate buffer

Flow rate: 0.3 mL/min

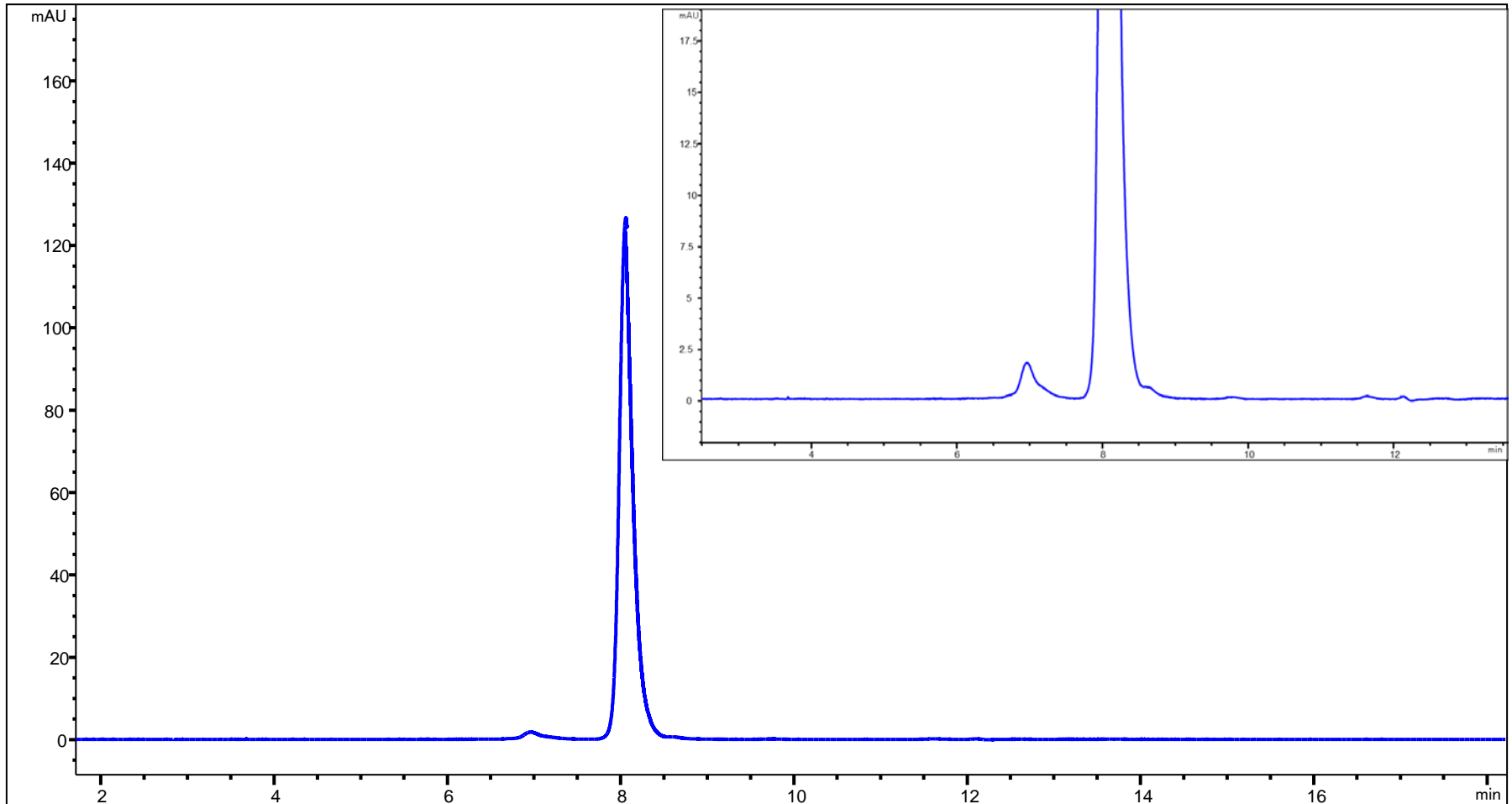
System: UHPLC

Detector: UV 280 nm

Column temperature: Ambient

Injection volume: 5 μL

Samples: 2mg/ml Erbitux



MAb321 Separation on Unix-C SEC-300

Column: Unix-C SEC-300 (1.8 μm , 300 \AA , 4.6 x 300 mm)
(PN: 231300-4630)

Mobile phase: 150 mM phosphate buffer

Flow rate: 0.3 mL/min

System: UHPLC

Detector: UV 280 nm

Column temperature: Ambient

Injection volume: 2 μL

Samples: 5mg/ml MAb321

