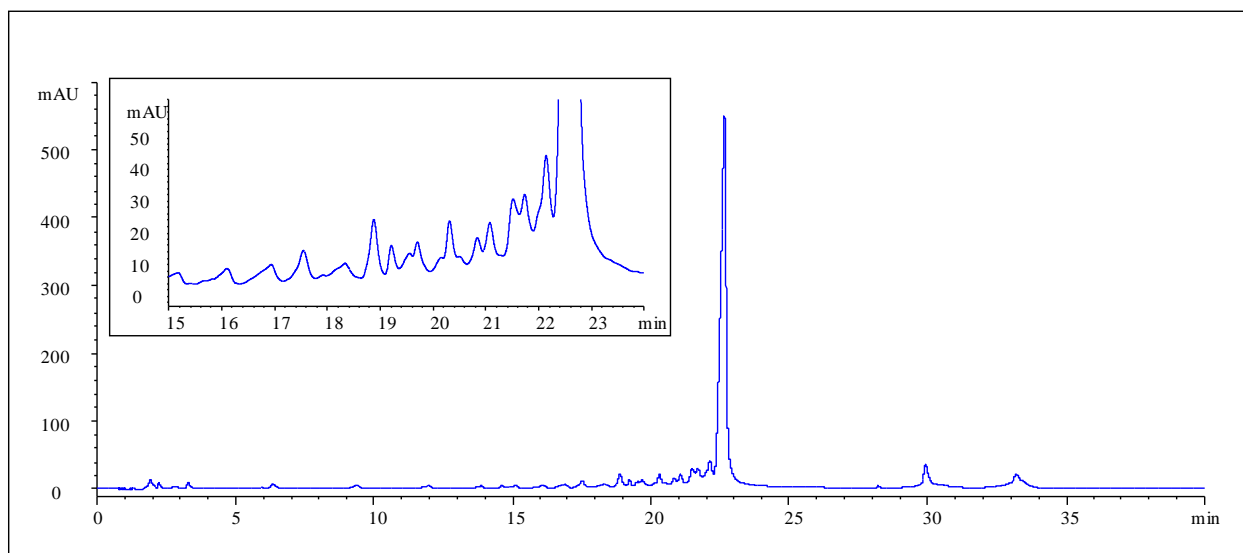




Analysis of DNA on Proteomix[®] WAX-NP5 (5 μ m, 4.6x150 mm)



Column: Proteomix[®] WAX-NP5 (5 μ m, 4.6x150 mm)
Mobile Phases: A: 20 mmol Tris pH 6.0; B: A + 1.0 M NaCl
Gradient: 20%-100%B (40 min)
Flow Rate: 0.6 mL/min
Back Pressure: 70 Bar
Detection: UV 260 nm
Temperature: Ambient
Injection Volume: 5 μ L

Keywords: Ion-exchange, Proteomix, weak anion exchange, oligonucleotide, DNA