

# Erbix and Rituximab Monoclonal Antibody Separation on Proteomix<sup>®</sup> HIC Butyl NP5

Proteomix<sup>®</sup> HIC Butyl, NP5, 4.6 x 35 mm

PN: 431NP5-4603



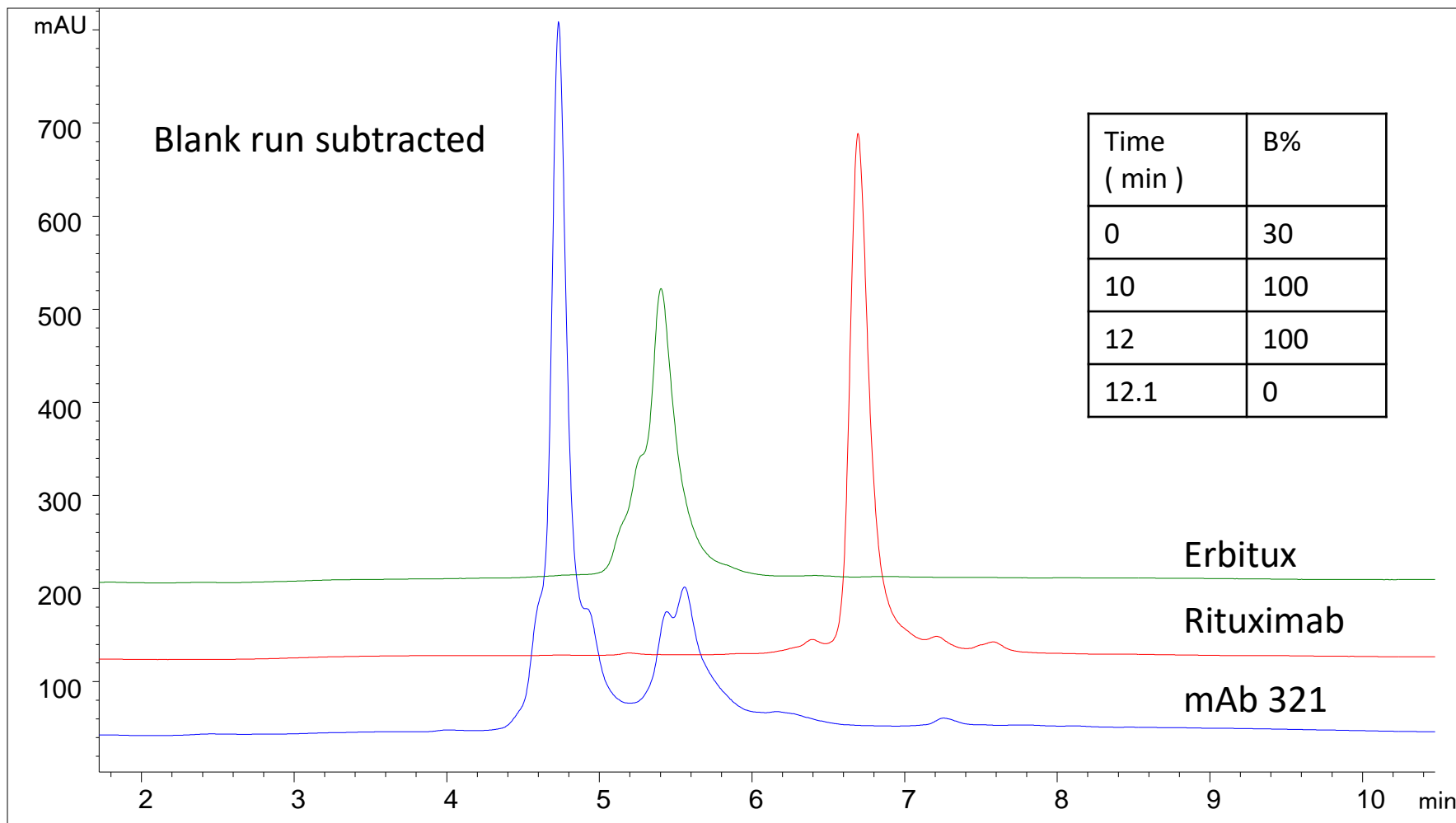
# MAb (Erbtux and Rituximab) Separation on Proteomix<sup>®</sup> HIC Butyl NP5

Column: Proteomix<sup>®</sup> HIC Butyl NP5, 5  $\mu$ m, NP, 4.6 x 35 mm

Mobile phase: A: 100 mM sodium phosphate buffer, 2 M ammonium sulfate, pH 7.0, B: 100 mM sodium phosphate buffer, pH 7.0;

Flow rate: 1 mL/min, Detector: UV 214 nm, Column temperature: 25°C

Injection: 5  $\mu$ g mAb samples, 1 mg/mL mAb in 750 mM ammonium sulfate, 50 mM phosphate buffer



# MAb (Erbtux and Rituximab) Separation on Proteomix<sup>®</sup> HIC Butyl NP5

Column: Proteomix<sup>®</sup> HIC Butyl NP5, 5  $\mu$ m, NP, 4.6 x 35 mm

Mobile phase: A: 100 mM sodium phosphate buffer, 2 M ammonium sulfate, pH 7.0, B: 100 mM sodium phosphate buffer, pH 7.0;

Flow rate: 1 mL/min, Detector: UV 214 nm, Column temperature: 25°C

Injection: 5  $\mu$ g mAb samples, 1 mg/mL mAb in 750 mM ammonium sulfate, 50 mM phosphate buffer

