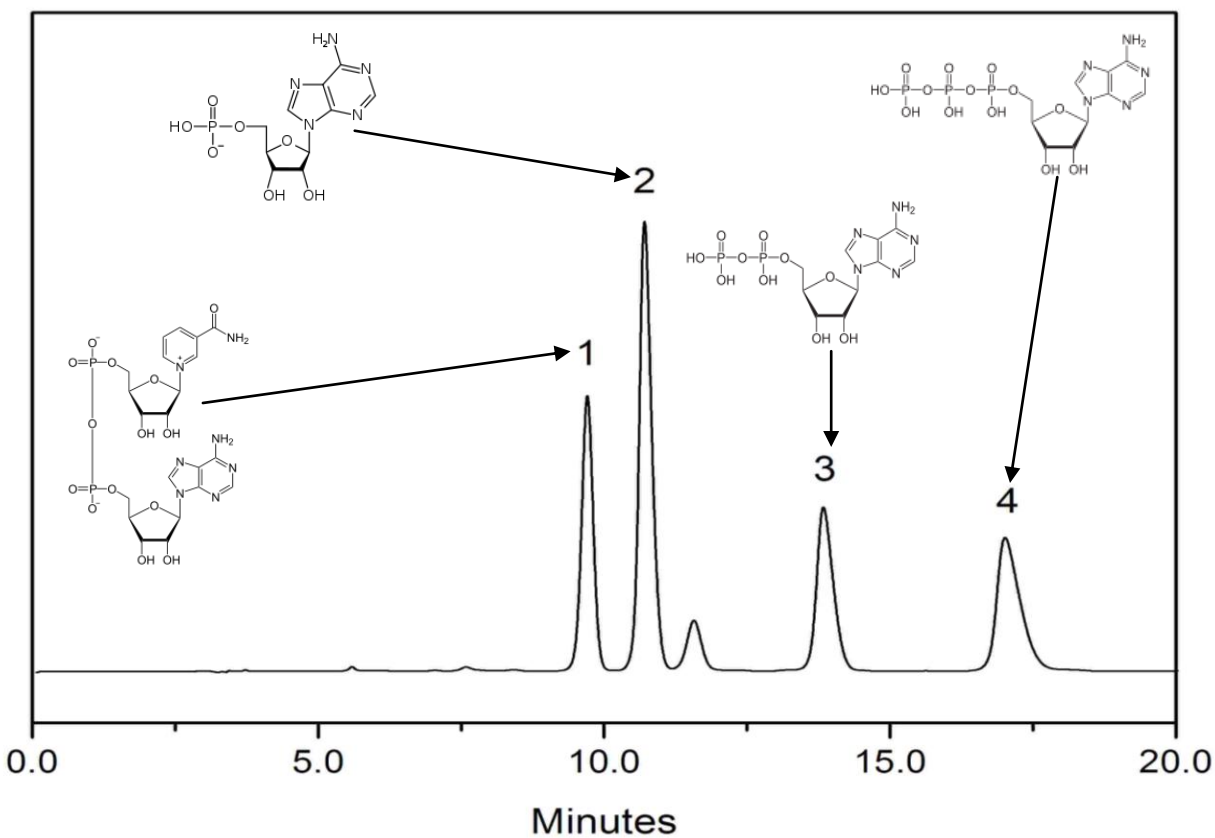


Separation of a Nucleotide Mixture on HP-C18



Column:	HP-C18, 5 μ m, 120 Å, 4.6x250 mm
Mobile phase:	PB (pH 6.6): CH ₃ OH= 90: 10 (v/v)
Flow rate:	1 mL/min
Temperature:	Ambient
Detection:	254 nm
Injection Volume:	20 μ L
Sample:	Nucleotide mixture
	1. NAD
	2. AMP
	3. ADP
	4. ATP

Keywords: HP-C18, reverse phase, nucleotide, NAD, AMP, ADP, ATP