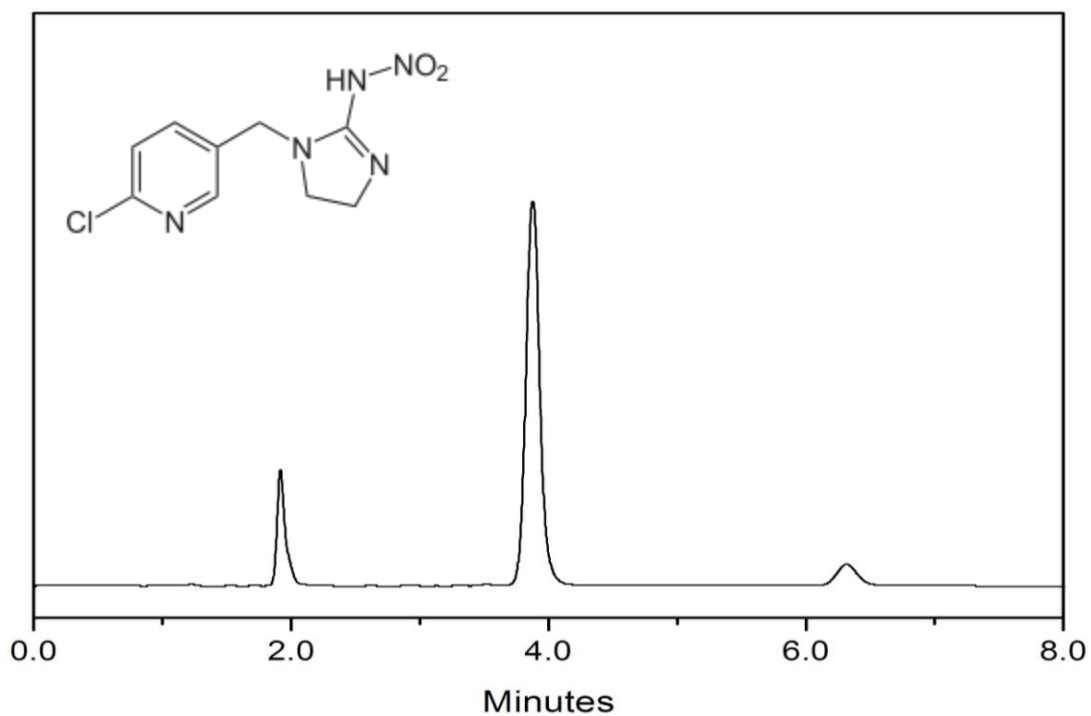


## Analysis of Imidacloprid Wettable Powder on HP-C18



Column: HP-C18, 5  $\mu\text{m}$ , 120  $\text{\AA}$ , 4.6 $\times$ 150 mm  
Mobile phase: CH<sub>3</sub>OH: H<sub>2</sub>O = 50: 50 (v/v)  
Flow rate: 1.0 mL/min  
Temperature: Ambient  
Detection: UV 260 nm  
Injection Volume: 10  $\mu\text{L}$   
Sample: Imidacloprid wettable powder

Keywords: HP-C18, reverse phase, imidacloprid wettable powder, agriculture, imidacloprid