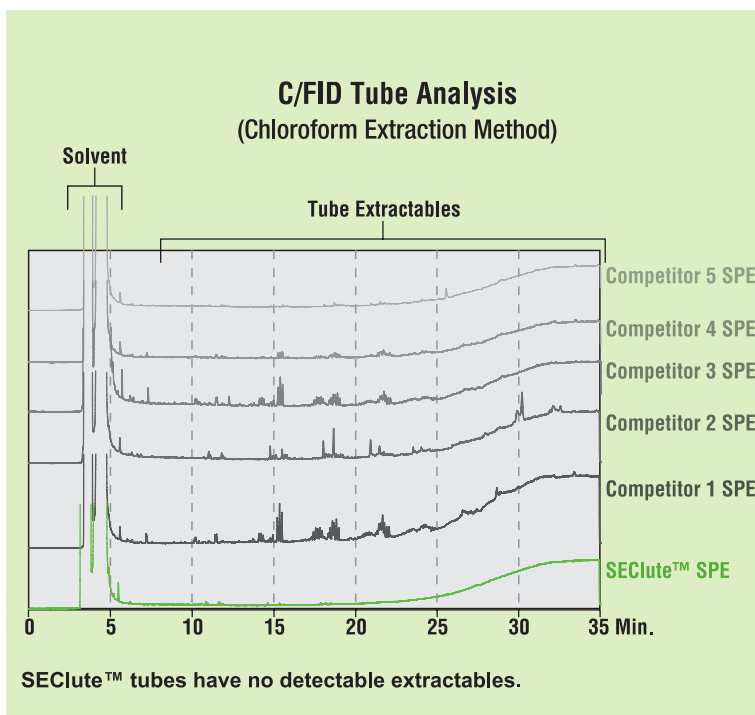


SEClute™ SPE Columns

For the Clean-up, Concentration and Recovery of Chromatography Samples

- **Clean** — Extractable-free, medical grade polypropylene tubes, and ultra-pure silica
- **Reproducible** — Devices subjected to over 20 performance criteria, and guaranteed to have less than 2% bed weight variation
- **Reliable** — 30 years SPE industry experience, comprehensive technical support, and ISO 9001-2008 certified



SEClute™ Reversed-Phase and Normal-Phase Specifications

Sorbent	Support	Carbon (%)	Endcapping	Surface Area (m ² /g)	Particle Size (µm)	Pore Size (Å)	Features and Benefits
C18-Max	Silica	17.1	Yes	518	50	60	Polymerically bonded with highest binding capacity. Best for complex samples or structurally diverse analytes.
C18-Aq	Silica	12.5	Yes	518	50	60	Water-wettable C18 ideal for aqueous samples. Phase remains active even when completely dry.
C18-Low	Silica	6.5	Yes	518	50	60	Lowest carbon-load C18 phase that easily releases very hydrophobic compounds. Use for surfactants, oils, antibiotics.
C18-Fast	Silica	7.0	Yes	518	100	60	Large 100µm particle processes large volume (>500mL) or viscous samples with fast flow rates. Ideal for aniline, pesticides, haloethers, phthalate esters, EPA 3620, 3610.
Silica	Silica	N/A	N/A	518	50	60	Most polar phase is able to differentiate between structurally similar compounds. Use for aflatoxins, pesticides, steroids, structural isomers.
Amino	Silica	4.3	No	518	50	60	Retains polar compounds, or can act as a weak anion exchanger. Easily releases strong acids when SAX binds too strongly. Use for carbohydrates, dyes, lipids, mycotoxins, strong acids.
Diol	Silica	N/A	No	518	50	60	Very polar phase that has the same benefits as silica, but wets easily and offers more reproducibility.

SEClute™ Polymer Ion-Exchange Phase Specifications

Sorbent	Support	Exchange Capacity (meq/g)	Counter Ion	Particle Size (µm)	Features and Benefits
Anion-X	8% cross-linked styrene-divinylbenzene	1.5	Acetate form	50	Tetramethyl ammonium functional group. Retains anionic compounds (organic acids, fatty acids), pH range from 1–14.
Cation-X	8% cross-linked styrene-divinylbenzene	2.4	Hydrogen form	50	Benzene sulfonic acid functional group. Retains cationic compounds (amines, amino acids), pH range from 1–14.

Phase Tradename Cross Reference

Try SEClute™ Phase	If you use:				
	Varian® Bond Elut®	Waters® Sep-Pak®	Phenomenex® Strata™	Supelco® Discovery®, Supelclean™	JT Baker Bakerbond™
C18-Max	C18	tC18	C18-E	DSC-18	Octadecyl
C18-Aq	C18OH	C18	C18-U	DSC-18Lt	Octadecyl lightload
C18-Low	N/A	N/A	N/A	LC-18	N/A
C18-Fast	N/A	N/A	N/A	N/A	N/A
Silica	LC-Si	Silica	Si-1	DSC-Si or LC-Si	Silica Gel
Amino	NH2	NH2	NH2	LC-NH2	Amino
Diol	2OH	Diol	N/A	DSC-Diol or LC-Diol	N/A
Anion-X	SAX	N/A	SAX	DSC-SAX or LC-SAX	Quaternary Amine
Cation-X	SCX	N/A	SCX	DSC-SCX or LC-SCX	Aromatic Sulfonic Acid

SEClute™ Reversed-Phase SPE Columns

Sorbent	Bed Weight	Column Volume	Qty.	Part No.
C18-Max	50mg	1mL	100pk	5141484
	100mg	1mL	100pk	5138765
	500mg	3mL	50pk	5138766
	500mg	6mL	30pk	5138767
	1000mg	6mL	30pk	5138768
	2000mg	20mL	20pk	5141525
C18-Aq	5000mg	20mL	20pk	5141524
	50mg	1mL	100pk	5141486
	100mg	1mL	100pk	5138774
	500mg	3mL	50pk	5138775
	1000mg	6mL	30pk	5138776
	2000mg	12mL	30pk	5141482
C18-Low	5000mg	20mL	20pk	5141523
	5000mg	20mL	30pk	5141489
	100mg	1mL	100pk	5138760
	200mg	3mL	50pk	5138761
	500mg	3mL	50pk	5138762
	500mg	6mL	30pk	5138763
C18-Fast	1000mg	6mL	30pk	5138764
	5000mg	20mL	20pk	5141526
	500mg	3mL	50pk	5138758
	1000mg	6mL	30pk	5138759
5000mg	20mL	20pk	5141527	

SEClute™ Normal-Phase SPE Columns

Sorbent	Bed Weight	Column Volume	Qty.	Part No.	
Silica	100mg	1mL	100pk	5138777	
	200mg	3mL	50pk	5138778	
	500mg	3mL	50pk	5138779	
	5000mg	20mL	20pk	5138780	
	500mg	6mL	30pk	5138781	
	1000mg	6mL	30pk	5138782	
	2000mg	12mL	30pk	5138783	
	10000mg	60mL	16pk	5138784	
	Amino	500mg	3mL	50pk	5138752
		1000mg	6mL	30pk	5138753
Diol	100mg	1mL	100pk	5138771	
	200mg	3mL	50pk	5138772	
	500mg	3mL	50pk	5138773	
Florisil®	500mg	3mL	50pk	5141522	
	1000mg	6mL	30pk	5141520	
	2000mg	12mL	30pk	5141521	

SEClute™ Polymer Ion-Exchange SPE Columns

Sorbent	Bed Weight	Column Volume	Qty.	Part No.
Anion-X	100mg	1mL	100pk	5138754
	500mg	3mL	50pk	5138755
	1000mg	3mL	50pk	5141487
Cation-X	100mg	1mL	100pk	5138769
	500mg	3mL	50pk	5138770
	1000mg	3mL	50pk	5141488

SPE Vacuum Manifolds

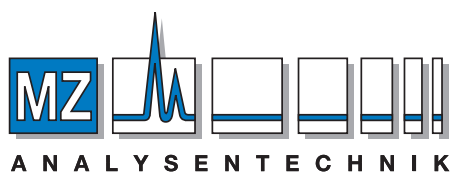
Vacuum Manifold Components

- | | |
|---------------------------|---|
| A. Glass Chamber | F. Support Posts for Collection Racks |
| B. Vacuum Valve and Gauge | G. Retaining Clips for Collection Racks |
| C. Polypropylene Lid | H. Lid Legs |
| D. Stopcock Valves | I. Manifold Inlet Caps |
| E. Collection Rack Plates | J. Polypropylene Needles |

24-Port Manifold and Accessories

Description	Qty.	Part No.
24-Port Vacuum Manifold*	ea	5122426
Replacement Parts		
Lid, Gaskets, and 24 Stopcocks	ea	8604549
Vacuum Gauge, Valve, and Glass Chamber	ea	8604540
Collection Rack	ea	8604542
Gaskets	2	2106735
One-Way Stopcocks	24	2106747

*12-Port also available



AUTHORIZED DISTRIBUTOR

MZ-Analysentechnik GmbH, Barcelona-Allee 17 • D-55129 Mainz

Tel +49 6131 880 96-0, Fax +49 6131 880 96-20

e-mail: info@mz-at.de, www.mz-at.de