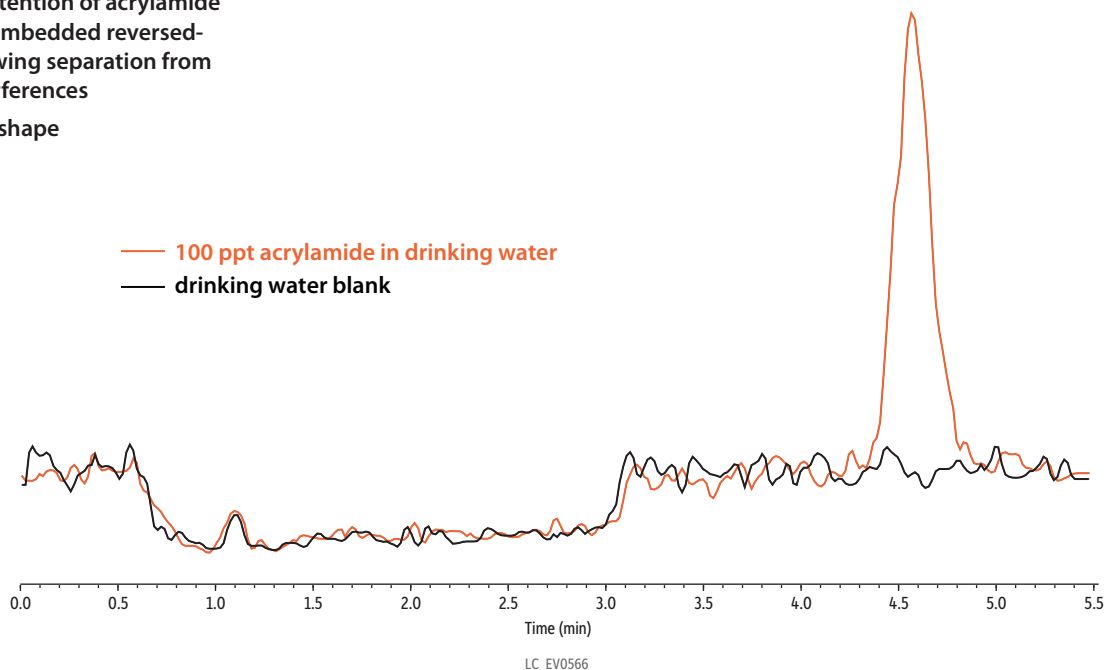


## Comparison of 100 ppt Acrylamide in Tap Water to a Unfortified Tap Water with the Allure Acrylamide LC Column

- Capable of handling large volume injections
- Excellent retention of acrylamide on a polar embedded reversed-phase, allowing separation from matrix interferences
- Good peak shape



Peaks	Retention Time (min)	Concentration (ng/L)	Precursor	Product
1. Acrylamide	4.586	100	72.1	55.1

**Column** Allure Acrylamide (cat.# 916756E)  
 Dimensions: 150 mm x 3 mm ID  
 Particle Size: 5 µm  
 Pore Size: 60 Å  
 Guard Column: Allure Acrylamide guard cartridge 10 mm, 2.1 mm ID, 5 µm (cat.# 916750212)  
 Temp.: 22 °C  
**Sample** Acrylamide (cat.# 30494)  
 Diluent: Tap water  
 Conc.: 100 ng/L  
 Inj. Vol.: 100 µL  
**Mobile Phase**  
 A: 0.001% Formic acid in water

Time (min)	Flow (mL/min)	%A
0.00	0.8	100
5.5	0.8	100

**Detector** MS/MS  
 Ion Mode: ESI+  
 Mode: MRM  
**Instrument** HPLC  
**Notes** Tap water samples (1) fortified with 100 ppt acrylamide and (2) neat. Direct injection with 100 µL injection volume.