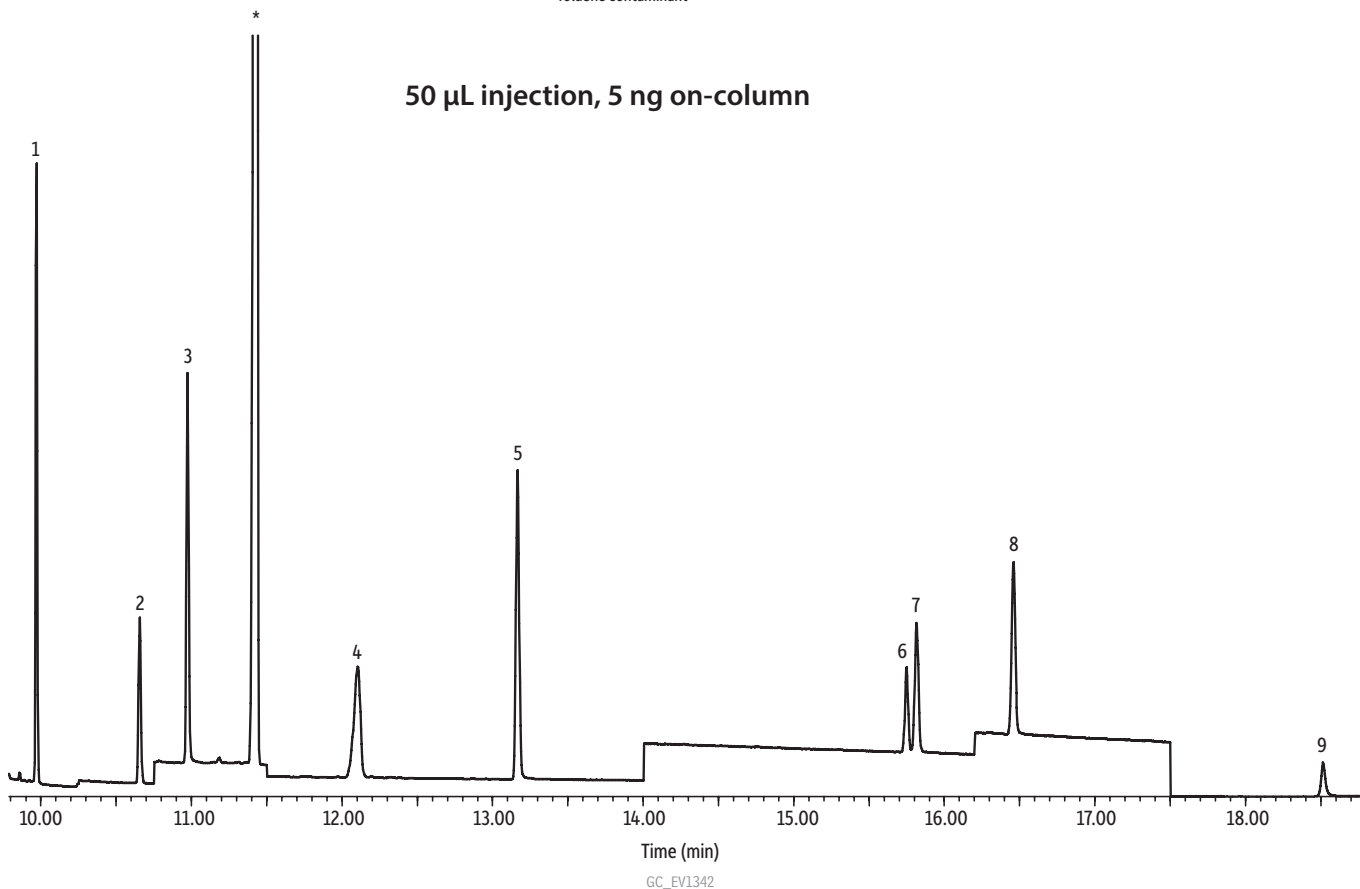


50 µL CSR-LVSI with 5 ng Nitrosamines, THF, and 1,4-Dioxane On-Column

- Peaks**
1. Tetrahydrofuran
 2. 1,4-Dioxane
 3. N-Nitrosodimethylamine
 4. N-Nitrosomethylethylamine
 5. N-Nitrosodiethylamine
 6. N-Nitrosopyrrolidine
 7. N-Nitrosodi-*n*-propylamine
 8. N-Nitrosopiperidine
 9. N-Nitrosodi-*n*-butylamine
- * Toluene contaminant



Column Rxi®-5Sil MS, 30 m, 0.25 mm ID, 1.00 µm (cat.# 13653)
using Rxi® guard column 10 m, 0.53 mm ID (cat.# 10073)
with BGB P/N: 2553LD

Sample 1,4-Dioxane (cat.# 30287)
Nitrosamine calibration mix, Method 521 (cat.# 31898)
Tetrahydrofuran (THF) (cat.# 30414)

Diluent: Dichloromethane
Conc.: 0.1 µg/mL

Injection
Inj. Vol.: 50 µL splitless (hold 1.5 min)
Liner: Custom Premium single taper with 15 mg quartz wool
Inj. Temp.: 275 °C
Purge Flow: 100 mL/min

Oven
Oven Temp.: 35 °C (hold 1.5 min) to 50 °C at 50 °C/min (hold 7.1 min) to 320 °C at 11.12 °C/min (hold 1.5 min)

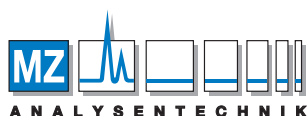
Carrier Gas
Flow Rate: 5.08 mL/min

Detector
Mode: MS
SIM

SIM Program:

| Group | Start Time (min) | Ion(s) (m/z) | Dwell (ms) |
|-------|------------------|-----------------------------------|------------|
| 1 | 9.70 | 42, 46, 71, 72, 78, 80 | 40 |
| 2 | 10.25 | 58, 62, 64, 88, 96 | 40 |
| 3 | 10.75 | 42, 43, 46, 48, 74, 80 | 40 |
| 4 | 11.50 | 42, 44, 56, 88, 102 | 40 |
| 5 | 14.00 | 56, 68, 70, 78, 86, 100, 130, 144 | 25 |
| 6 | 16.20 | 55, 56, 84, 114 | 40 |
| 7 | 17.50 | 99, 116, 141, 158 | 40 |

Transfer Line
Temp.: 320 °C
Analyzer Type: Quadrupole
Source Temp.: 230 °C
Quad Temp.: 150 °C
Solvent Delay
Time: 9.7 min
Tune Type: BFB
Ionization Mode: EI
Instrument Agilent 7890A GC & 5975C MSD



AUTHORIZED DISTRIBUTOR
MZ-Analysentechnik GmbH, Barcelona-Allee 17 • D-55129 Mainz
Tel +49 6131 880 96-0, Fax +49 6131 880 96-20
e-mail: info@mz-at.de, www.mz-at.de