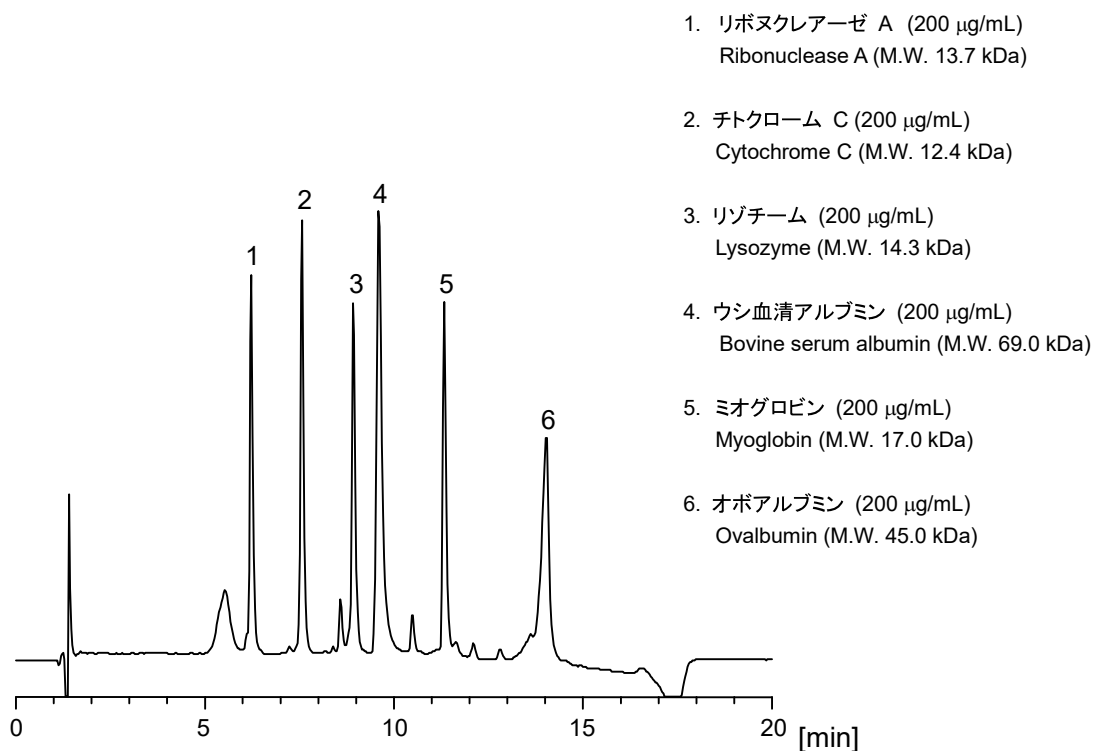


タンパク質やペプチドの分析用に開発された Proteonavi (2.0 mm i.d. x 150 m) を用い、標準的なタンパク質を分離した例を紹介します。

The chromatogram below was the separation of six common proteins obtained with Proteonavi (2.0 mm i.d. x 150 mm), or a column especially designed for separation of proteins and peptides.



【HPLC Conditions】

Column : Proteonavi ; 2.0 mm i.d. x 150 mm
 Mobile phase : A) 0.1 vol% TFA, B) 0.1 vol% TFA , CH₃CN
 B 20 % (0 min) → 70 % (15 min) → 20 % (15.1 min) Gradient
 Flow rate : 200 µL/min
 Temperature : 40 °C
 Detection : UV 220 nm
 Inj. vol. : 2 µL
 Sample dissolved in : Each standard was dissolved at 2 mg/mL in H₂O. 100 µL of all the solutions were added together, and diluted to 1 mL with H₂O.
 ※ 1 µg/mL = 1 ppm