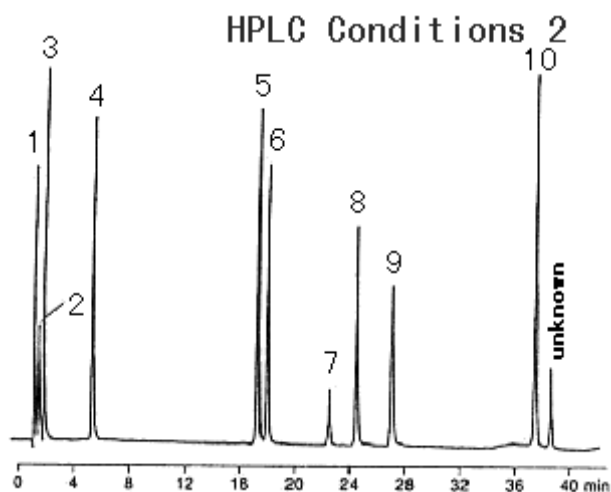
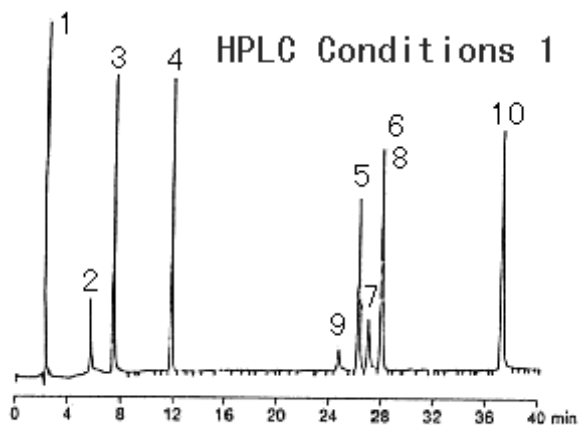


AUTHORIZED DISTRIBUTOR
 MZ-Analyse-technik GmbH, Barcelona-Allee 17 • D-55129 Mainz
 Tel: +49 6131 880 96-0, Fax: +49 6131 880 96-20
 e-mail: info@mz-at.de, www.mz-at.de

- | | | |
|----------------------|------------------------|------------------------|
| 1 Peptide(Tetra-Ala) | 2 Peptide(Gly-Gly-Leu) | 3 Peptide(Gly-Gly-Phe) |
| 4 Peptide(Tri-Tyr) | 5 Leu-Enkephalin | 6 Angiotensin II |
| 7 Peptide(Tri-Leu) | 8 Angiotensin III | 9 Bradykinin |
| 10 Peptide(Tri-Phe) | | |

HPLC Conditions 1

Column CAPCELL PAK C18 AG120 S5 : 4.6 mm i.d.×250 mm
 Mobile phase (A) 0.1vol% TFA, H₂O
 (B) 0.1vol% TFA, H₂O / CH₃CN = 50 / 50
 B 20% - 80% (60min) Gradient
 Flow rate 1.5 mL/min
 Temperature 40 °C

Detect UV 210 nm

HPLC Conditions 2

Column CAPCELL PAK C₁₈ AG120 S5 : 4.6 mm i.d.×250 mm

Mobile phase (A) 0.1mol/L NaClO₄, 50mmol/L H₃PO₄, pH9 (NaOH)
(B) CH₃CN
B 5% - 35% (60min) Gradient

Flow rate 1.5 mL/min

Temperature 40 °C

Detect UV 210 nm