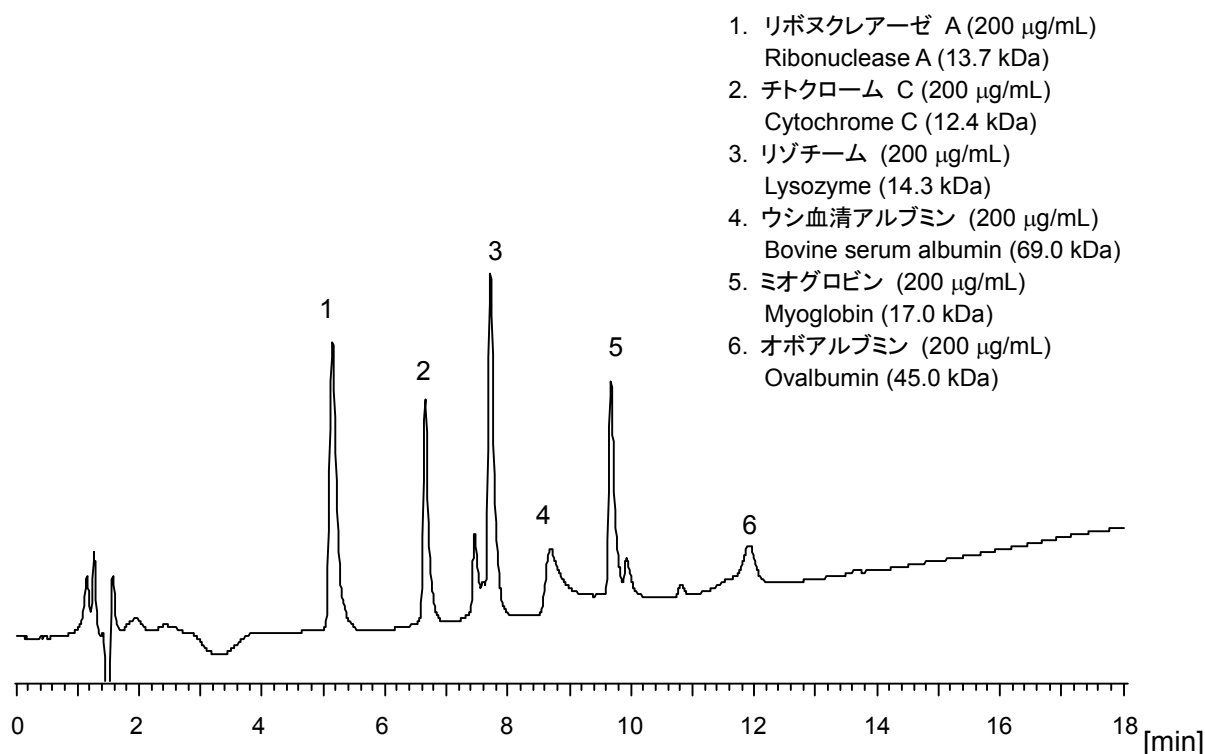


標準タンパク質 6 種類について CAPCELL CORE WP S2.7 (2.1 mm i.d. x 100 mm) を用いた分析例を紹介します。

The chromatogram below was separation of six representative proteins obtained with CAPCELL CORE WP S2.7 (2.1 mm i.d. x 100 mm).



【HPLC Conditions】

Column : CAPCELL CORE WP S2.7 ; 2.1 mm i.d. x 100 mm
 Mobile phase : A) 0.1 vol% TFA, B) 0.1 vol% TFA , CH₃CN
 B 20 % (0 min) → 70 % (20 min) → 20 % (20.1 min) Gradient
 Flow rate : 200 µL/min
 Temperature : 40 °C
 Detection : UV 220 nm
 Inj. vol. : 2 µL
 Sample dissolved in : Each standard was dissolved at 2 mg/mL in H₂O. 100 µL of all solutions were added together, and diluted to 1 mL with H₂O.

※ 1 µg/mL = 1 ppm