

Application guide

Kromasil® AmyCoat™
Kromasil® CelluCoat™



AUTHORIZED DISTRIBUTOR

MZ-Analysentechnik GmbH, Barcelona-Allee 17 • D-55129 Mainz
Tel +49 6131 880 96-0, Fax +49 6131 880 96-20
e-mail: info@mz-at.de, www.mz-at.de

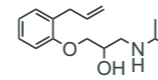
AUTHORIZED DISTRIBUTOR

MZ-Analysentechnik GmbH
Barcelona-Allee 17 • D-55129 Mainz
Tel +49 6131 880 96-0
Fax +49 6131 880 96-20
e-mail: info@mz-at.de
www.mz-at.de

HPLC Applications

Kromasil AmyCoat and Kromasil CelluCoat show a very high selectivity for a wide variety of racemates. In order to support that statement the Kromasil application lab have run acidic, neutral and basic compounds under normal phase HPLC and SFC mode.

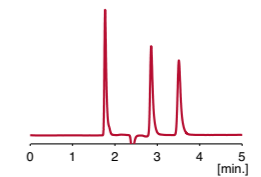
Alprenolol



Conditions:

AmyCoat

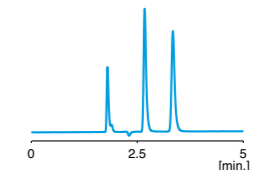
Stationary phase: Kromasil AmyCoat, 3 μ m
 Column: 4.6 x 150 mm
 Mobile phase: Heptane/Ethanol/DEA (90/10/0.1)
 Flow rate: 1 ml/min
 Temperature: 22 °C
 Detection: UV 220 nm



k'_1 0.61
 k'_2 0.98
 N_1 69200
 N_2 72600
 α 1.6
 R_S 5.3

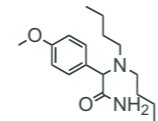
CelluCoat

Stationary phase: Kromasil CelluCoat, 3 μ m
 Column: 4.6 x 150 mm
 Mobile phase: Heptane/Ethanol/DEA (90/10/0.1)
 Flow rate: 1 ml/min
 Temperature: 22 °C
 Detection: UV 220 nm



k'_1 0.49
 k'_2 0.86
 N_1 69900
 N_2 71100
 α 1.8
 R_S 5.7

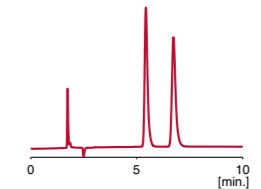
Ambucetamide



Conditions:

AmyCoat

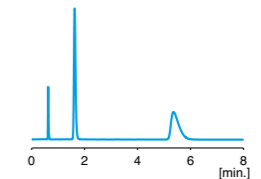
Stationary phase: Kromasil AmyCoat, 3 μ m
 Column: 4.6 x 150 mm
 Mobile phase: Heptane/2-Propanol/DEA (90/10/0.1)
 Flow rate: 1 ml/min
 Temperature: 22 °C
 Detection: UV 229 nm



k'_1 2.13
 k'_2 2.88
 N_1 54200
 N_2 50800
 α 1.4
 R_S 4.8

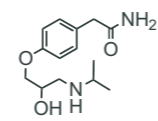
CelluCoat

Stationary phase: Kromasil CelluCoat, 3 μ m
 Column: 4.6 x 150 mm
 Mobile phase: Heptane/2-Propanol/DEA (90/10/0.1)
 Flow rate: 3 ml/min
 Temperature: 22 °C
 Detection: UV 229 nm



k'_1 1.60
 k'_2 7.57
 N_1 22300
 N_2 10500
 α 4.7
 R_S 11.5

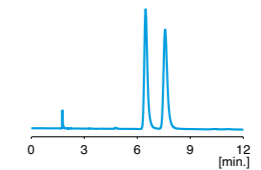
Atenolol



Conditions:

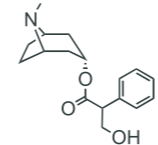
CelluCoat

Stationary phase: Kromasil CelluCoat, 3 μ m
 Column size: 4.6 x 150 mm
 Mobile phase: Heptane/Ethanol/DEA (80/20/0.1)
 Flow rate: 1 ml/min
 Temperature: 22 °C
 Detection: UV 227 nm



k'_1 2.67
 k'_2 3.29
 N_1 43900
 N_2 40500
 α 3.1
 R_S 1.2

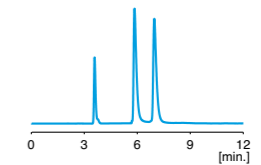
Atropine



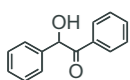
Conditions:

CelluCoat

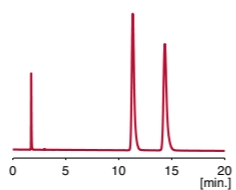
Stationary phase: Kromasil CelluCoat, 3 μ m
 Column size: 4.6 x 150 mm
 Mobile phase: Heptane/Ethanol/DEA (80/20/0.1)
 Flow rate: 0.5 ml/min
 Temperature: 22 °C
 Detection: UV 215 nm



k'_1 0.63
 k'_2 0.94
 N_1 47500
 N_2 52200
 α 1.5
 R_S 3.8

Benzoïn**Conditions:****AmyCoat**

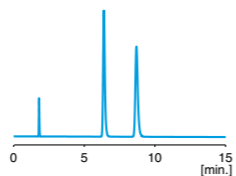
Stationary phase: Kromasil AmyCoat, 3 µm
 Column: 4.6 x 150 mm
 Mobile phase: Heptane/2-Propanol (90/10)
 Flow rate: 1 ml/min
 Temperature: 22 °C
 Detection: UV 250 nm



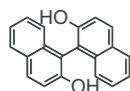
k'_1 5.52
 k'_2 7.26
 N_1 82700
 N_2 80700
 α 1.3
 R_S 6.5

CelluCoat

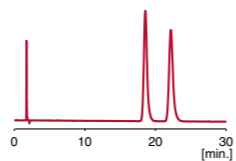
Stationary phase: Kromasil CelluCoat, 3 µm
 Column size: 4.6 x 150 mm
 Mobile phase: Heptane/2-Propanol (90/10)
 Flow rate: 1 ml/min
 Temperature: 22 °C
 Detection: UV 250 nm



k'_1 2.55
 k'_2 3.83
 N_1 86500
 N_2 81400
 α 1.5
 R_S 8.6

Binaphthol**Conditions:****AmyCoat**

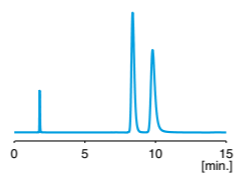
Stationary phase: Kromasil AmyCoat, 3 µm
 Column: 4.6 x 150 mm
 Mobile phase: Heptane/2-Propanol/TFA (90/10/0.1)
 Flow rate: 1 ml/min
 Temperature: 22 °C
 Detection: UV 226 nm



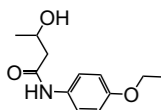
k'_1 9.70
 k'_2 11.79
 N_1 54100
 N_2 52800
 α 1.2
 R_S 4.0

CelluCoat

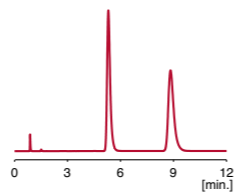
Stationary phase: Kromasil CelluCoat, 3 µm
 Column size: 4.6 x 150 mm
 Mobile phase: Heptane/2-Propanol (90/10)
 Flow rate: 1 ml/min
 Temperature: 22 °C
 Detection: UV 226 nm



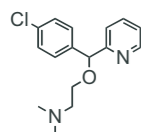
k'_1 3.66
 k'_2 4.44
 N_1 51600
 N_2 36600
 α 1.2
 R_S 3.1

Bucetin**Conditions:****AmyCoat**

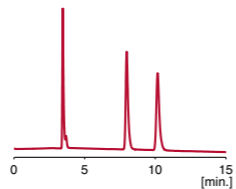
Stationary phase: Kromasil AmyCoat, 3 µm
 Column: 4.6 x 150 mm
 Mobile phase: Heptane/2-Propanol (90/10)
 Flow rate: 2 ml/min
 Temperature: 22 °C
 Detection: UV 254 nm



k'_1 5.02
 k'_2 9.01
 N_1 30900
 N_2 27700
 α 1.8
 R_S 8.2

Carbinoxamine**Conditions:****AmyCoat**

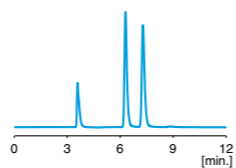
Stationary phase: Kromasil AmyCoat, 3 µm
 Column: 4.6 x 150 mm
 Mobile phase: Heptane/2-Propanol/DEA (90/10/0.1)
 Flow rate: 0.5 ml/min
 Temperature: 22 °C
 Detection: UV 226 nm



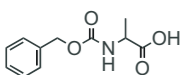
k'_1 1.36
 k'_2 2.04
 N_1 87700
 N_2 90100
 α 1.5
 R_S 7.3

CelluCoat

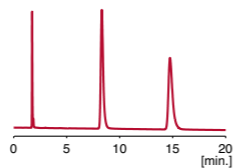
Stationary phase: Kromasil CelluCoat, 3 µm
 Column size: 4.6 x 150 mm
 Mobile phase: Heptane/2-Propanol/DEA (90/10/0.1)
 Flow rate: 0.5 ml/min
 Temperature: 22 °C
 Detection: UV 229 nm



k'_1 0.76
 k'_2 1.03
 N_1 69400
 N_2 71300
 α 1.4
 R_S 3.8

CBZ-Alanine**Conditions:****AmyCoat**

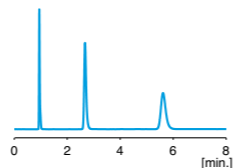
Stationary phase: Kromasil AmyCoat, 3 µm
 Column: 4.6 x 150 mm
 Mobile phase: Heptane/2-Propanol/TFA (90/10/0.1)
 Flow rate: 1 ml/min
 Temperature: 22 °C
 Detection: UV 215 nm



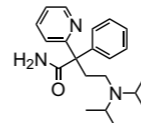
k'_1 3.78
 k'_2 7.49
 N_1 44800
 N_2 50400
 α 2.0
 R_S 11.9

CelluCoat

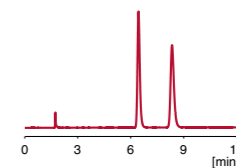
Stationary phase: Kromasil CelluCoat, 3 µm
 Column size: 4.6 x 150 mm
 Mobile phase: Heptane/2-Propanol/TFA (90/10/0.1)
 Flow rate: 2 ml/min
 Temperature: 22 °C
 Detection: UV 215 nm



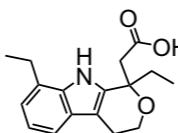
k'_1 1.82
 k'_2 4.93
 N_1 40700
 N_2 31200
 α 2.7
 R_S 12.7

Disopyramide**Conditions:****AmyCoat**

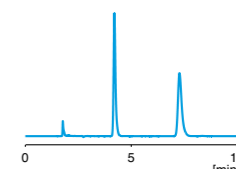
Stationary phase: Kromasil AmyCoat, 3 µm
 Column: 4.6 x 150 mm
 Mobile phase: Heptane/Ethanol/DEA (97/3/0.1)
 Flow rate: 1 ml/min
 Temperature: 25 °C
 Detection: UV 254 nm



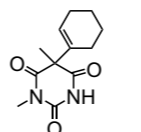
k'_1 2.72
 k'_2 3.82
 N_1 76300
 N_2 64200
 α 1.4
 R_S 6.6

Etodolac**Conditions:****CelluCoat**

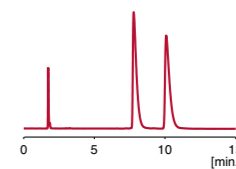
Stationary phase: Kromasil CelluCoat, 3 µm
 Column size: 4.6 x 150 mm
 Mobile phase: Heptane/Ethanol/TFA (95/5/0.1)
 Flow rate: 1 ml/min
 Temperature: 25 °C
 Detection: UV 254 nm



k'_1 1.37
 k'_2 3.11
 N_1 76400
 N_2 57100
 α 2.3
 R_S 13.1

Hexobarbital**Conditions:****AmyCoat**

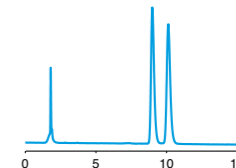
Stationary phase: Kromasil AmyCoat, 3 µm
 Column: 4.6 x 150 mm
 Mobile phase: Heptane/2-Propanol (90/10)
 Flow rate: 1 ml/min
 Temperature: 22 °C
 Detection: UV 230 nm



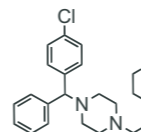
k'_1 3.49
 k'_2 4.81
 N_1 33400
 N_2 35500
 α 1.4
 R_S 4.7

CelluCoat

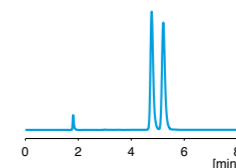
Stationary phase: Kromasil CelluCoat, 3 µm
 Column: 4.6 x 150 mm
 Mobile phase: Heptane/2-Propanol (90/10)
 Flow rate: 1 ml/min
 Temperature: 22 °C
 Detection: UV 230 nm



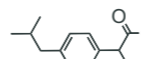
k'_1 3.99
 k'_2 4.60
 N_1 55000
 N_2 53700
 α 1.2
 R_S 2.7

Hydroxyzine**Conditions:****CelluCoat**

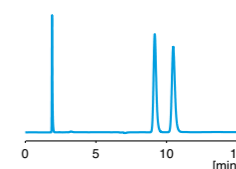
Stationary phase: Kromasil CelluCoat, 3 µm
 Column size: 4.6 x 150 mm
 Mobile phase: Heptane/Ethanol/DEA (95/5/0.1)
 Flow rate: 1 ml/min
 Temperature: 22 °C
 Detection: UV 229 nm



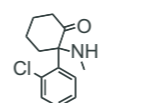
k'_1 1.64
 k'_2 1.88
 N_1 69500
 N_2 67500
 α 1.2
 R_S 2.2

Ibuprofen**Conditions:****CelluCoat**

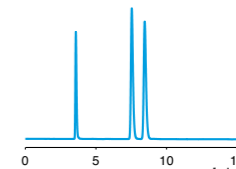
Stationary phase: Kromasil CelluCoat, 3 µm
 Column size: 4.6 x 150 mm
 Mobile phase: Heptane/2-Propanol/TFA (99/1/0.1)
 Flow rate: 1 ml/min
 Temperature: 22 °C
 Detection: UV 222 nm



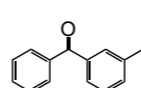
k'_1 3.83
 k'_2 4.52
 N_1 73500
 N_2 72100
 α 1.2
 R_S 3.5

Ketamine**Conditions:****CelluCoat**

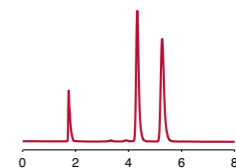
Stationary phase: Kromasil CelluCoat, 3 µm
 Column size: 4.6 x 150 mm
 Mobile phase: Heptane/2-Propanol/DEA (90/10/0.1)
 Flow rate: 0.5 ml/min
 Temperature: 22 °C
 Detection: UV 223 nm



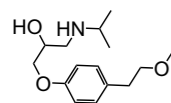
k'_1 1.11
 k'_2 1.36
 N_1 86500
 N_2 86700
 α 1.2
 R_S 3.3

Ketoprofen**Conditions:****AmyCoat**

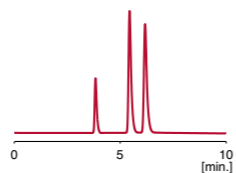
Stationary phase: Kromasil AmyCoat, 3 µm
 Column: 4.6 x 150 mm
 Mobile phase: Heptane/2-Propanol/TFA (90/10/0.1)
 Flow rate: 1 ml/min
 Temperature: 22 °C
 Detection: UV 215 nm



k'_1 1.49
 k'_2 2.03
 N_1 63700
 N_2 55600
 α 1.4
 R_S 4.6

Metoprolol**Conditions:****AmyCoat**

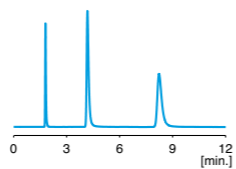
Stationary phase: Kromasil AmyCoat, 3 μ m
 Column: 4.6 x 150 mm
 Mobile phase: Methanol/DEA (100/0.1)
 Flow rate: 0.5 ml/min
 Temperature: 22 °C
 Detection: UV 223 nm



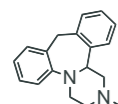
k'_1 0.42
 k'_2 0.61
 N_1 66800
 N_2 68000
 α 1.5
 R_S 3.2

CelluCoat

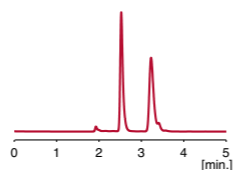
Stationary phase: Kromasil CelluCoat, 3 μ m
 Column size: 4.6 x 150 mm
 Mobile phase: Heptane/2-Propanol/DEA (90/10/0.1)
 Flow rate: 1 ml/min
 Temperature: 22 °C
 Detection: UV 223 nm



k'_1 1.32
 k'_2 3.57
 N_1 46900
 N_2 35900
 α 2.7
 R_S 12.6

Mianserin**Conditions:****AmyCoat**

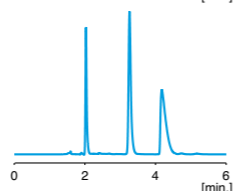
Stationary phase: Kromasil AmyCoat, 3 μ m
 Column: 4.6 x 150 mm
 Mobile phase: Methanol/DEA (100/0.1)
 Flow rate: 1 ml/min
 Temperature: 22 °C
 Detection: UV 254 nm



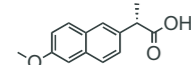
k'_1 0.31
 k'_2 0.68
 N_1 56300
 N_2 33900
 α 2.2
 R_S 3.0

CelluCoat

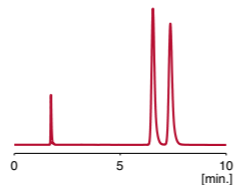
Stationary phase: Kromasil CelluCoat, 3 μ m
 Column size: 4.6 x 150 mm
 Mobile phase: Methanol/DEA (100/0.1)
 Flow rate: 1 ml/min
 Temperature: 22 °C
 Detection: UV 220 nm



k'_1 0.61
 k'_2 1.50
 N_1 85100
 N_2 25400
 α 1.7
 R_S 4.8

Naproxen**Conditions:****AmyCoat**

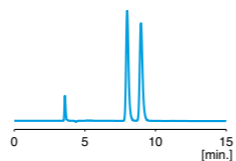
Stationary phase: Kromasil AmyCoat, 3 μ m
 Column: 4.6 x 150 mm
 Mobile phase: Heptane/2-Propanol/TFA (90/10/0.1)
 Flow rate: 1 ml/min
 Temperature: 22 °C
 Detection: UV 226 nm



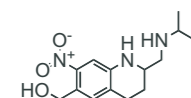
k'_1 2.56
 k'_2 3.05
 N_1 74500
 N_2 73700
 α 1.2
 R_S 3.4

CelluCoat

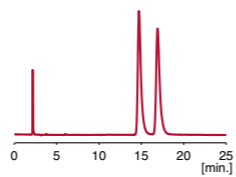
Stationary phase: Kromasil CelluCoat, 3 μ m
 Column size: 4.6 x 150 mm
 Mobile phase: Heptane/2-Propanol/TFA (90/10/0.1)
 Flow rate: 0.5 ml/min
 Temperature: 22 °C
 Detection: UV 226 nm



k'_1 1.23
 k'_2 1.50
 N_1 67700
 N_2 66000
 α 1.2
 R_S 2.9

Oxamniquine**Conditions:****AmyCoat**

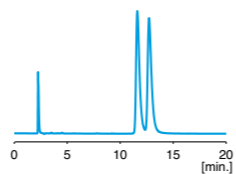
Stationary phase: Kromasil AmyCoat, 3 μ m
 Column: 4.6 x 150 mm
 Mobile phase: Heptane/2-Propanol/DEA (90/10/0.1)
 Flow rate: 0.8 ml/min
 Temperature: 22 °C
 Detection: UV 253 nm



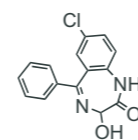
k'_1 5.82
 k'_2 6.89
 N_1 53200
 N_2 55500
 α 1.2
 R_S 3.3

CelluCoat

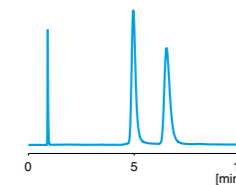
Stationary phase: Kromasil CelluCoat, 3 μ m
 Column: 4.6 x 150 mm
 Mobile phase: Heptane/2-Propanol/DEA (90/10/0.1)
 Flow rate: 0.8 ml/min
 Temperature: 22 °C
 Detection: UV 253 nm



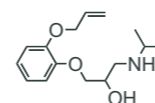
k'_1 4.16
 k'_2 4.65
 N_1 42900
 N_2 41400
 α 1.1
 R_S 1.8

Oxazepam**Conditions:****CelluCoat**

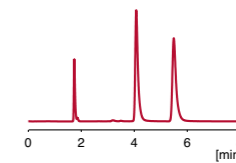
Stationary phase: Kromasil CelluCoat, 3 μ m
 Column size: 4.6 x 150 mm
 Mobile phase: Heptane/2-Propanol/DEA (85/15/0.1)
 Flow rate: 2 ml/min
 Temperature: 22 °C
 Detection: UV 228 nm



k'_1 4.41
 k'_2 6.12
 N_1 22600
 N_2 19400
 α 1.4
 R_S 3.8

Oxprenolol**Conditions:****AmyCoat**

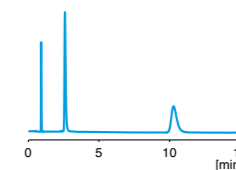
Stationary phase: Kromasil AmyCoat, 3 μ m
 Column: 4.6 x 150 mm
 Mobile phase: Heptane/2-Propanol/DEA (90/10/0.1)
 Flow rate: 1 ml/min
 Temperature: 22 °C
 Detection: UV 227 nm



k'_1 1.35
 k'_2 2.16
 N_1 56400
 N_2 56400
 α 1.6
 R_S 6.8

CelluCoat

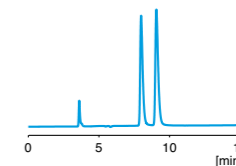
Stationary phase: Kromasil CelluCoat, 3 μ m
 Column size: 4.6 x 150 mm
 Mobile phase: Heptane/2-Propanol/DEA (90/10/0.1)
 Flow rate: 2 ml/min
 Temperature: 22 °C
 Detection: UV 227 nm



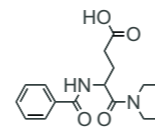
k'_1 1.86
 k'_2 10.32
 N_1 31500
 N_2 23000
 α 5.6
 R_S 18.1

1-Phenylethylamine**Conditions:****CelluCoat**

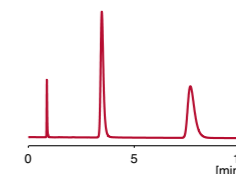
Stationary phase: Kromasil CelluCoat, 3 μ m
 Column size: 4.6 x 150 mm
 Mobile phase: Heptane/2-Propanol/DEA (90/10/0.1)
 Flow rate: 0.5 ml/min
 Temperature: 22 °C
 Detection: UV 220 nm



k'_1 1.21
 k'_2 1.51
 N_1 68000
 N_2 67600
 α 1.3
 R_S 3.2

Proglumide**Conditions:****AmyCoat**

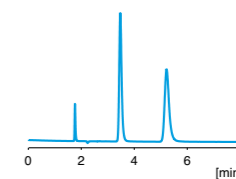
Stationary phase: Kromasil AmyCoat, 3 μ m
 Column: 4.6 x 150 mm
 Mobile phase: Heptane/2-Propanol/TFA (90/10/0.1)
 Flow rate: 2 ml/min
 Temperature: 22 °C
 Detection: UV 228 nm



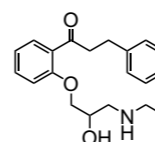
k'_1 3.05
 k'_2 8.20
 N_1 29100
 N_2 22800
 α 2.7
 R_S 11.8

CelluCoat

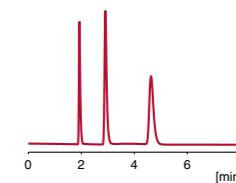
Stationary phase: Kromasil CelluCoat, 3 μ m
 Column size: 4.6 x 150 mm
 Mobile phase: Heptane/2-Propanol/TFA (90/10/0.1)
 Flow rate: 1 ml/min
 Temperature: 22 °C
 Detection: UV 228 nm



k'_1 0.97
 k'_2 1.96
 N_1 47000
 N_2 32800
 α 2.0
 R_S 7.6

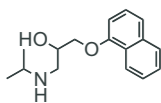
Propafenone**Conditions:****AmyCoat**

Stationary phase: Kromasil AmyCoat, 3 μ m
 Column: 4.6 x 150 mm
 Mobile phase: Methanol/DEA (100/0.1)
 Flow rate: 1 ml/min
 Temperature: 22 °C
 Detection: UV 221 nm



k'_1 0.50
 k'_2 1.40
 N_1 46300
 N_2 27200
 α 2.8
 R_S 8.1

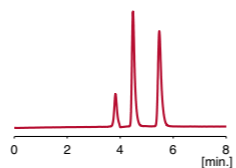
Propranolol



Conditions:

AmyCoat

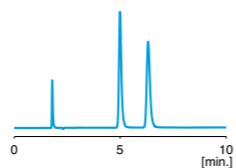
Stationary phase: Kromasil AmyCoat, 3 μ m
Column: 4.6 x 150 mm
Mobile phase: Methanol/DEA (100/0.1)
Flow rate: 0.5 ml/min
Temperature: 22 °C
Detection: UV 220 nm



k'_1 0.17
 k'_2 0.43
 N_1 63400
 N_2 65700
 α 2.5
 R_S 4.9

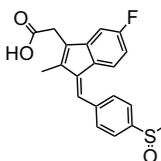
CelluCoat

Stationary phase: Kromasil CelluCoat, 3 μ m
Column size: 4.6 x 150 mm
Mobile phase: Heptane/Ethanol/DEA (90/10/0.1)
Flow rate: 1 ml/min
Temperature: 22 °C
Detection: UV 225 nm



k'_1 1.78
 k'_2 2.52
 N_1 65500
 N_2 54900
 α 1.4
 R_S 5.6

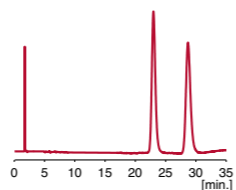
Sulindac



Conditions:

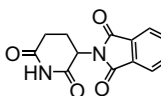
AmyCoat

Stationary phase: Kromasil AmyCoat, 3 μ m
Column: 4.6 x 150 mm
Mobile phase: Heptane/2-Propanol/TFA (90/10/0.1)
Flow rate: 1 ml/min
Temperature: 22 °C
Detection: UV 226 nm



k'_1 12.20
 k'_2 15.60
 N_1 50000
 N_2 49500
 α 1.3
 R_S 4.8

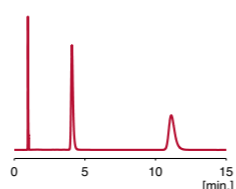
Thalidomide



Conditions:

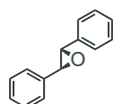
AmyCoat

Stationary phase: Kromasil AmyCoat, 3 μ m
Column: 4.6 x 150 mm
Mobile phase: Methanol
Flow rate: 2 ml/min
Temperature: 22 °C
Detection: UV 220 nm



k'_1 3.21
 k'_2 10.46
 N_1 29700
 N_2 23100
 α 3.3
 R_S 14.1

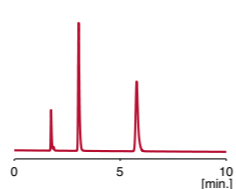
trans-Stilbene oxide



Conditions:

AmyCoat

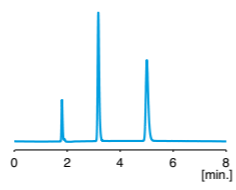
Stationary phase: Kromasil AmyCoat, 3 μ m
Column: 4.6 x 150 mm
Mobile phase: Heptane/2-Propanol (90/10)
Flow rate: 1 ml/min
Temperature: 22 °C
Detection: UV 229 nm



k'_1 0.75
 k'_2 2.33
 N_1 85500
 N_2 91300
 α 3.1
 R_S 18.0

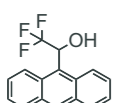
CelluCoat

Stationary phase: Kromasil CelluCoat, 3 μ m
Column size: 4.6 x 150 mm
Mobile phase: Heptane/2-Propanol (90/10)
Flow rate: 1 ml/min
Temperature: 22 °C
Detection: UV 229 nm



k'_1 0.76
 k'_2 1.78
 N_1 94300
 N_2 91000
 α 2.3
 R_S 13.2

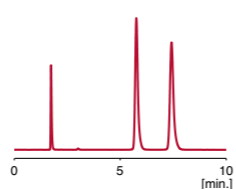
Trifluoro-anthrylethanol



Conditions:

AmyCoat

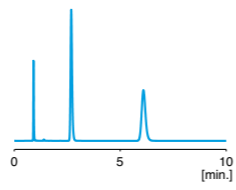
Stationary phase: Kromasil AmyCoat, 3 μ m
Column: 4.6 x 150 mm
Mobile phase: Heptane/2-Propanol (90/10)
Flow rate: 1 ml/min
Temperature: 22 °C
Detection: UV 255 nm



k'_1 2.32
 k'_2 3.27
 N_1 69100
 N_2 68400
 α 1.4
 R_S 6.4

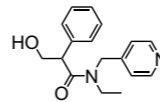
CelluCoat

Stationary phase: Kromasil CelluCoat, 3 μ m
Column size: 4.6 x 150 mm
Mobile phase: Heptane/2-Propanol (90/10)
Flow rate: 2 ml/min
Temperature: 22 °C
Detection: UV 255 nm



k'_1 1.96
 k'_2 5.70
 N_1 43900
 N_2 35800
 α 2.9
 R_S 14.7

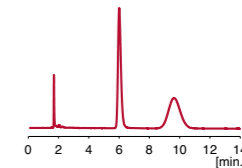
Tropicamide



Conditions:

AmyCoat

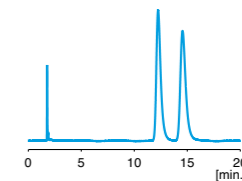
Stationary phase: Kromasil AmyCoat, 3 μ m
Column: 4.6 x 150 mm
Mobile phase: Heptane/2-Propanol (80/20)
Flow rate: 1 ml/min
Temperature: 25 °C
Detection: UV 220 nm



k'_1 2.55
 k'_2 4.68
 N_1 31000
 N_2 4600
 α 1.8
 R_S 4.0

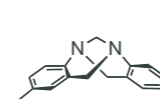
CelluCoat

Stationary phase: Kromasil CelluCoat, 3 μ m
Column size: 4.6 x 150 mm
Mobile phase: Heptane/2-Propanol (90/10)
Flow rate: 1 ml/min
Temperature: 25 °C
Detection: UV 220 nm



k'_1 5.91
 k'_2 7.21
 N_1 29700
 N_2 28000
 α 1.2
 R_S 2.8

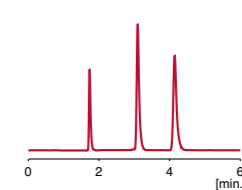
Tröger's Base



Conditions:

AmyCoat

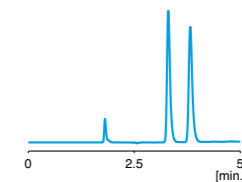
Stationary phase: Kromasil AmyCoat, 3 μ m
Column: 4.6 x 150 mm
Mobile phase: Heptane/2-Propanol/DEA (90/10/0.1)
Flow rate: 1 ml/min
Temperature: 22 °C
Detection: UV 220 nm



k'_1 0.78
 k'_2 1.39
 N_1 72000
 N_2 69100
 α 1.8
 R_S 7.4

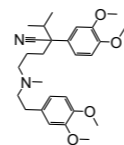
CelluCoat

Stationary phase: Kromasil CelluCoat, 3 μ m
Column size: 4.6 x 150 mm
Mobile phase: Heptane/2-Propanol/DEA (90/10/0.1)
Flow rate: 1 ml/min
Temperature: 22 °C
Detection: UV 220 nm



k'_1 0.83
 k'_2 1.11
 N_1 70400
 N_2 69900
 α 1.4
 R_S 3.7

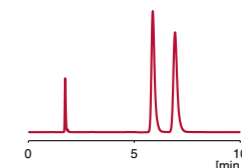
Verapamil



Conditions:

AmyCoat

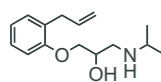
Stationary phase: Kromasil AmyCoat, 3 μ m
Column: 4.6 x 150 mm
Mobile phase: Heptane/2-Propanol/DEA (90/10/0.1)
Flow rate: 1 ml/min
Temperature: 22 °C
Detection: UV 230 nm



k'_1 2.38
 k'_2 2.98
 N_1 52100
 N_2 48400
 α 1.3
 R_S 3.6

SFC Applications

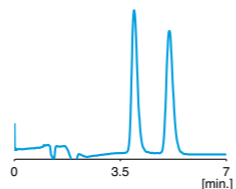
Alprenolol



Conditions:

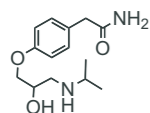
CelluCoat

Stationary phase: Kromasil CelluCoat, 5 μ m
 Column: 4.6 x 250 mm
 Mobile phase: CO₂/Ethanol/DEA (90/10/0.1)
 Flow rate: 4 ml/min
 Temperature: 40 °C
 Outlet pressure: 100 bar
 Detection: UV 220 nm



k'_1 2.04
 k'_2 2.92
 N_1 28000
 N_2 32900
 α 1.4
 R_S 6.3

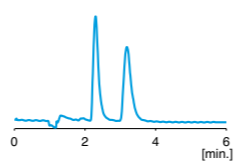
Atenolol



Conditions:

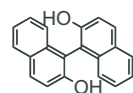
CelluCoat

Stationary phase: Kromasil CelluCoat, 5 μ m
 Column: 4.6 x 250 mm
 Mobile phase: CO₂/Ethanol/DEA(70/30/0.1)
 Flow rate: 4 ml/min
 Temperature: 40 °C
 Outlet pressure: 100 bar
 Detection: UV 220 nm



k'_1 1.29
 k'_2 2.17
 N_1 14900
 N_2 14800
 α 1.7
 R_S 4.9

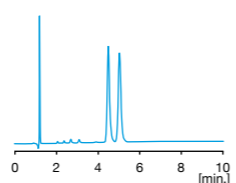
Binaphthol



Conditions:

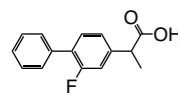
CelluCoat

Stationary phase: Kromasil CelluCoat, 3 μ m
 Column size: 4.6 x 250 mm
 Mobile phase: CO₂/Methanol/IPEA (75/15/0.5)
 Flow rate: 3 ml/min
 Temperature: 30 °C
 Outlet pressure: 100 bar
 Detection: UV 220 nm



k'_1 2.73
 k'_2 3.17
 N_1 29700
 N_2 31000
 α 1.2
 R_S 2.5

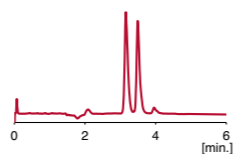
Flurbiprofen



Conditions:

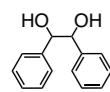
AmyCoat

Stationary phase: Kromasil AmyCoat, 5 μ m
 Column: 4.6 x 250 mm
 Mobile phase: CO₂/Methanol(80/20)
 Flow rate: 3 ml/min
 Temperature: 40 °C
 Outlet pressure: 150 bar
 Detection: UV 220 nm



k'_1 1.42
 k'_2 1.68
 N_1 75500
 N_2 137900
 α 1.2
 R_S 4.0

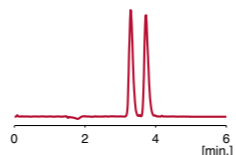
Hydrobenzoin



Conditions:

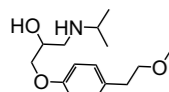
AmyCoat

Stationary phase: Kromasil AmyCoat, 5 μ m
 Column: 4.6 x 250 mm
 Mobile phase: CO₂/Methanol(80/20)
 Flow rate: 3 ml/min
 Temperature: 40 °C
 Outlet pressure: 150 bar
 Detection: UV 220 nm



k'_1 1.52
 k'_2 1.86
 N_1 50700
 N_2 65000
 α 1.2
 R_S 3.8

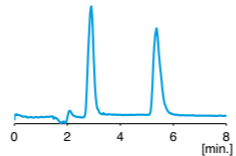
Metoprolol



Conditions:

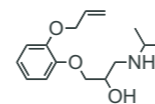
CelluCoat

Stationary phase: Kromasil CelluCoat, 5 μ m
 Column: 4.6 x 250 mm
 Mobile phase: CO₂/Ethanol/DEA(85/15/0.1)
 Flow rate: 3 ml/min
 Temperature: 40 °C
 Outlet pressure: 150 bar
 Detection: UV 220 nm



k'_1 1.23
 k'_2 3.12
 N_1 11500
 N_2 22800
 α 2.5
 R_S 9.8

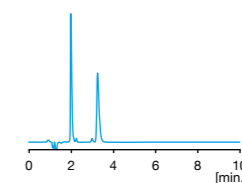
Oxprenolol



Conditions:

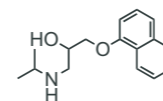
CelluCoat

Stationary phase: Kromasil CelluCoat, 3 μ m
 Column size: 4.6 x 250 mm
 Mobile phase: CO₂/Methanol/IPEA (80/20/0.5)
 Flow rate: 3 ml/min
 Temperature: 30 °C
 Outlet pressure: 100 bar
 Detection: UV 220 nm



k'_1 0.64
 k'_2 1.68
 N_1 27100
 N_2 18700
 α 2.6
 R_S 8.8

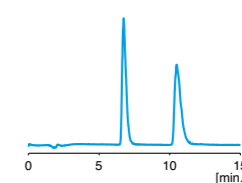
Propranolol



Conditions:

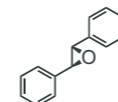
CelluCoat

Stationary phase: Kromasil CelluCoat, 5 μ m
 Column: 4.6 x 250 mm
 Mobile phase: CO₂/Ethanol/DEA (85/15/0.1)
 Flow rate: 3 ml/min
 Temperature: 40 °C
 Outlet pressure: 150 bar
 Detection: UV 220 nm



k'_1 3.49
 k'_2 5.98
 N_1 32200
 N_2 33400
 α 1.7
 R_S 9.9

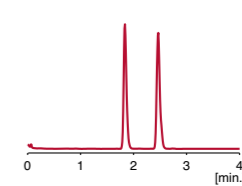
trans-Stilbene oxide



Conditions:

AmyCoat

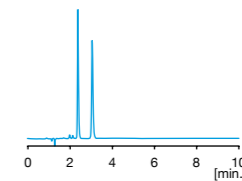
Stationary phase: Kromasil AmyCoat, 5 μ m
 Column: 4.6 x 250 mm
 Mobile phase: CO₂/Methanol (80/20)
 Flow rate: 3 ml/min
 Temperature: 40 °C
 Outlet pressure: 150 bar
 Detection: UV 220 nm



k'_1 1.29
 k'_2 2.06
 N_1 86000
 N_2 154100
 α 1.6
 R_S 12.4

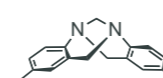
CelluCoat

Stationary phase: Kromasil CelluCoat, 3 μ m
 Column size: 4.6 x 250 mm
 Mobile phase: CO₂/Methanol/IPEA (80/20/0.5)
 Flow rate: 3 ml/min
 Temperature: 30 °C
 Outlet pressure: 100 bar
 Detection: UV 220 nm



k'_1 0.98
 k'_2 1.54
 N_1 62400
 N_2 52000
 α 1.6
 R_S 7.4

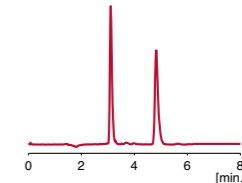
Tröger's Base



Conditions:

AmyCoat

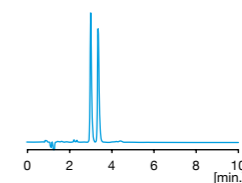
Stationary phase: Kromasil AmyCoat, 5 μ m
 Column: 4.6 x 250 mm
 Mobile phase: CO₂/Methanol (80/20)
 Flow rate: 3 ml/min
 Temperature: 40 °C
 Outlet pressure: 150 bar
 Detection: UV 220 nm



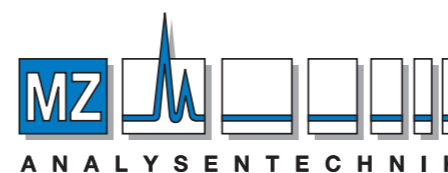
k'_1 1.38
 k'_2 2.70
 N_1 108200
 N_2 109000
 α 2.0
 R_S 17.8

CelluCoat

Stationary phase: Kromasil CelluCoat, 3 μ m
 Column size: 4.6 x 250 mm
 Mobile phase: CO₂/Methanol/IPEA (80/20/0.5)
 Flow rate: 3 ml/min
 Temperature: 30 °C
 Outlet pressure: 100 bar
 Detection: UV 220 nm



k'_1 1.50
 k'_2 1.80
 N_1 39700
 N_2 39800
 α 1.2
 R_S 2.8



AUTHORIZED DISTRIBUTOR

MZ-Analysentechnik GmbH, Barcelona-Allee 17 • D-55129 Mainz

Tel +49 6131 880 96-0, Fax +49 6131 880 96-20

e-mail: info@mz-at.de, www.mz-at.de