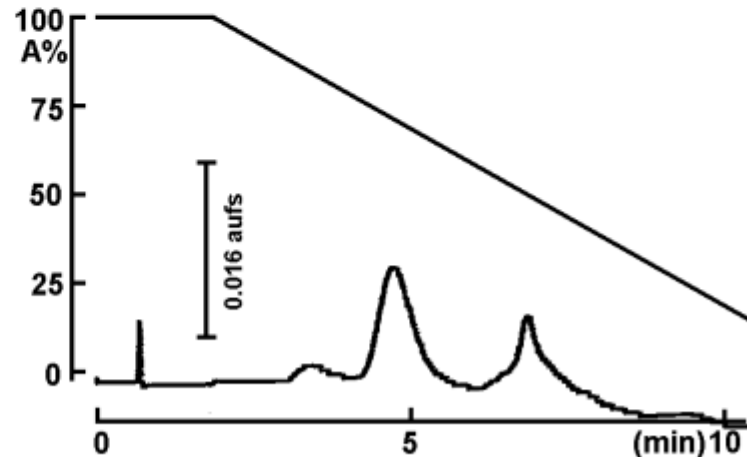


COSMOSIL Chromatogram Index

Sample: Glycoprotein
Source: Bovine
Column: 5HIC
Column size: 4.6mm I.D. - 50mm
Mobile phase: A: 20mM phosphate buffer+100mM Na₂SO₄+2.0M (NH₄)₂SO₄ (pH 6.0)
B: 20mM phosphate buffer+100mM Na₂SO₄ (pH 6.7)
Gradient: A→B/10min linear gradient
Flow rate: 1.0 ml/min
Temperature: 30°C
Detection: UV 220nm
Attenuation: 0.16 aufs
Sample conc.: 3.0 mg/ml
Injection volume: 1.5 µl
Retention time: 4.75 min
6.87 min



NACALAI TESQUE, INC