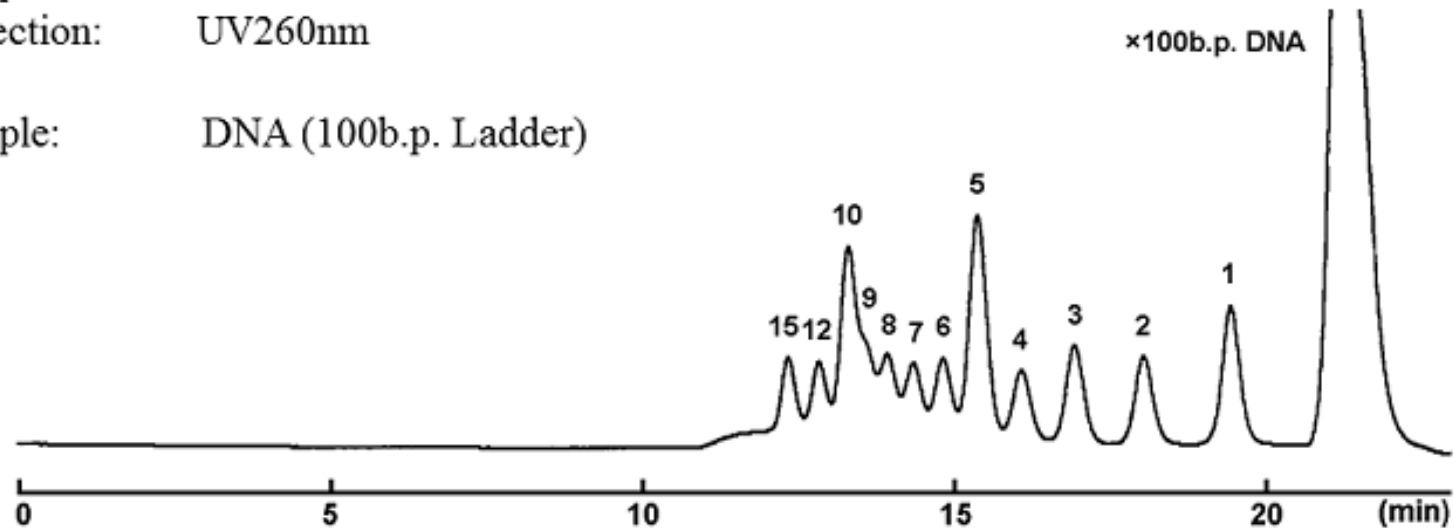


# COSMOSIL Application Data

Column: Diol-1000-II + Diol-2000-II  
Column size: 7.5mm I.D.-300mm × 2  
Mobile phase: 20mmol/l Phosphate buffer(pH7), 100mmol/l Na<sub>2</sub>SO<sub>4</sub>  
Flow rate: 1.0 ml/min  
Temperature: 30°C  
Detection: UV260nm

Sample: DNA (100b.p. Ladder)



NACALAI TESQUE, INC

AP-1480