

COSMOSIL Application Data

Column: COSMOSIL 3C₁₈-EB
Column size: 2.0 mmI.D.-100 mm
Mobile phase: **
Flow rate: 0.2 ml/min
Temperature: 40 °C
Detection: UV260 nm

Sample: Oligonucleotides

1;A T A C G G G A G G G C T T A C C A T C
2;A*T*A*C*G*G*G*A*G*G*G*C*I*T*A*C*C*A*T C
3;A*T*A*C*G*G*G*A*G*G*G*C*I*T*A*C*C*A*T*C

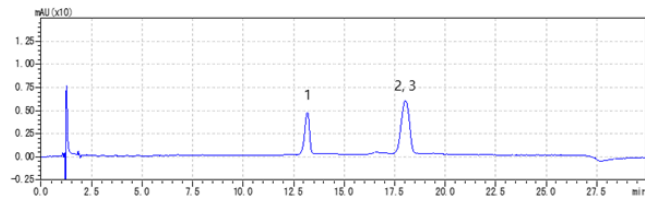
The positions of phosphorothioates are indicated by “*”.

Mobile phase:

A; 0.4 mol/L 1,1,1,3,3,3-Hexafluoro-2-propanol
(pH7.0 with Triethylamine)

B; Methanol

B conc. 20 → 25 % (0→20 min), 25 % (20-24 min)

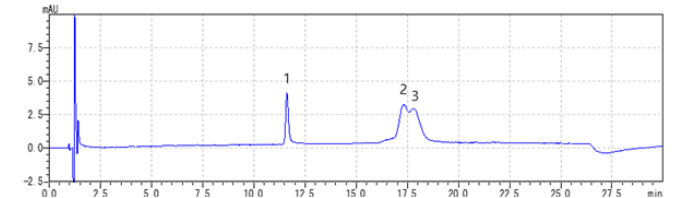


Mobile phase:

A; 50 mmol/L *n*-Hexylamine, 50 mmol/L Acetic Acid

B; Acetonitrile

B conc. 30 → 40 % (0→20 min), 40 % (20-24 min)



NACALAI TESQUE, INC

AP-1747