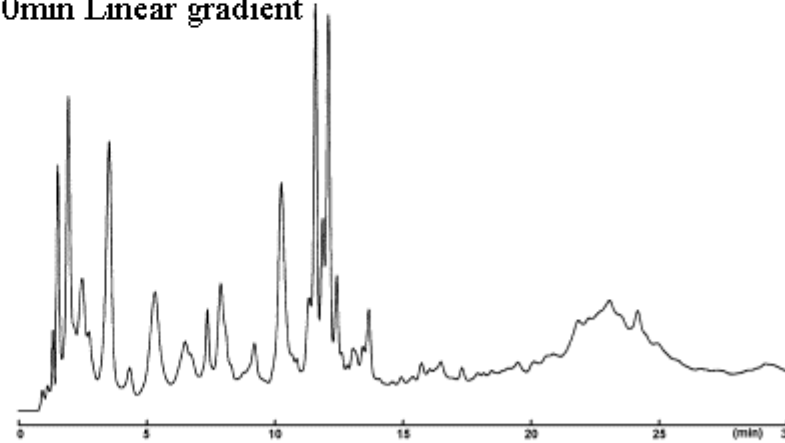


COSMOSIL Application Data

Column: COSMOGEL IEX Type Q
Column size: 4.6mm I.D. - 50mm
Mobile phase: A: 20mmol/l Tris buffer (pH 8.3)
B: 20mmol/l Tris buffer (pH 8.3)
+ 0.5mol/l NaCl
B conc. 0 → 100% 30min Linear gradient

Flow rate: 0.5 ml/min
Temperature: 30°C
Detection: UV 220nm

Sample: E. coli Proteins



NACALAI TESQUE, INC

AP-1158