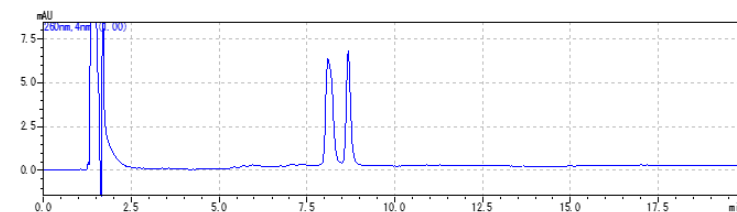


COSMOCORE Application Data

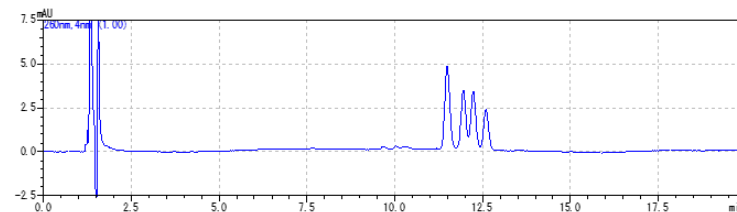
Column: COSMOCORE **
Column size: 2.1 mm I.D.-100 mm
Mobile phase: A; 100 mmol/L Triethylamine,
100 mmol/L Acetic Acid (pH7.0)
B; Acetonitrile
B conc. **→** % (0→20 min)
Flow rate: 0.2 ml/min
Temperature: 40 °C
Detection: UV260 nm
Sample: Oligonucleotides (5 µmol/L)
Oligo (dT) 19-S17,18 [TTTTTTTTTTTTTTTT**T*T]
Inj. Vol.: 1.0 µl

The positions of phosphorothioates are indicated by "**".

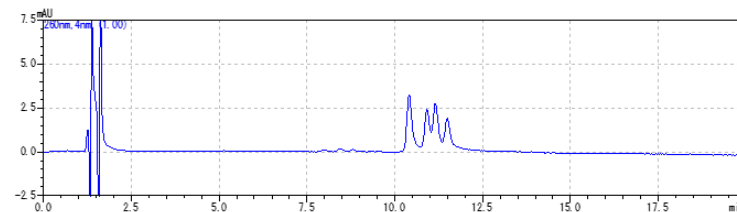
COSMOCORE 2.6C₁₈
(B.conc. 12→17 %)



COSMOCORE 2.6Cholesterol
(B.conc. 13→18 %)



COSMOCORE 2.6PBr
(B.conc. 18→23 %)



NACALAI TESQUE, INC

AP-1778