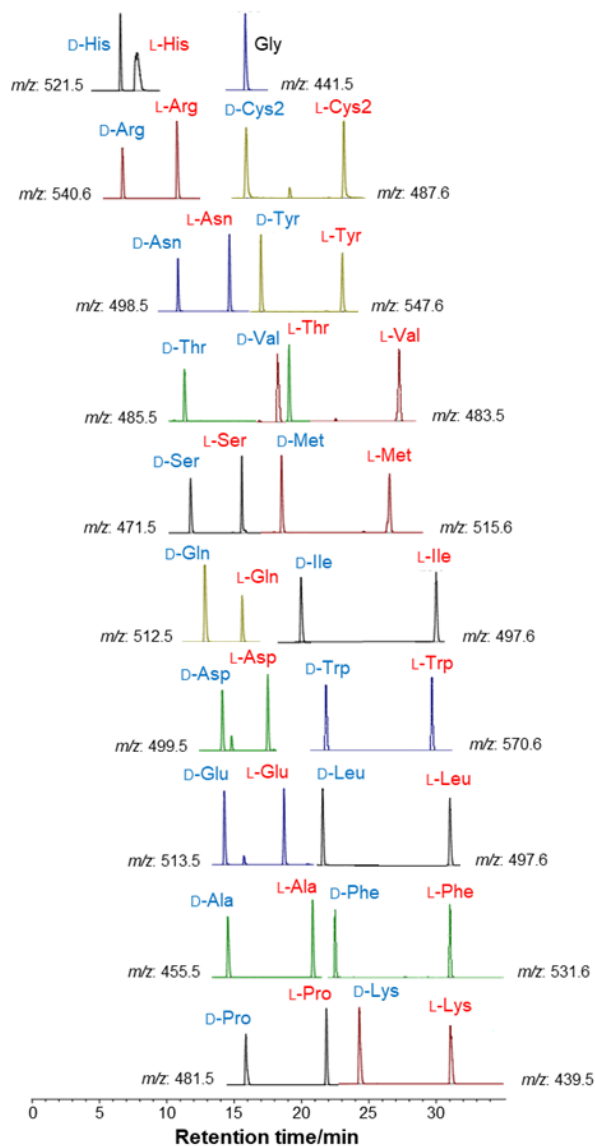


COSMOCORE Application Data

Column: COSMOCORE 2.6C₁₈
 Column size: 2.1 mmI.D.-100 mm
 Mobile phase: A; 0.1% Formic Acid-Acetonitrile/ H₂O = 10/90
 B; 0.1% Formic Acid-Acetonitrile/ H₂O = 50/50
 B conc. 0→10 % (0→5 min), 10→60 % (5→30 min),
 60→100 % (30→35 min)
 Flow rate: 0.4 ml/min
 Temperature: 40 °C
 Detection: ESI(+)-MS
 Sample: D-DLDA-DL-Amino Acids Mixture
 Derivatization: DL-Amino Acid Labeling Kit



AP-1879