



Supel[™] Carbon LC column

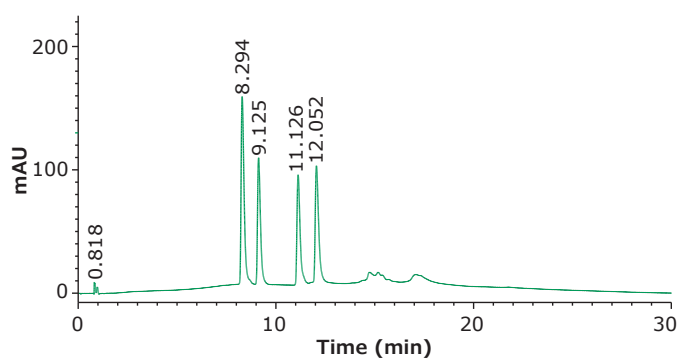
Porous Graphitic Carbon (PGC) particle packed column for separating poorly retained, polar compounds.

Supel[™] Carbon LC particles offer a unique retention mechanism that can retain polar compounds under reversed-phase conditions. This same retention mechanism can also lead to resolution of geometric isomers of compounds.

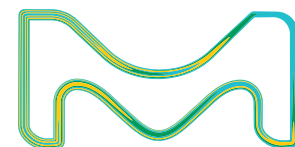
Supel[™] Carbon LC Specifications

Particle Platform	Porous Graphitic Carbon (PGC)
Particle Size	2.7 μm
Pore Size	200 Å
Surface Area	155 m^2/g
pH Range	1 - 14
Maximum Temperature	250 $^{\circ}\text{C}$

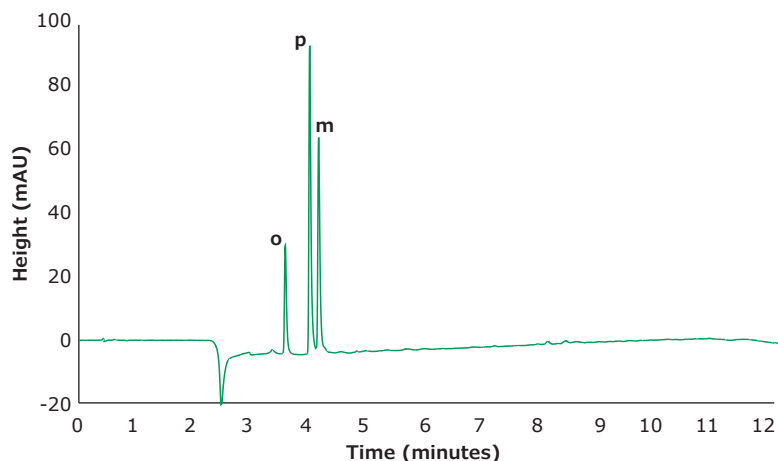
Peaks	Compound	Ret. Time (min)
1	3-epi-25-hydroxyvitamin D3 (50 $\mu\text{g}/\text{mL}$)	8.294
2	25-hydroxyvitamin D3 (25 $\mu\text{g}/\text{mL}$)	9.125
3	3-epi-25-hydroxyvitamin D2 (50 $\mu\text{g}/\text{mL}$)	11.126
4	25-hydroxyvitamin D2 (100 $\mu\text{g}/\text{mL}$)	12.052



Chromatographic separation of Vitamin D2 and D3 metabolites on Supel[™] Carbon LC. Conditions: Column: Supel Carbon[™] LC, 10 cm x 2.1 mm I.D., 2.7 μm ; Mobile Phase: [A] 2-Propanol; [B] Tetrahydrofuran; Gradient: 0% B to 70% B in 15 min; hold at 70% B for 5 min; Flow Rate: 0.3 mL/min; Column Temp.: 25 $^{\circ}\text{C}$; Detector: UV, 275 nm; Injection: 2.0 μL ; Sample: Vitamin D2 and D3 metabolites mix, varied concentration, ethanol



Separation of Toluic Acid Isomers on Supel™ Carbon LC



Column: Supel™ Carbon LC;
5 cm x 3.0 mm I.D., 2.7 µm

Mobile Phase: [A] 20 mM ammonium bicarbonate in water, pH 9.0 with ammonium hydroxide [B] acetonitrile

Gradient: Hold at 0% B for 1 minute; 0% B to 100% B in 10 minutes; Hold at 100% B for 1 minute

Flow Rate: 0.6 mL/min

Column Temp: 50 °C

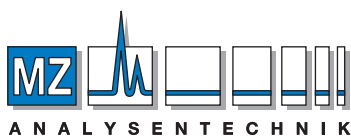
Detector: UV, 230 nm

Sampling Rate: 20 Hz

Injection: 0.750 µL

Sample: m/o/p-toluic acid, 67 µg/mL in water

Product	I.D. (mm)	Length (cm)	Content	Cat. No.
Supel™ Carbon LC column	2.1	10	1 U/HPLC Column	59986-U
Supel™ Carbon LC column	3.0	10	1 U/HPLC Column	59993-U
Supel™ Carbon LC column	4.6	10	1 U/HPLC Column	59998-U
Supel™ Carbon LC column	2.1	15	1 U/HPLC Column	59987-U
Supel™ Carbon LC column	3.0	15	1 U/HPLC Column	59994-U
Supel™ Carbon LC column	2.1	5.0	1 U/HPLC Column	59984-U
Supel™ Carbon LC column	3.0	5.0	1 U/HPLC Column	59991-U
Supel™ Carbon LC column	4.6	5.0	1 U/HPLC Column	59997-U
Supel™ Carbon LC column Guard Cartridge Kit	2.1	2.0	1 Guard Cartridge + 1 Guard Cartridge Holder	59982-U
Supel™ Carbon LC column Guard Cartridge Kit	3.0	2.0	1 Guard Cartridge + 1 Guard Cartridge Holder	59989-U
Supel™ Carbon LC column Guard Cartridge Kit	4.0	2.0	1 Guard Cartridge + 1 Guard Cartridge Holder	59996-U
Supel™ Carbon LC Guard Cartridge	2.1	2.0	3 Guard Cartridges	59981-U
Supel™ Carbon LC Guard Cartridge	3.0	2.0	3 Guard Cartridges	59988-U
Supel™ Carbon LC Guard Cartridge	4.0	2.0	3 Guard Cartridges	59995-U
Guard Cartridge Holder for Supel™ Carbon LC Guard Cartridges	N/A	N/A	1 Guard Cartridge Holder	59999-U



AUTHORIZED DISTRIBUTOR

MZ-Analysentechnik GmbH, Barcelona-Allee 17• D-55129 Mainz
Tel +49 6131 880 96-0, Fax +49 6131 880 96-20
e-mail: info@mz-at.de, www.mz-at.de

Visit: SigmaAldrich.com/carbonLC

To place an order or receive technical assistance

Order/Customer Service: SigmaAldrich.com/order
Technical Service: SigmaAldrich.com/techservice
Safety-related Information: SigmaAldrich.com/safetycenter

SigmaAldrich.com

Merck KGaA
Frankfurter Strasse 250
64293 Darmstadt, Germany

