



DISCOVERY[®]

HPLC and SPE Products for Pharmaceutical Analysis and Purification

INTRODUCING

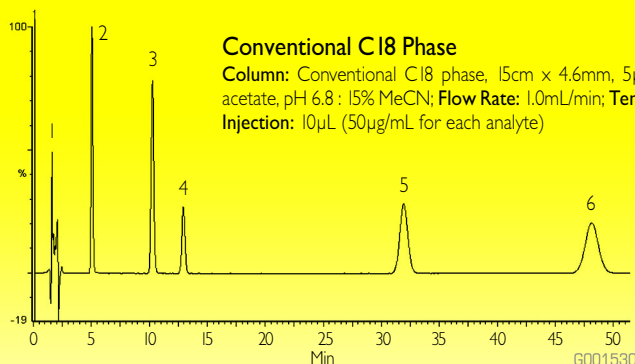
Discovery HS PEG HPLC Columns, 120Å; 3µm, 5µm and 10µm particle sizes available

- A unique polyethylene glycol reversed phase specifically developed for pharmaceutical analysis and purification
- Unique selectivity and faster separations of polar compounds compared to C18 phases
- Outstanding performance for phenolic compounds offers unique retention and selectivity and faster analysis compared to C18
- Scalable from analytical to prep
- Highly stable to ensure excellent run-to-run and lot-to-lot reproducibility and long column life

HERE'S THE
PROOF

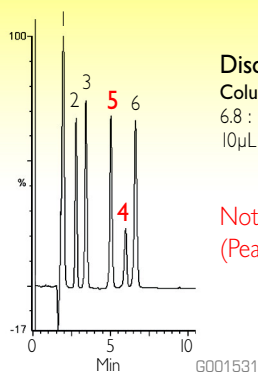
UNIQUE SELECTIVITY AND FASTER SEPARATION OF POLAR COMPOUNDS

Discovery HS PEG delivers unique retention, selectivity and faster separations of polar compounds when compared to C18 phases.



1. Uracil
2. Benzamide
3. Acetanilide
4. Phenol
5. N-Methylaniline
6. Nitrobenzene

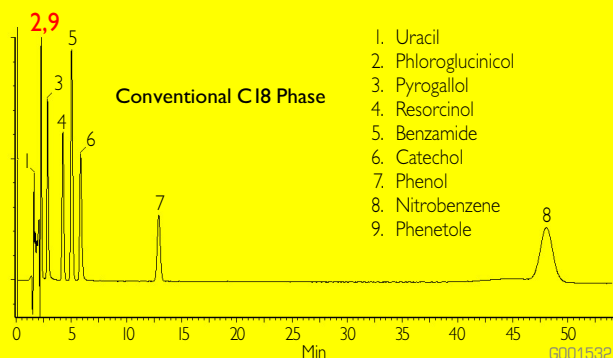
**Shorter
Run
Time!**



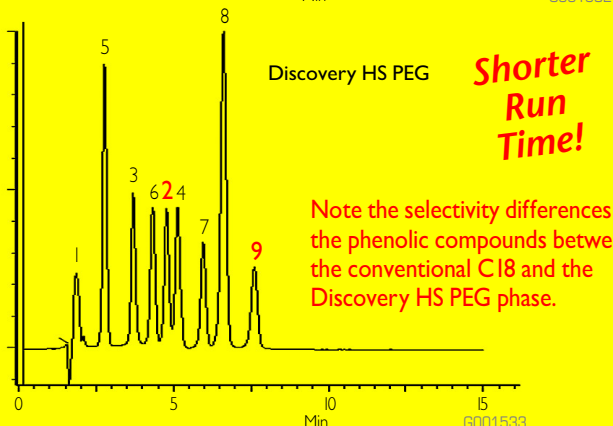
Note that the typical C18 elution order of phenol (peak 4) and N-methylaniline (Peak 5) is reversed on the Discovery HS PEG phase

OUTSTANDING RESOLUTION OF PHENOLIC COMPOUNDS ON DISCOVERY HS PEG

Columns: Conventional C18 phase and Discovery HS PEG, 15cm x 4.6mm, 5µm; Mobile Phase: 85% 10mM ammonium acetate, pH 6.8 : 15% MeCN; Flow Rate: 1.0mL/min; Temp: 20°C; Detection: UV/Photodiode Array; Injection: 10µL (50µg/mL for each analyte)



1. Uracil
2. Phloroglucinol
3. Pyrogallol
4. Resorcinol
5. Benzamide
6. Catechol
7. Phenol
8. Nitrobenzene
9. Phenetole



Shorter Run Time!

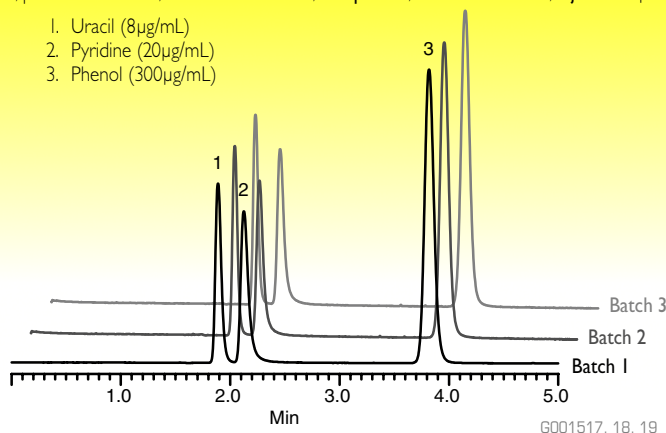
Note the selectivity differences of the phenolic compounds between the conventional C18 and the Discovery HS PEG phase.

Especially note the improved retention of Phloroglucinol (Peak 2) and Phenetole (Peak 9) on the Discovery HS PEG phase.

LOT TO LOT REPRODUCIBILITY OF DISCOVERY HS PEG

Column: Discovery HS PEG, 15cm x 4.6mm, 5µm; Mobile Phase: 45% 10mM potassium phosphate, pH 7 : 55% MeOH; Flow Rate: 1 mL/min; Temp: 35°C; Detection: 254nm; Injection: 5µL

1. Uracil (8µg/mL)
2. Pyridine (20µg/mL)
3. Phenol (300µg/mL)



ORDERING INFORMATION:

3µm Discovery HS PEG HPLC Columns

ID (mm)	Length (cm)	CAT. NO.
2.1	5	567400-U
2.1	10	567402-U
2.1	15	567403-U
4.0	5	567430-U
4.0	10	567431-U
4.0	15	567432-U
4.6	5	567404-U
4.6	10	567406-U
4.6	15	567407-U

5µm Discovery HS PEG HPLC Columns

ID (mm)	Length (cm)	CAT. NO.
2.1	5	567408-U
2.1	10	567410-U
2.1	15	567411-U
2.1	25	567412-U
4.0	5	567433-U
4.0	10	567434-U
4.0	15	567435-U
4.0	25	567436-U
4.6	5	567413-U
4.6	10	567415-U
4.6	15	567416-U
4.6	25	567417-U
10.0	5	567418-U
10.0	10	567437-U
10.0	15	567419-U
10.0	25	567420-U
21.2	5	567421-U
21.2	10	567439-U
21.2	15	567422-U
21.2	25	567423-U

10µm Discovery HS PEG HPLC Columns

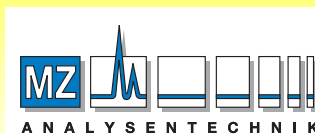
ID (mm)	Length (cm)	CAT. NO.
10.0	5	567424-U
10.0	10	567438-U
10.0	15	567425-U
10.0	25	567426-U
21.2	5	567427-U
21.2	10	567440-U
21.2	15	567428-U
21.2	25	567429-U

2cm Supelguard Cartridges with Discovery HS PEG Packings

Particle Size/ID	3µm	5µm
2.1mm		
2 Pack	567470-U	567474-U
Kit	567471-U	567475-U
4.0mm		
2 Pack	567472-U	567476-U
Kit	567473-U	567477-U

1cm Supelguard Cartridges with Discovery HS PEG Packings

Particle Size/ID	5µm	10µm
10mm	567478-U	567480-U



A N A L Y S E N T E C H N I K

AUTHORIZED DISTRIBUTOR

MZ-Analysentechnik GmbH
Barcelona-Allee 17 • D-55129 Mainz
Tel +49 6131 880 96-0
Fax +49 6131 880 96-20
e-mail: info@mz-at.de
www.mz-at.de

TRADEMARKS

Discovery and Supelguard are trademarks of Sigma-Aldrich Co.

sigma-aldrich.com/supelco

Order/ Customer Service 800-247-6628, 800-325-3010 • Fax 800-325-5052 • E-mail supelco@sial.com
Technical Service 800-359-3041, 814-359-3041 • Fax 800-359-3044, 814-359-5468 • E-mail techservice@sial.com
SUPELCO • Supelco Park, Bellefonte, PA 16823-0048 • 814-359-3441



We are committed to the success of our Customers, Employees and Shareholders through leadership in Life Science, High Technology and Service.

The SIGMA-ALDRICH Family



SIGMA



ALDRICH



Fluka



Riedel-deHaen

SUPELCO

© 2001 Sigma-Aldrich Co. Printed in USA. Supelco brand products are sold through Sigma-Aldrich, Inc. Sigma-Aldrich, Inc. warrants that its products conform to the information contained in this and other Sigma-Aldrich publications. Purchaser must determine the suitability of the product(s) for their particular use. Additional terms and conditions may apply. Please see reverse side of the invoice or packing slip.



T401100A
EHZ