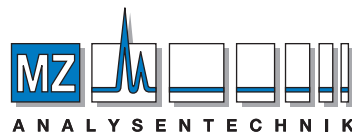
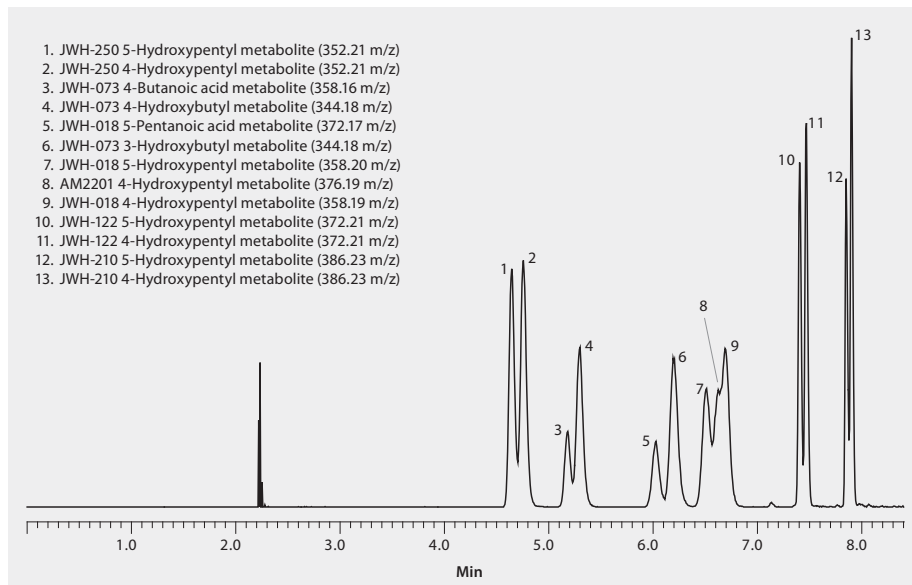


## UHPLC-MS Analysis of Spice Cannabinoid Metabolites from Urine Using Titan™ C18

|                       |  |
|-----------------------|--|
| sample preparation    | SPE (Solid Phase Extraction)   |
| SPE well plate        | SupelSelect HLB 96-Well Plate, 60mg/well (575662-U)  |
| condition             | 1 mL methanol, then 1 mL water   |
| sample addition       | 100 ng/mL in matrix  |
| drying                | none   |
| washing               | 1 mL 20% methanol in water   |
| elution               | 2 mL methanol  |
| eluate post-treatment | none   |
| column                | Titan C18 10 cm x 2.1 mm, 1.9 µm particles (577124-U)  |
| mobile phase          | (A) 0.1% formic acid in 95:5, water:acetonitrile;<br>(B) 0.1% formic acid in 5:95, water:acetonitrile;             |
| gradient              | 25% B held for 1 min; to 45% B in 0.5 min;<br>45% B held for 4.5 min; to 80% B in 0.5 min;<br>80% B held for 4 min |
| flow rate             | 0.5 mL/min   |
| pressure              | 8756 psi (604 bar)   |
| temp.                 | 35 °C  |
| detector              | MS-ESI+, 100 – 1000 m/z scan, XIC  |
| injection             | 2.0 µL   |
| sample                | 100 ng/mL in methanol  |
| Application No.       | G006307  |



### AUTHORIZED DISTRIBUTOR

MZ-Analysentechnik GmbH, Barcelona-Allee 17• D-55129 Mainz  
Tel +49 6131 880 96-0, Fax +49 6131 880 96-20  
e-mail: [info@mz-at.de](mailto:info@mz-at.de), [www.mz-at.de](http://www.mz-at.de)