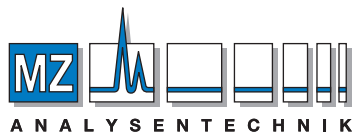
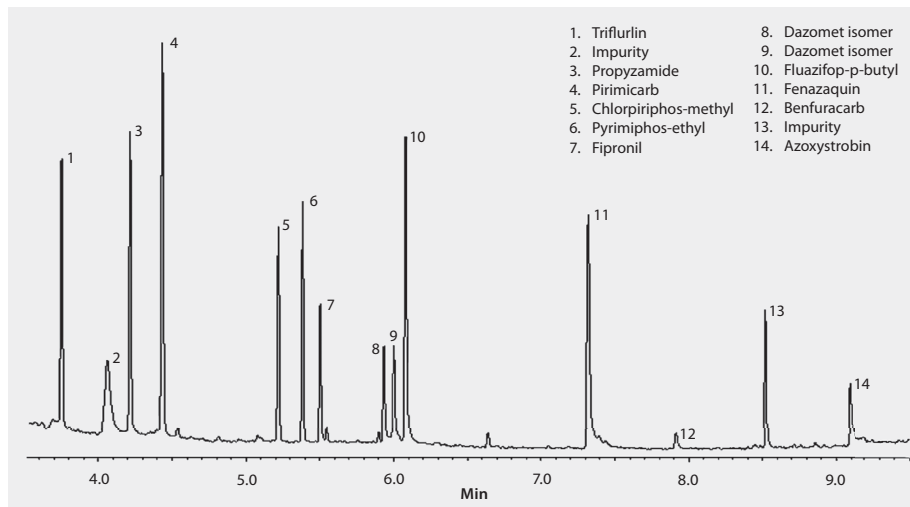


GC Analysis of a 12-Component Pesticide Mix on SLB[®]-5ms (10 m x 0.10 mm I.D., 0.10 μ m), Fast GC Analysis

column SLB-5ms, 10 m x 0.10 mm I.D., 0.10 μ m (28465-U)
oven 40 $^{\circ}$ C (1 min), 80 $^{\circ}$ C/min to 160 $^{\circ}$ C, 5 $^{\circ}$ C/min to 340 $^{\circ}$ C (2 min)
inj. temp. 280 $^{\circ}$ C
MSD interface 280 $^{\circ}$ C
scan range 45-470 m/z
carrier gas helium, 0.52 mL/min
injection 0.5 μ L 10:1 split
sample . . . 12-component pesticide mix, each analyte at 0.8-2.0 μ g/mL in hexane:
acetone (50:50)
Application No. **G003916**



AUTHORIZED DISTRIBUTOR

MZ-Analysentechnik GmbH, Barcelona-Allee 17 • D-55129 Mainz

Tel +49 6131 880 96-0, Fax +49 6131 880 96-20

e-mail: info@mz-at.de, www.mz-at.de